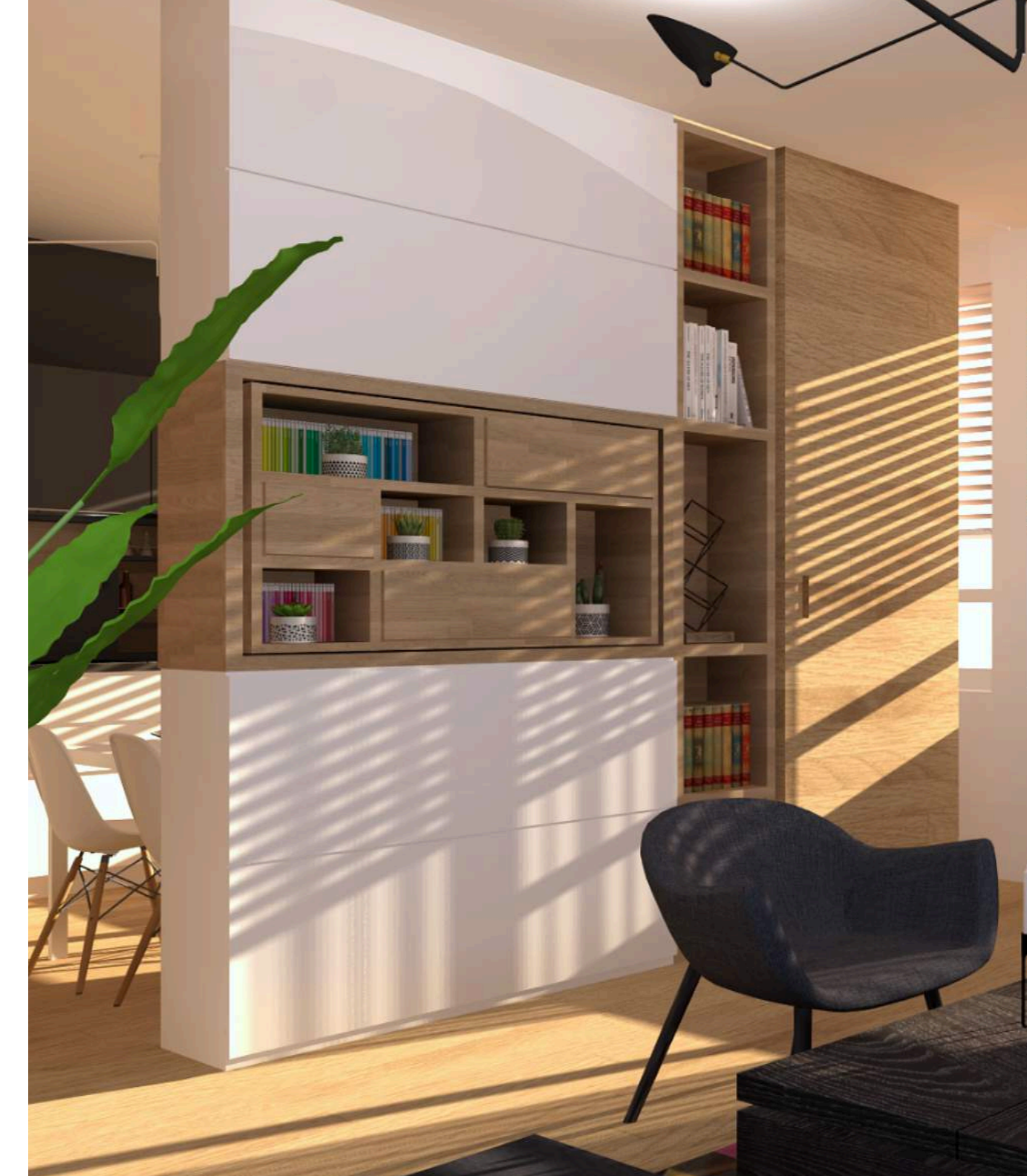




ACME D3
Interior, Spatial & Furniture Design

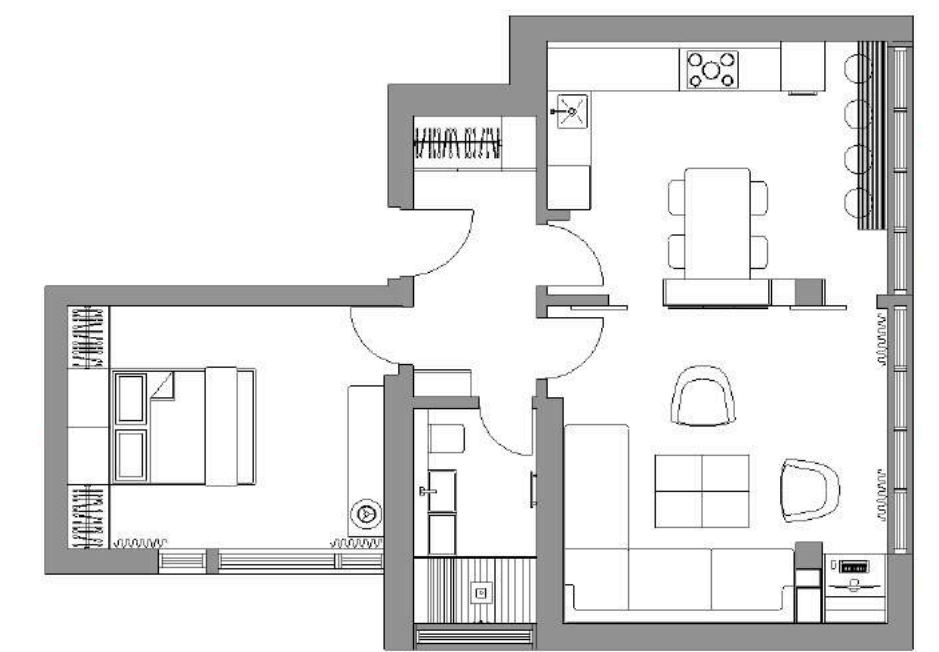
Modern Apartment Interior Design



One bedroom, 64sqm apartment in a dire state required stripping to the bare bones in order to repair several decades of neglect. Total renovation also provided an opportunity to compose a space unique to our client, a single professional based in Sarajevo.

In this case form truly followed function - almost every single piece of furniture and fittings was custom designed and hand built. This extended to specially commissioned paintings by artist Faris Hadzic for the living room wall - abstract, daring and vibrant, they animate an otherwise minimal interior.

Simple shapes, clean lines and warm materials helped with creation of a relaxed, comfortable and understatedly stylish space with some bold and colourful surprises.



Modern Apartment Interior Design

Complete renovations are usually a costly endeavour and it was our client's intention to examine and evaluate all the options prior to commencement of the required work.

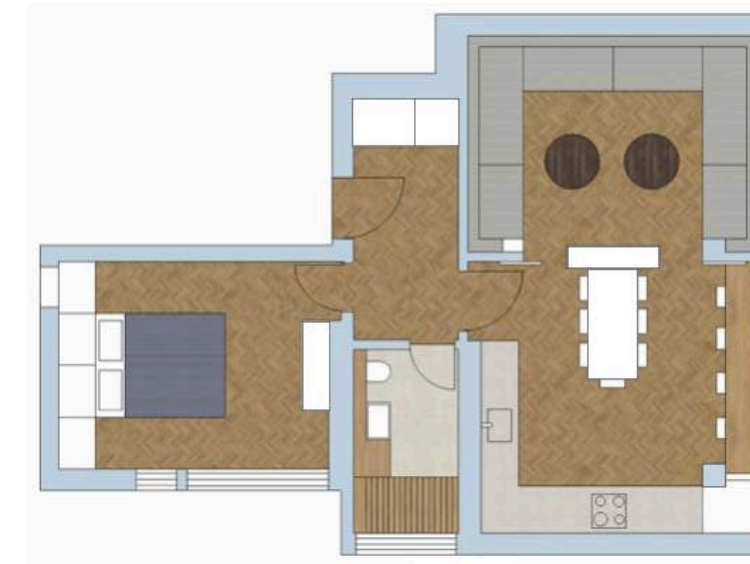
In consultations with his engineer it was decided that walls separating kitchen / dining area and bedroom / living room can be opened or removed but only if there was a valid reason to do so.

The main concerns were the placement of kitchen/ dining area and structural columns present in two front rooms.

We started with three different layouts and after careful consideration it was decided that layout 3, with some corrections and fine tuning, is the most suitable one.



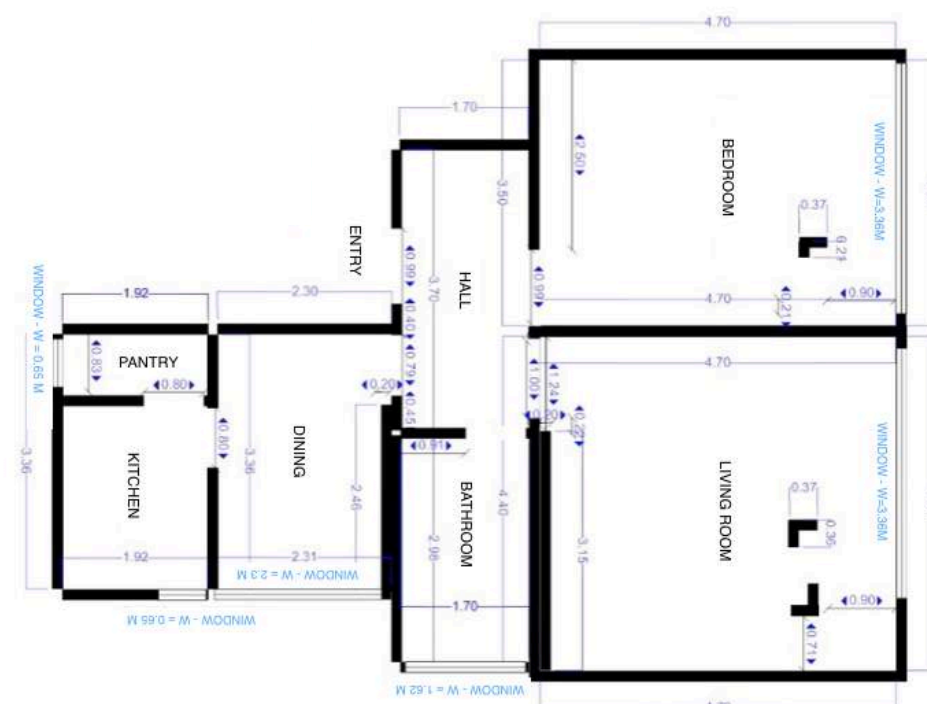
LAYOUT 1 - simplest option as the layout remains almost unchanged apart from the kitchen/dining becoming open plan



LAYOUT 2 - almost all functions are swapped - living room is essentially a huge wrap around sofa connected with sizeable kitchen/dining room



LAYOUT 3 - bedroom and kitchen swapped places, bed placement allows the storage to function at its full capacity.



EXISTING PLAN SUPPLIED BY CLIENT

FINAL LAYOUT - Each option contributed to the creation of the final layout: bedroom and kitchen/diner swapped places like in option three, bedroom and bathroom are set as in option two. Column positions were corrected and space around used for a computer niche in the living room.





Living Room Design Brief

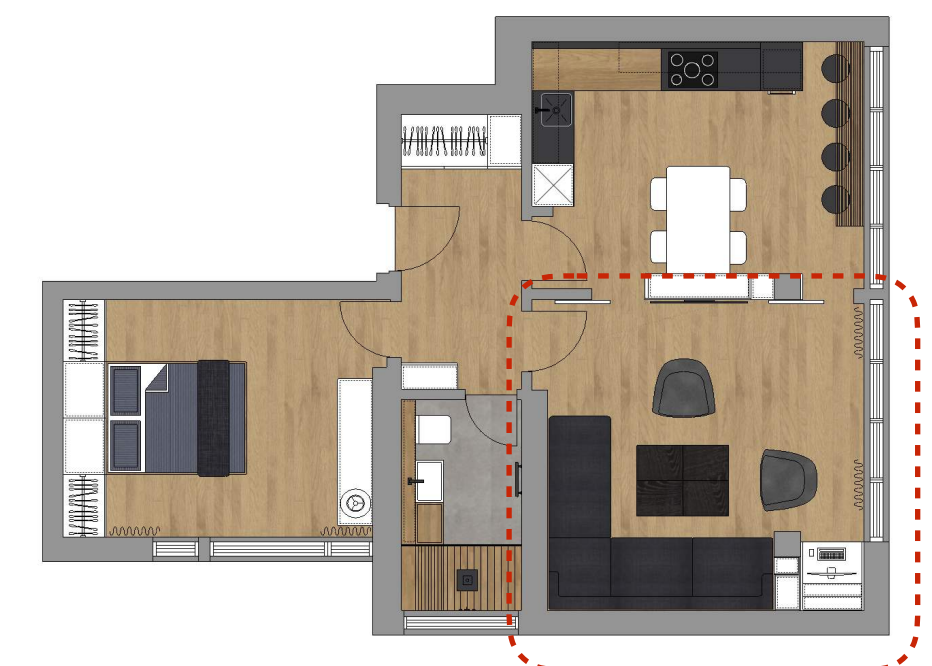
Despite open plan attractiveness, such layout also presents its own set of problems like noise, cooking aromas, mess, etc., so a possibility of total separation was the main request by our client:

- Living room requirements are quite simple: large and comfy sofa, coffee table and a big TV
- The idea of living room and kitchen being connected seems attractive but with a possibility of total separation as kitchen activities tend to be noisy and, if exposed, require constant cleaning
- Utilize space around structural column

Part of the wall that separated living and newly positioned kitchen/dining room is replaced by a floor to ceiling media and storage unit with a revolving TV /shelving cabinet which, depending on occasion, can be suitably orientated. Bridging the distance to the second structural column is floor to ceiling bookshelf. With additional sliding doors on both sides of media cabinet, living room level of openness and connection to kitchen/diner can be easily controlled.

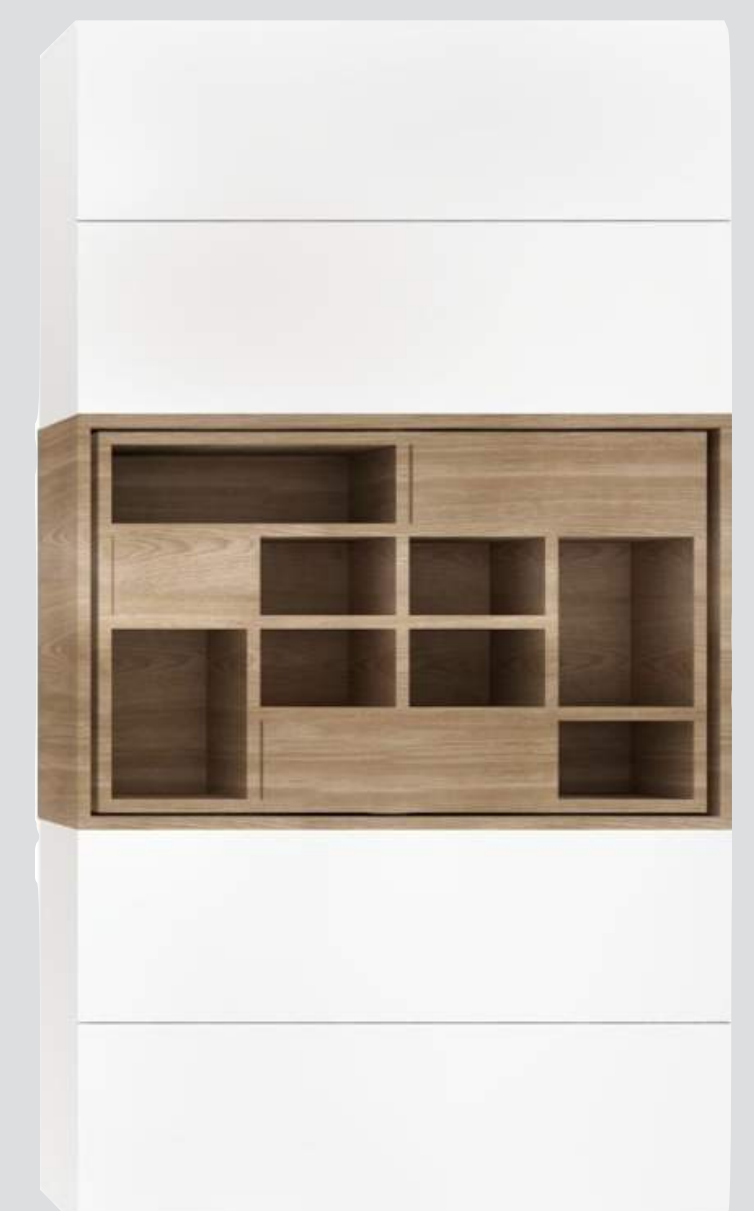
When faced with a problem like a prominently spaced structural column it is wise to work with it and not against it.

In this case the entry facing side is used for enclosed shallow cabinets and a wood veneered lamp alcove (light sources surrounded by wood produce amazingly warm glow), whilst the other side got a role of a computer/study nook.



Bespoke Living Room Furniture

No 1 - Rotating TV Cabinet



Custom designed media cabinet is constructed out of three interconnected parts.

Bottom unit, with depth reduced uprights for cables passage, hides all the media equipment. In these cases IP Repeating Kit is usually necessary for remote controllers to function with closed cabinet doors.

Middle unit can be rotated and consists of shelves on one side and TV on the other, depending on what kind of display is required in either living room or kitchen/dining area.

Top unit is an additional storage space where shelving can be arranged as needed.

Bespoke Living Room Furniture

Wall Composition



Floor to ceiling rotating media and storage cabinet, bookshelf and two sliding doors allow users to create a variety of compositions affecting the look, levels of openness and flow of space in both living and kitchen/dining room.

Bespoke Living Room Furniture

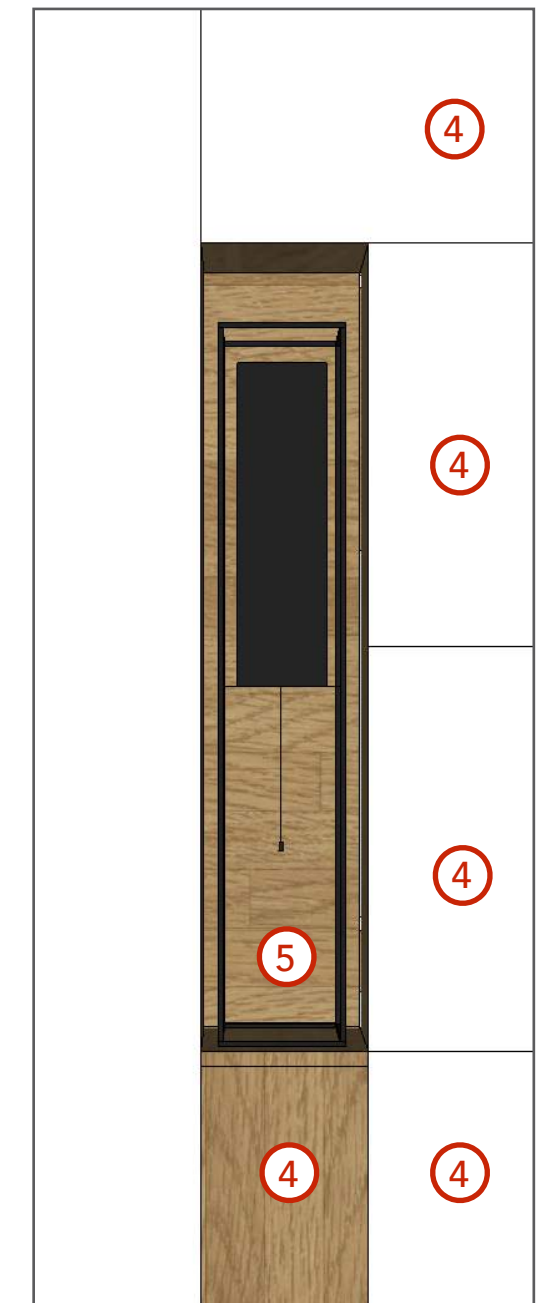
No 2 - Study/Computer Niche



A practical solution for under-utilised space around the structural column: tucked away computer desk with pull-out keyboard and wooden light alcove.



- 1 - AIR-CON UNIT
- 2 - PULL-OUT KEYBOARD TRAY
- 3 - PULL-OUT DRAWERS FOR DESK EQUIPMENT (PRINTER, PAPERS, ETC.)



- 4 - ENCLOSED STORAGE
- 5 - NICHE: CAN BE USED FOR SHELVES OR LIGHTING

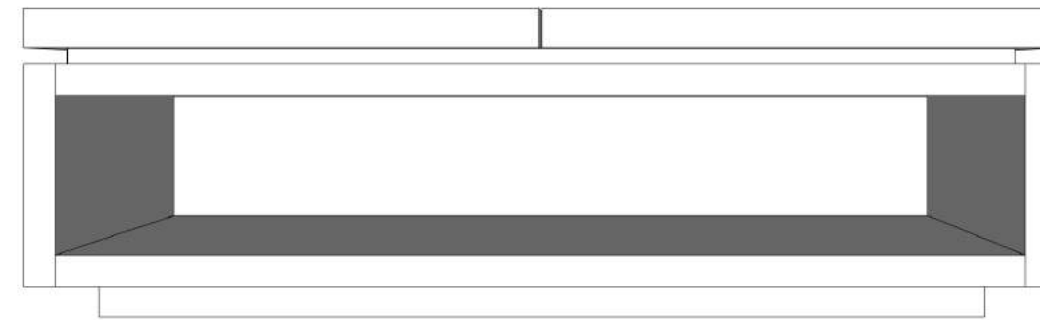
Bespoke Living Room Furniture

No 3 - Coffee Table

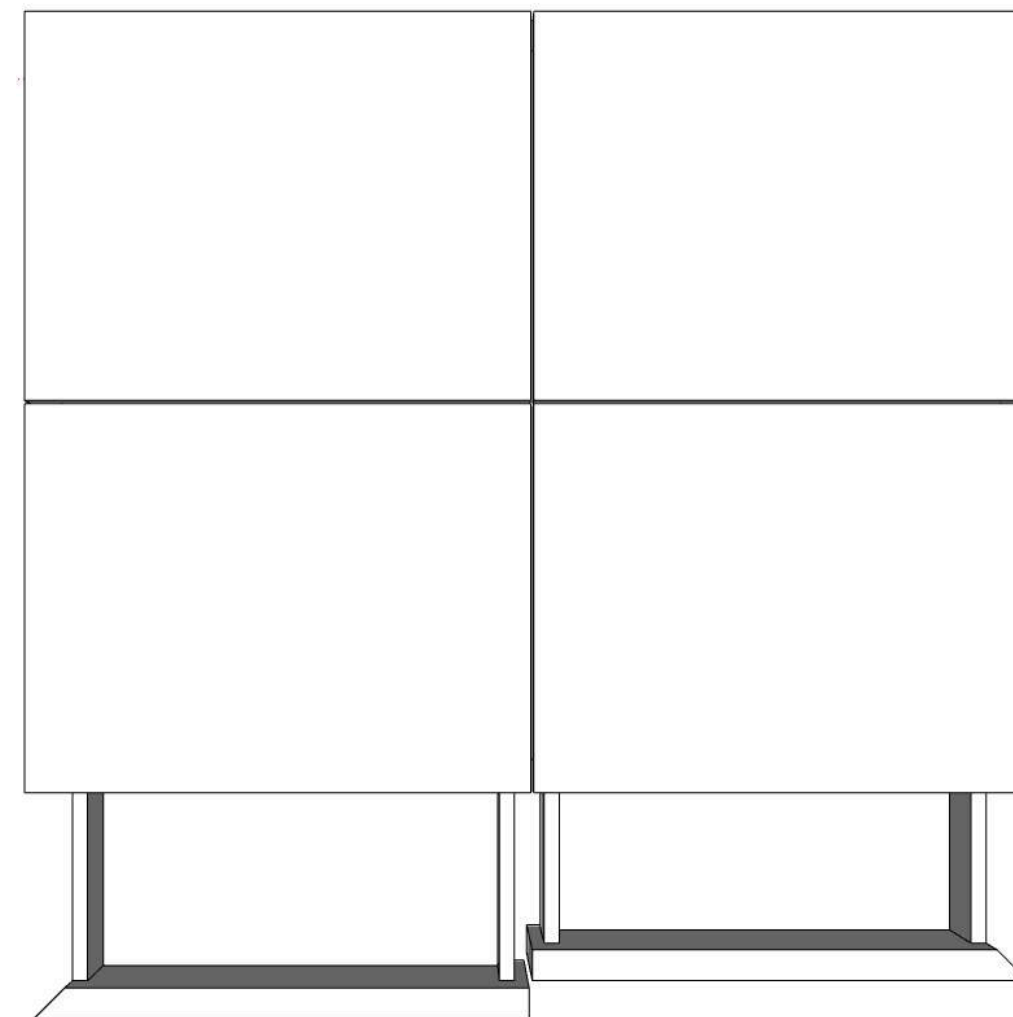


Segmented coffee table in dark wood contains front drawers and open back storage, making it a practical and elegant solution.

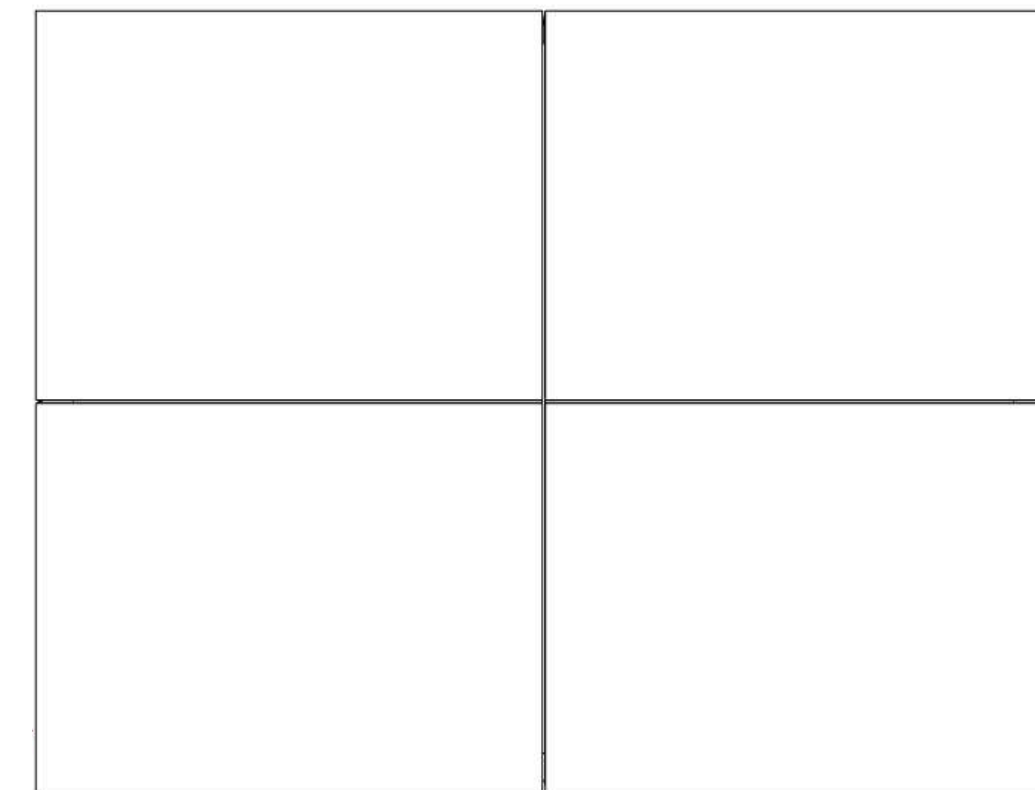
BACK



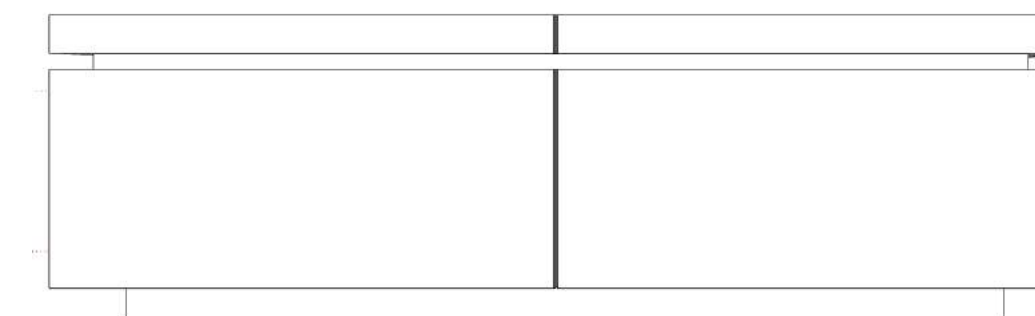
TOP VIEW - OPEN DRAWERS



TOP VIEW



FRONT - DRAWERS







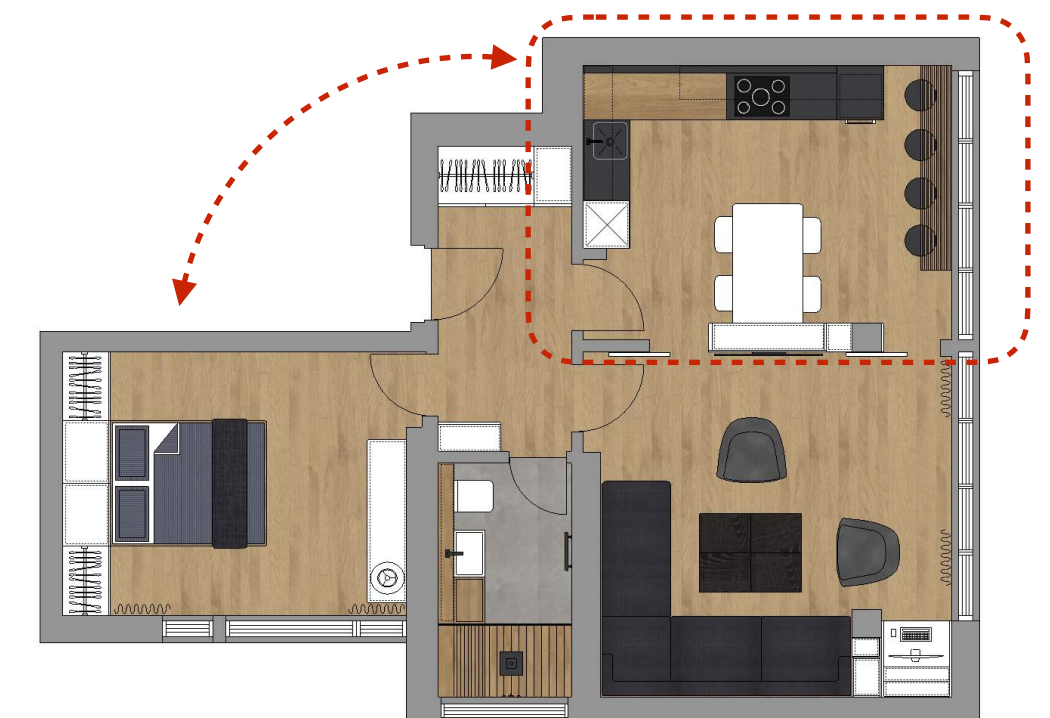




Kitchen & Dining Room Design Brief

'Existing kitchen appears like an afterthought and is incredibly small. I do like the idea of a kitchen as a separate space despite open plan being very popular - it is often too noisy and has to be kept clean all the time to look presentable. One of the ideas is to swap kitchen / dining room with bedroom.'

Kitchen and bedroom swapped their originally designated placements and brought the space plan into the 21st Century. Minimalist cabinetry and neutral colour palette, Poliform collection of kitchens that include a clever and practical shallow shelving grid in place of a backsplash, giving inhabitants an opportunity to add their own decorative stamp. Extendable 8-seat dining table also serves as an additional working space, especially when following a recipe from a TV screen. Black wall hung cabinets are arranged in a single row and can be added to (Tetris style) if the need arises. Just below the window is wooden slats bar table and chairs - ideal for breakfasts and contemplative coffee breaks.





Every elevation in the kitchen/dining area is completely different in appearance and function. What connects them and makes them whole is a neutral and natural palette of colours and materials.



18:30

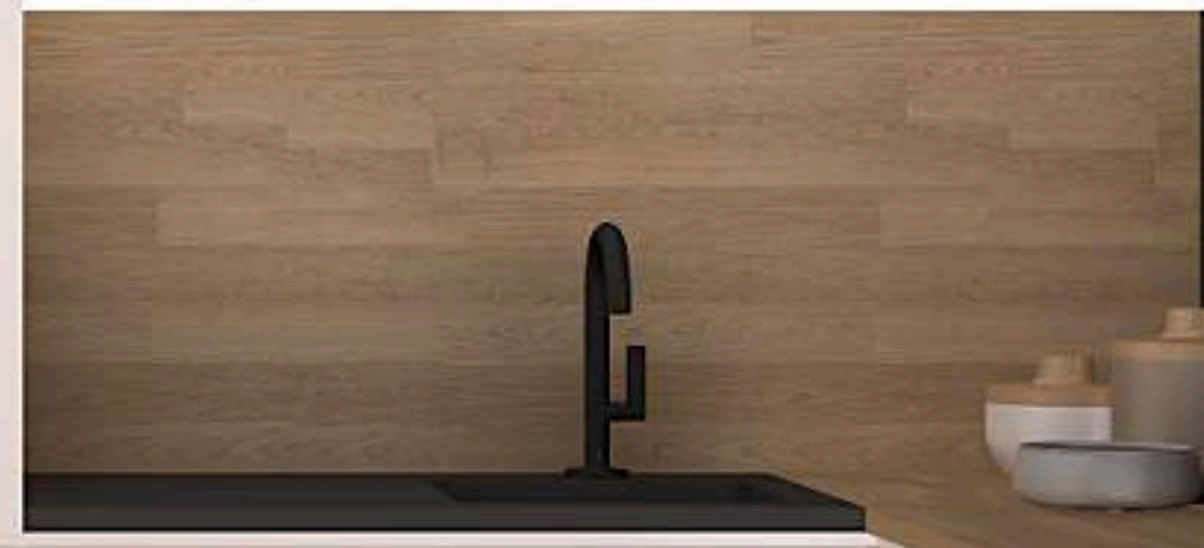
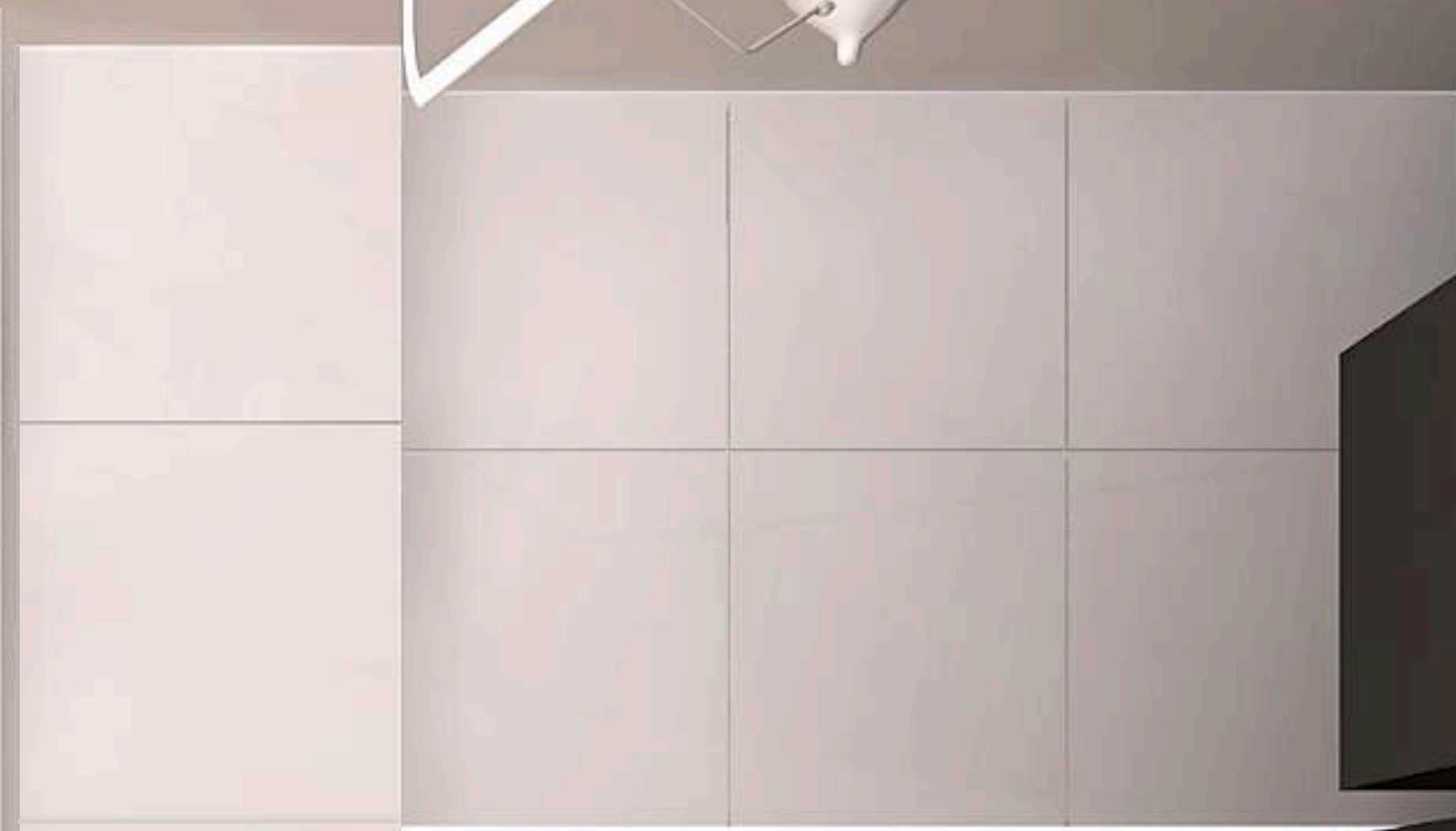
FUNCTION

180

TEMPERATURE



Fisher & Paykel





TO DO

- _____
- _____
- _____
- _____

TO BUY

- _____
- _____
- _____
- _____



TO DO

TO BUY

TO DO

TO BUY

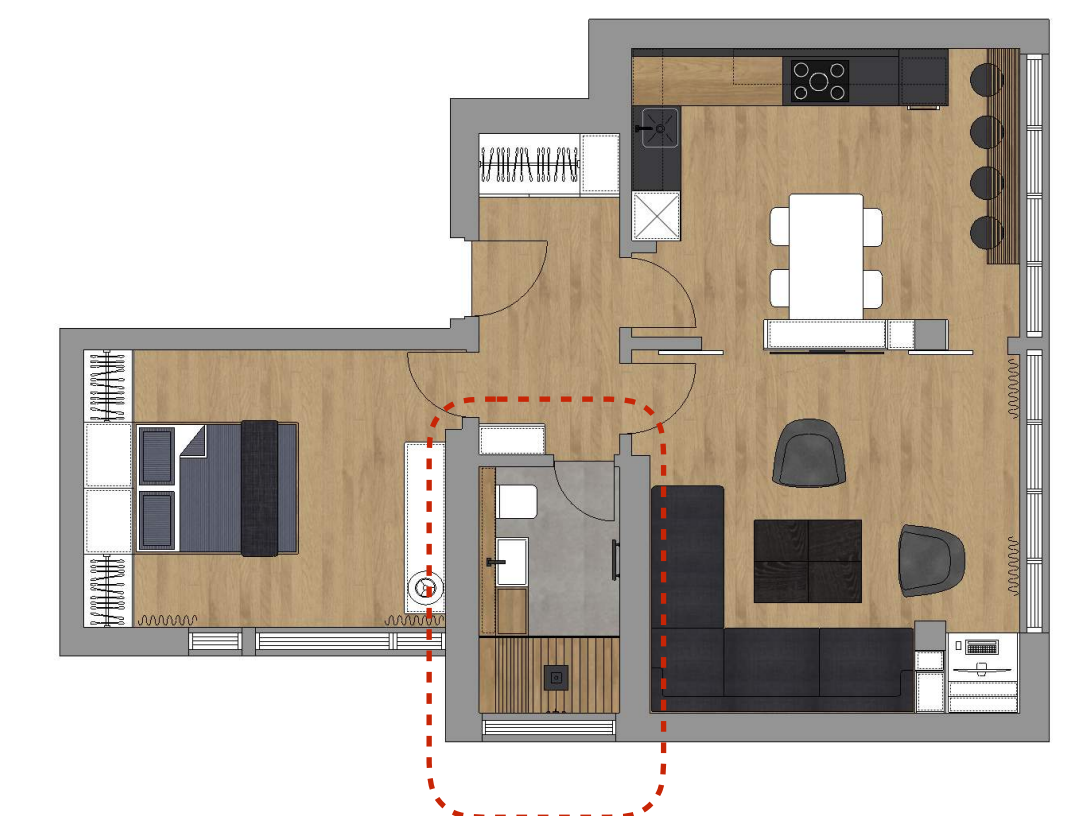




Spa Bathroom Design Brief

Regarding bathroom design our client was straightforward:

'No bathtub, I would prefer a walk-in shower. You will notice on images I supplied that I really like wood surfaces in bathrooms.'

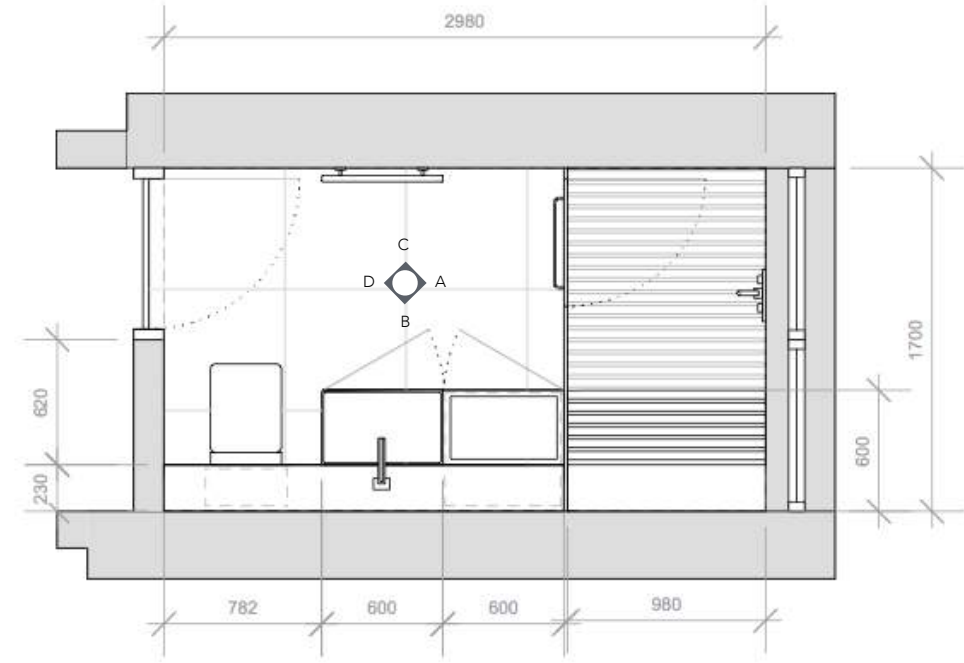


Bathroom was designed with a spa in mind. Despite its muted palette of warm woods and concrete tiles it feels indulgent and understatedly luxurious. Teak is the ideal choice of timber for such installations as it allows wood surfaces to be extended to wet areas like showers.

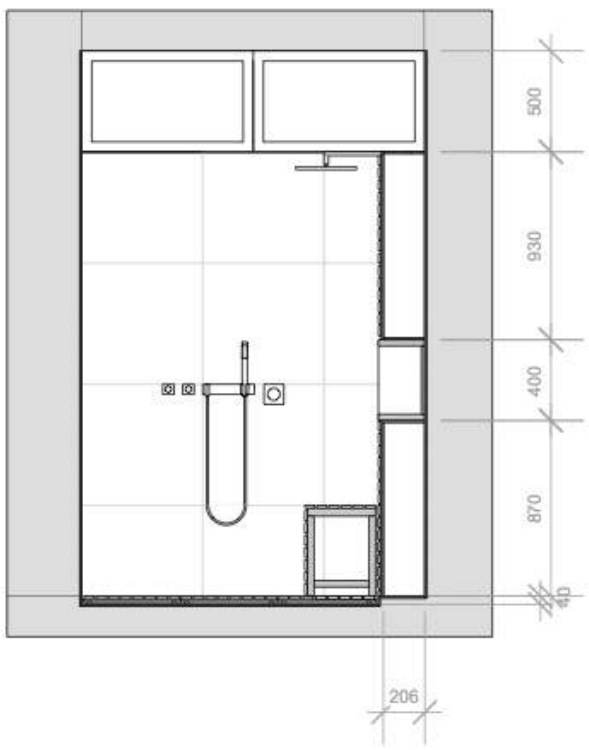
Mirrored wall cabinets provide storage for a slim boiler, bathroom necessities and also visually enlarge the space.

Floor bathroom cabinets contain an integrated washing machine and under-sink storage.

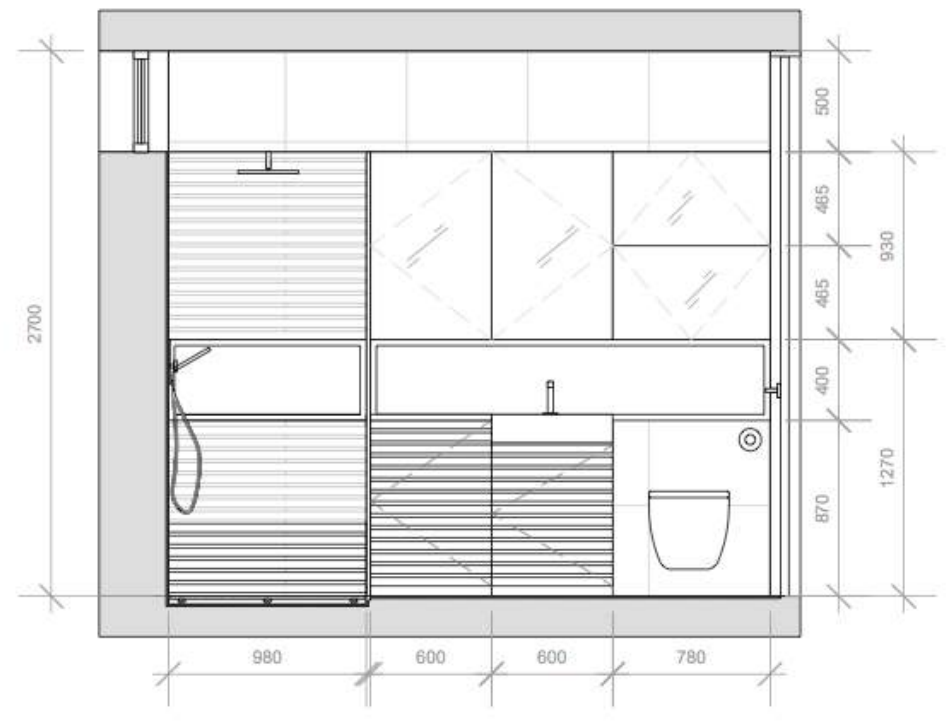
Shower area is reminiscent of steam rooms and has a bench for moments of total relaxation.



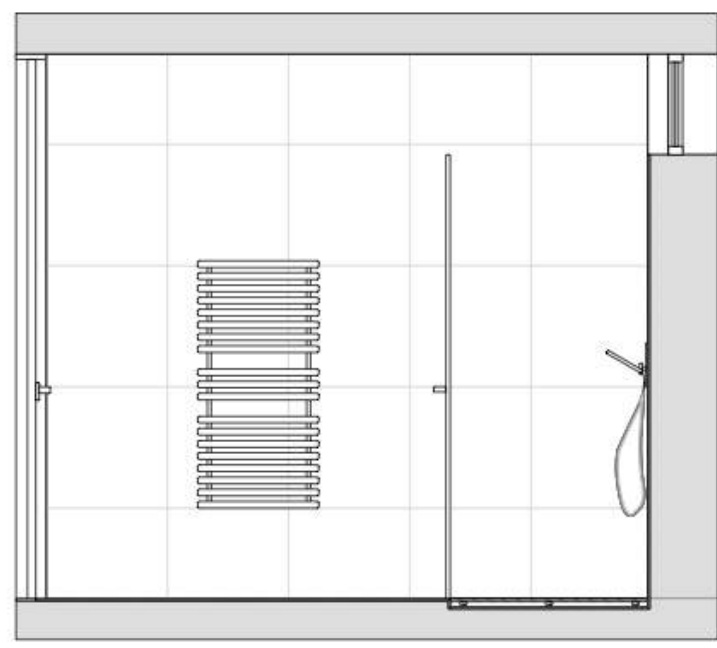
BATHROOM PLAN - SCALE 1:100



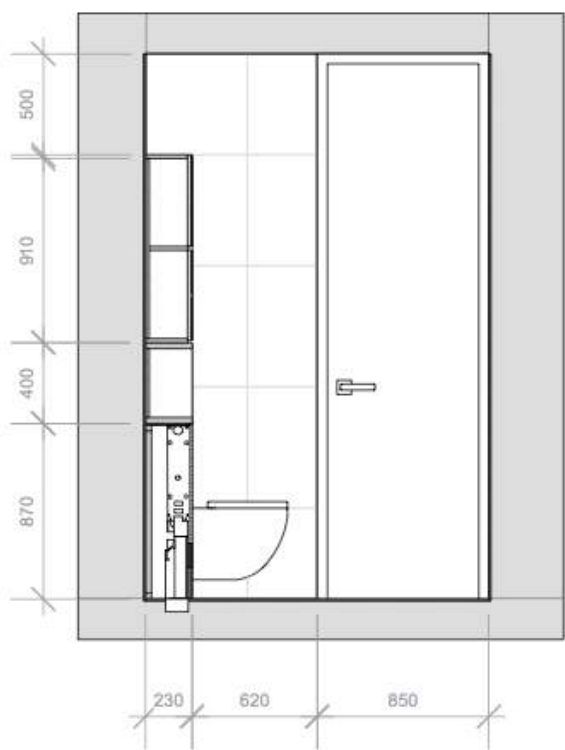
ELEVATION A - SCALE 1:100



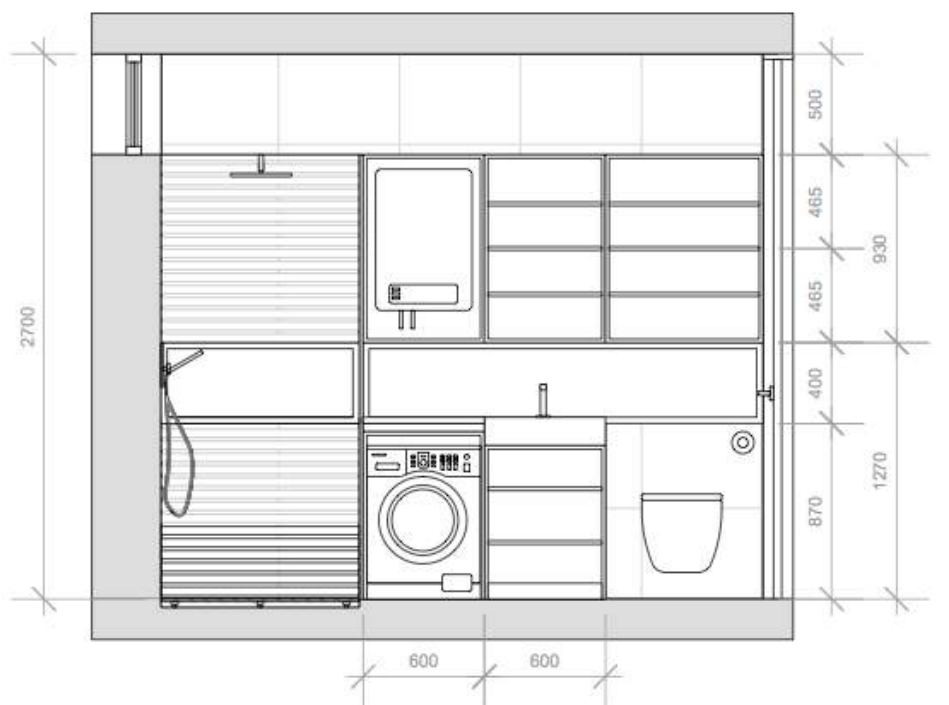
ELEVATION B - SCALE 1:100



ELEVATION C - SCALE 1:100



ELEVATION D - SCALE 1:100



CABINETS INTERIOR - SCALE 1:100

NOTES

PROJECT
APARTMENT RENOVATION - SA

CLIENT
F.H.

SHEET TITLE
BATHROOM

SCALE
1:100

STATUS
CONSTRUCTION

DRAWING NO
002

DATE
09/2017

DESIGN BY



ACME D3
Interior, Spatial & Furniture Design



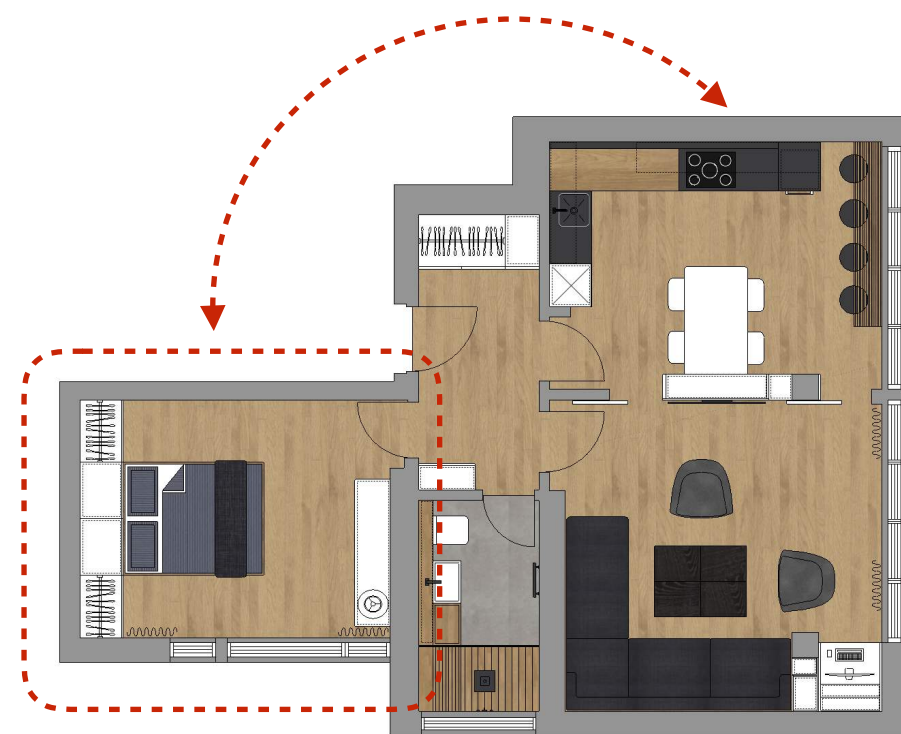




Bedroom Design Brief

Bedroom design brief was quite straightforward in terms of requirements: large bed and a lot of storage.

Slightly more complex was the idea to swap bedroom and kitchen but it transformed a slightly dated plan into a contemporary one.



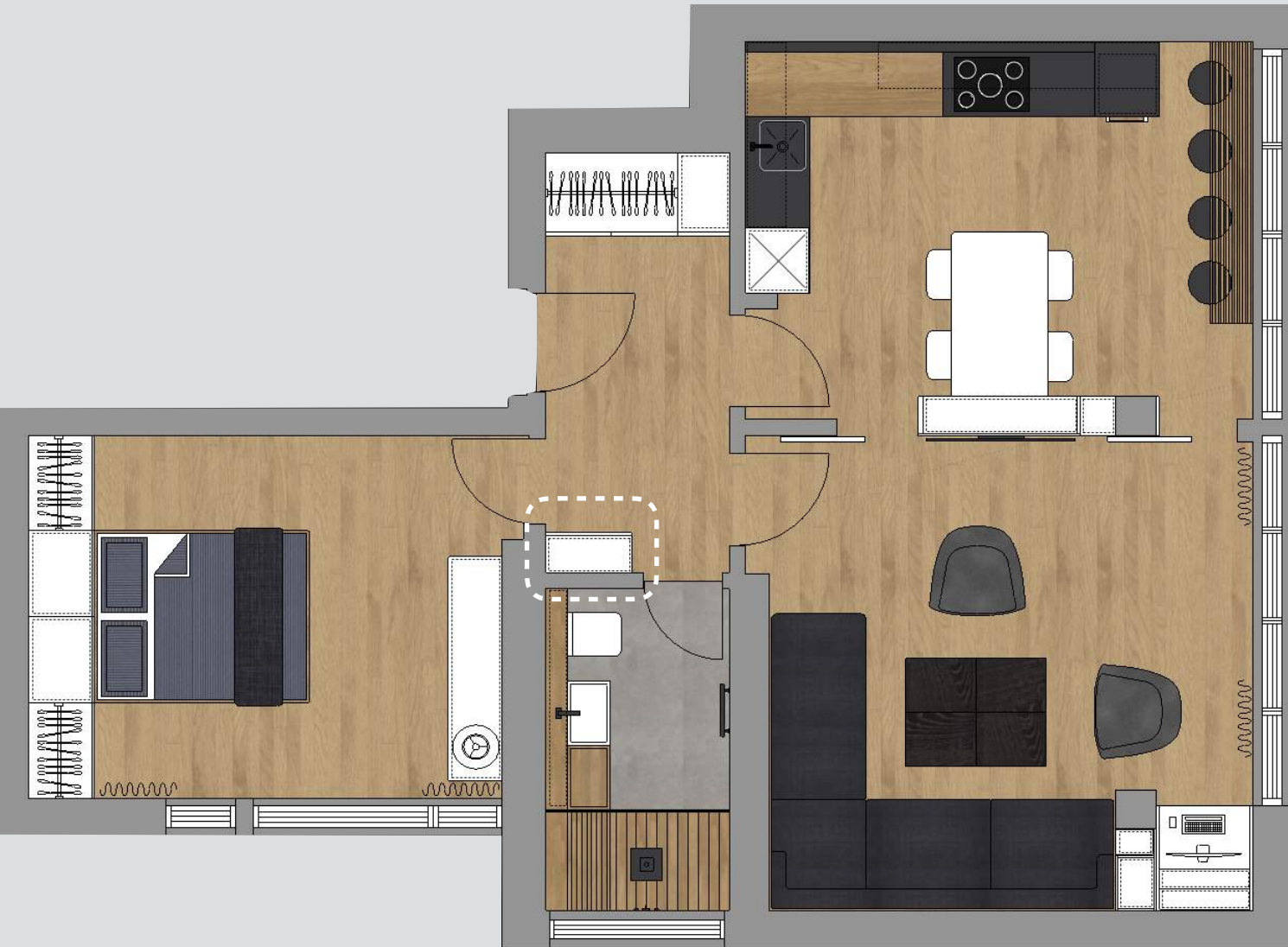
Original dining room / kitchen (shown on photo) swapped places with bedroom. Although the bed placement reduces the storage use and capacity, our client found this position the most suitable. Wardrobe is a simple grid of cabinets with an alcove above the bed replacing bedside tables. Floating sideboard provides additional storage. Large format art on the wall, a living plant and decorative objects bring character to the otherwise simple and functional room.





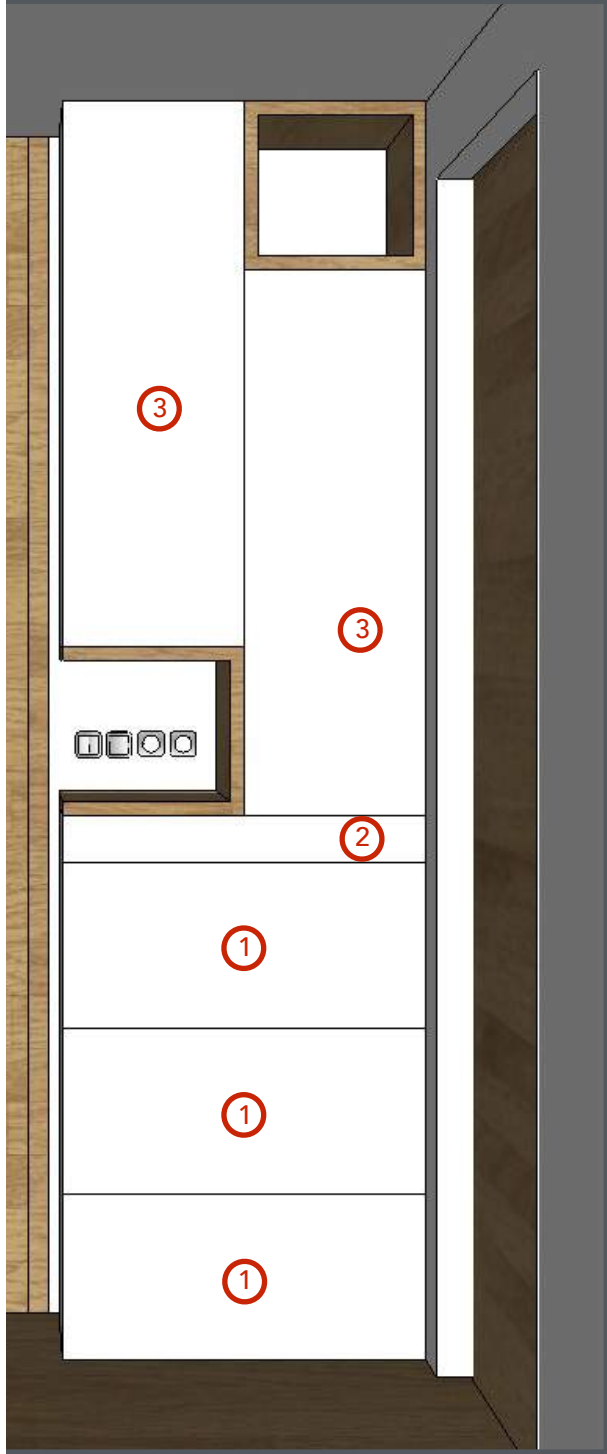
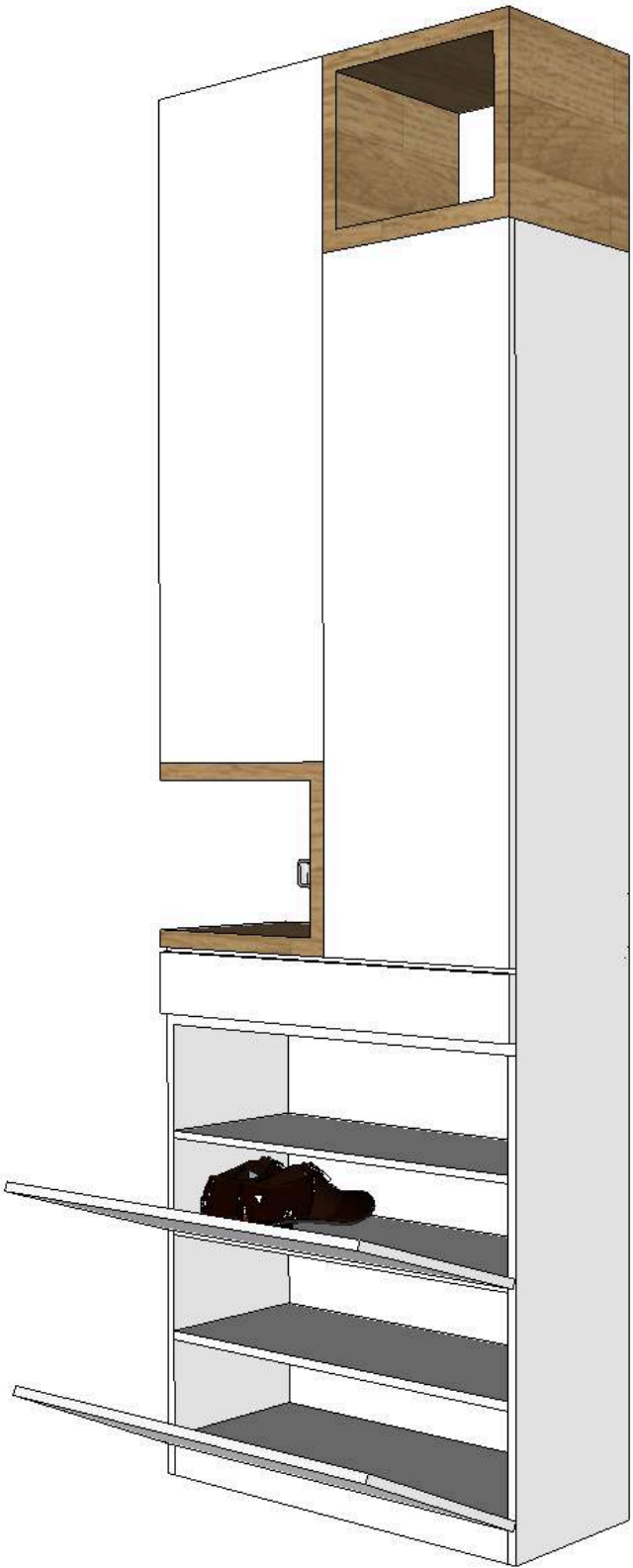
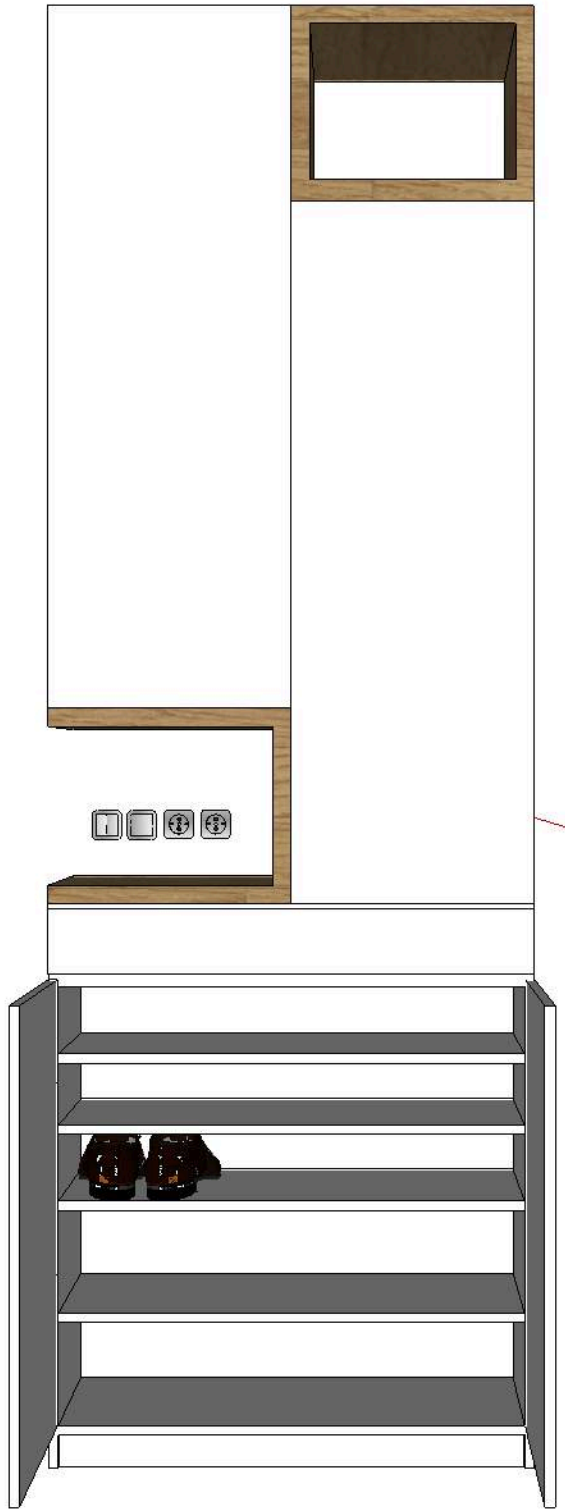
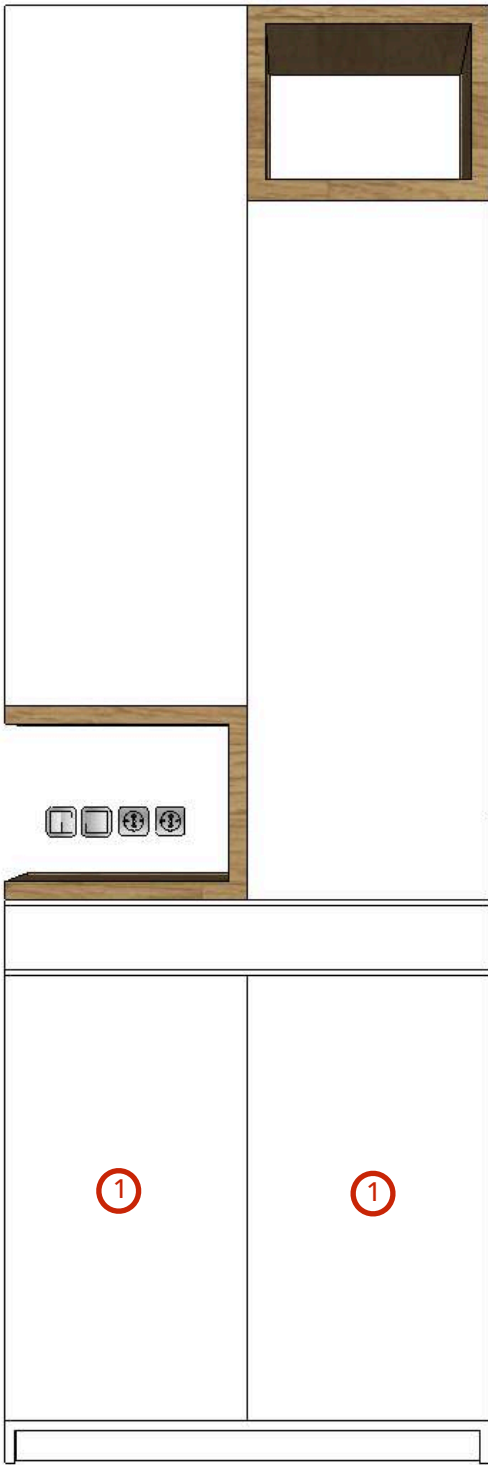
Bespoke Hallway Furniture

No 2 - Shallow Storage



Unused corner stationed between the bathroom and newly appointed bedroom is an ideal place for shallow and practical floor to ceiling storage which can serve the needs of all three rooms surrounding it.

- 1 - SHOES STORAGE
- 2 - DRAWER
- 3 - SHALLOW CABINETS



CLIENT'S PHOTOS



