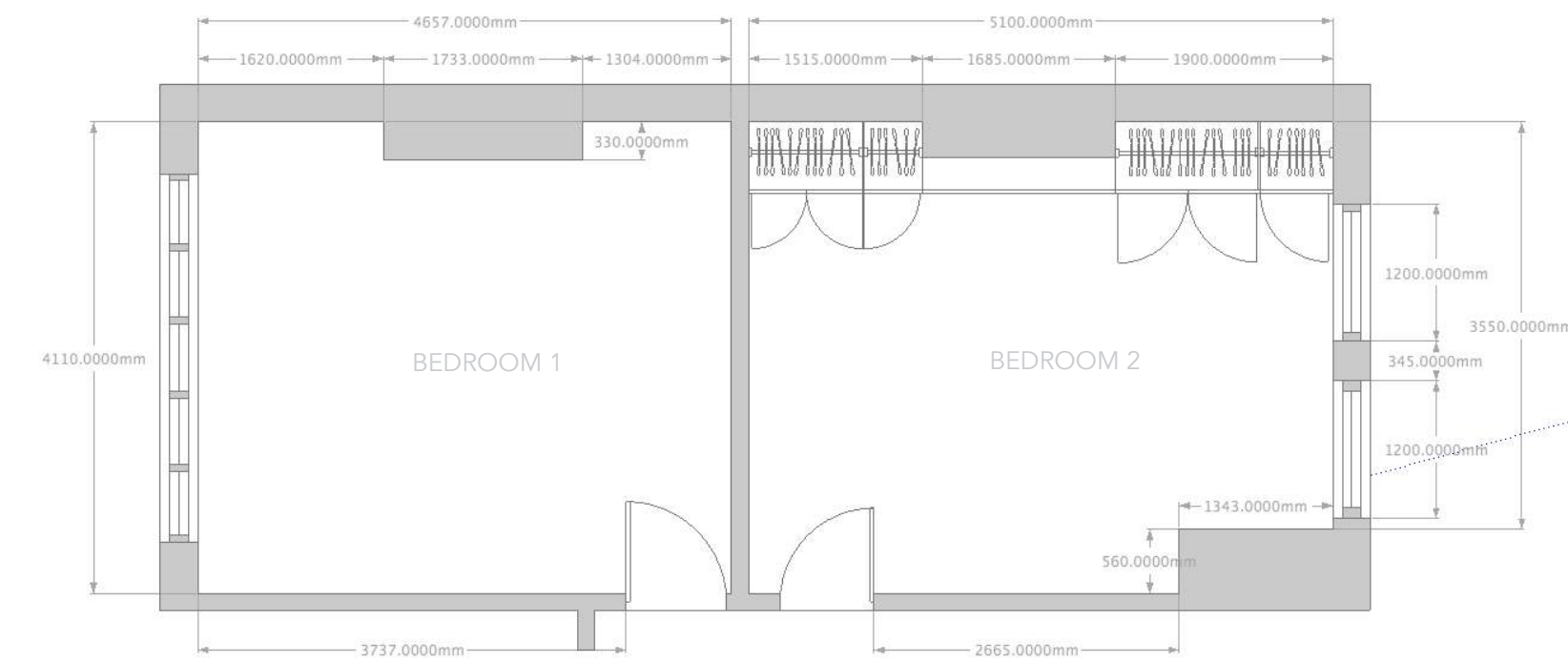




ACME D3  
Interior, Spatial & Furniture Design

## Kids' Bedrooms Two Sisters



EXISTING PLAN

When designing for children all the constraints that generally guide designs for grown up spaces often disappear. In most cases, and rightly so, children are consulted about their needs, desires, themes, favourite colours and consequent results can range from inspiring and creative to over-stimulating and headache inducing spaces. As children grow and develop, these changes should be reflected in their immediate surroundings. It is wise to create timeless and inspiring spaces that serve as a safe retreat and can be easily adapted whilst retaining the character of their inhabitants. In this case we are designing for a teenager and her younger, but determined to keep up, sister who are upgrading from shared room and bunk beds to spaces of their own.



## Girls' Bedrooms Brief

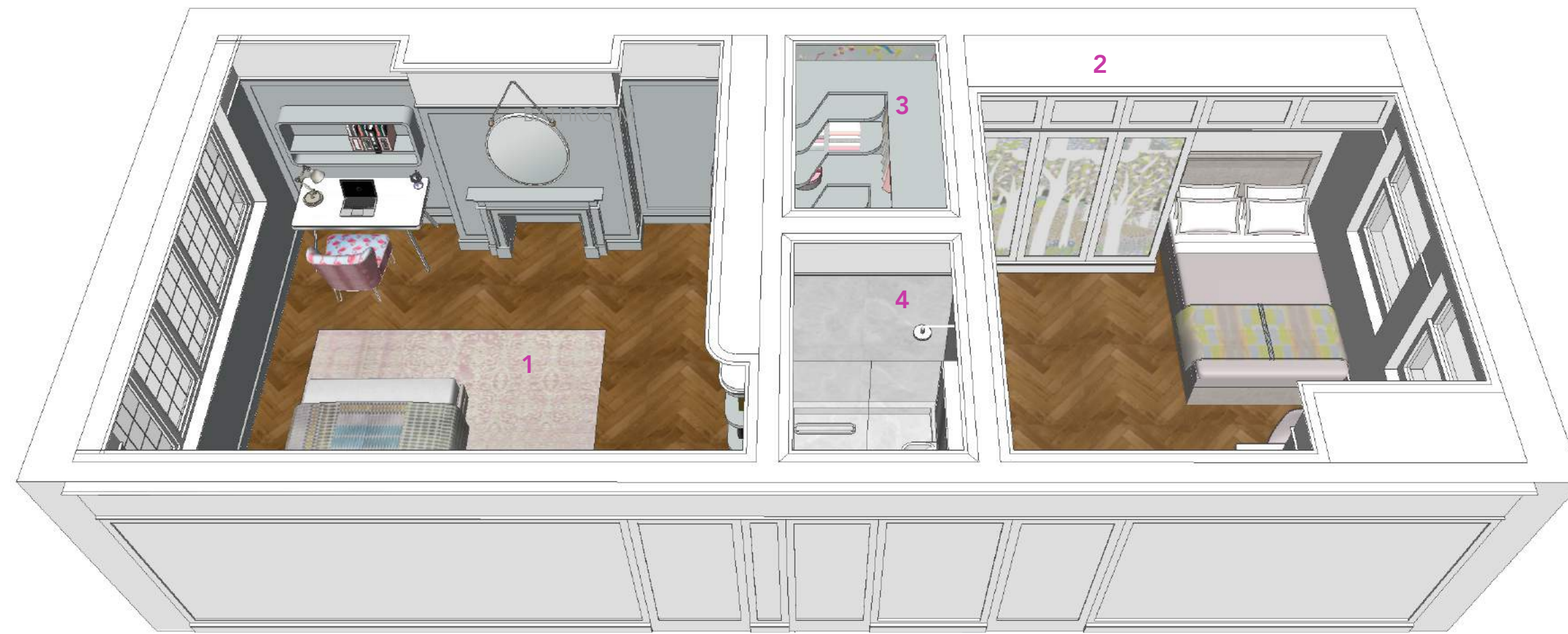
When room migrations happen in large households it is always a good idea to keep in mind that they might happen again sometimes in the future. Here we have a case of two sisters who are getting their own quarters after sharing them with other siblings:

*"Two girls, one early teen cello player with an ever-growing book collection (at the moment kept under the bed), the other, a good few years younger adamant at keeping up with her older sibling (insisted on the same sized bed and desk).*

*Out of these two rooms we would like to carve out, if possible, a walk in wardrobe with a Narnia style entry for bedroom 1 (teen) and also have a (Jack and Jill?) private bathroom for the girls to share.*

*We would like to keep the fireplace in bedroom 1; in bedroom 2 it is already covered and can be removed if necessary.*

*Style should be in keeping with the rest of the house."*

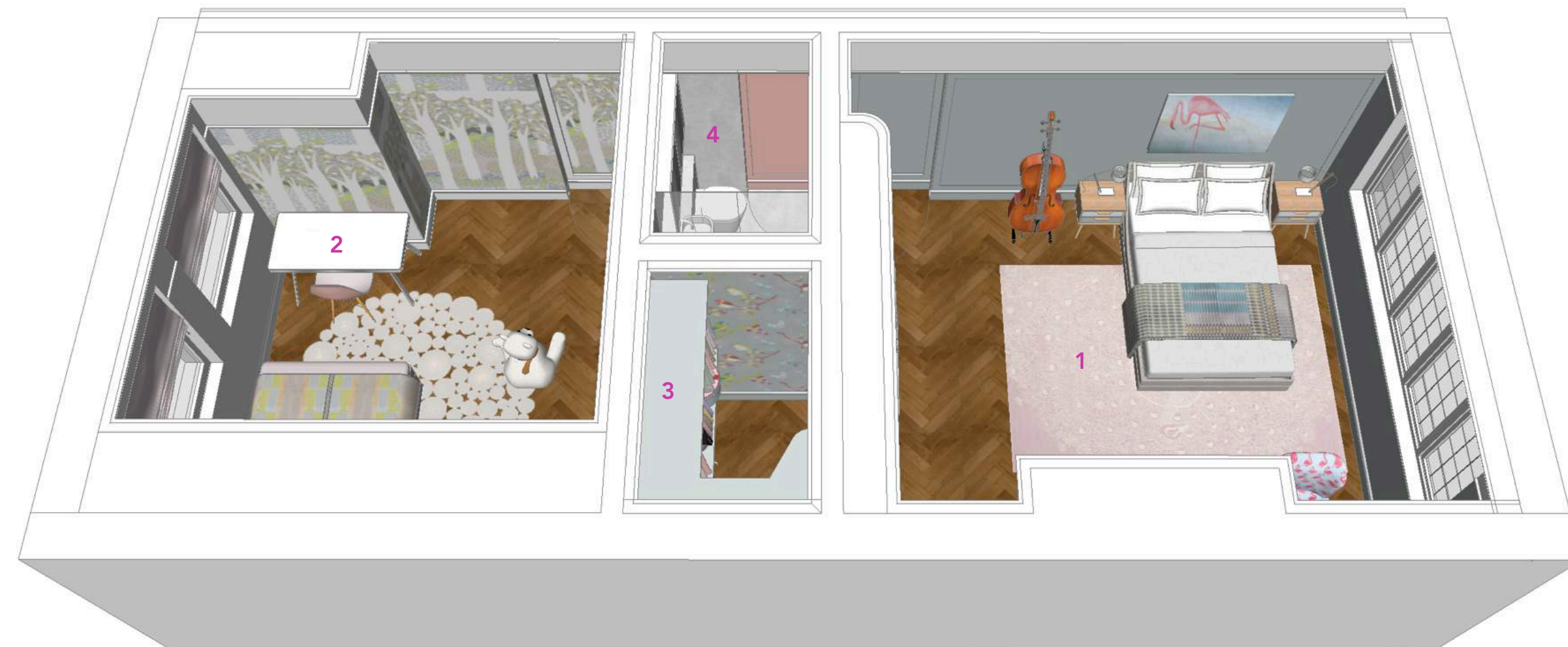


Space needed for a walk-in-wardrobe and new bathroom is carved out of the larger bedroom 2.

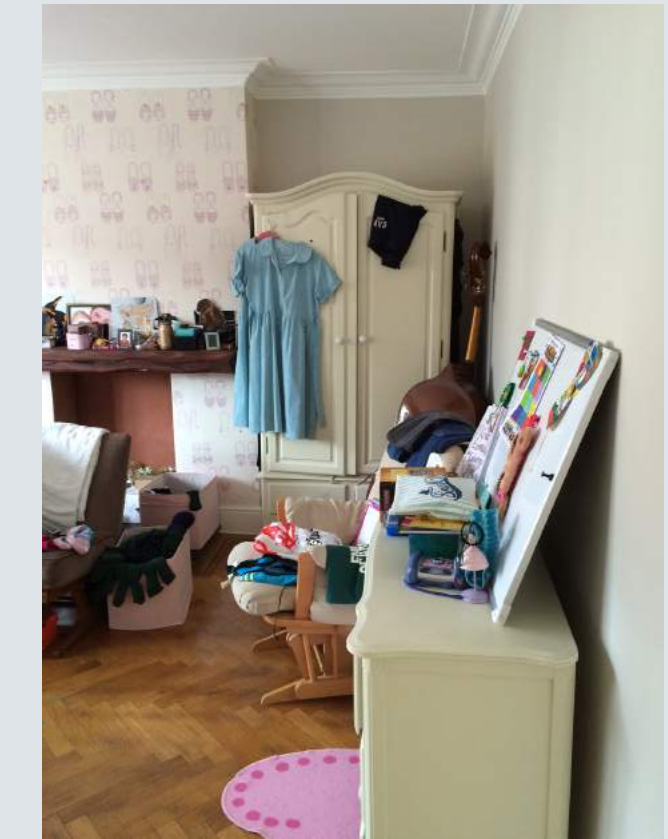
Two bathroom options are explored (these examples show a hallway entry). Whether the bathroom is entered from the hallway or privately from the girls' bedrooms is open for debate:

- hallway entry is a safer option for possible future migrations around the house, which can sometimes be rather unpredictable
- Jack & Jill style bathroom provides privacy, playfulness and a bit of grown up glamour for the younger members of the family.

Both rooms have their own distinct identities, suited to their proud new owners, but are also complimentary to the rest of the house, its style and decor.



- 1 - BEDROOM 1
- 2 - BEDROOM 2
- 3 - WALK-IN WARDROBE
- 4 - BATHROOM

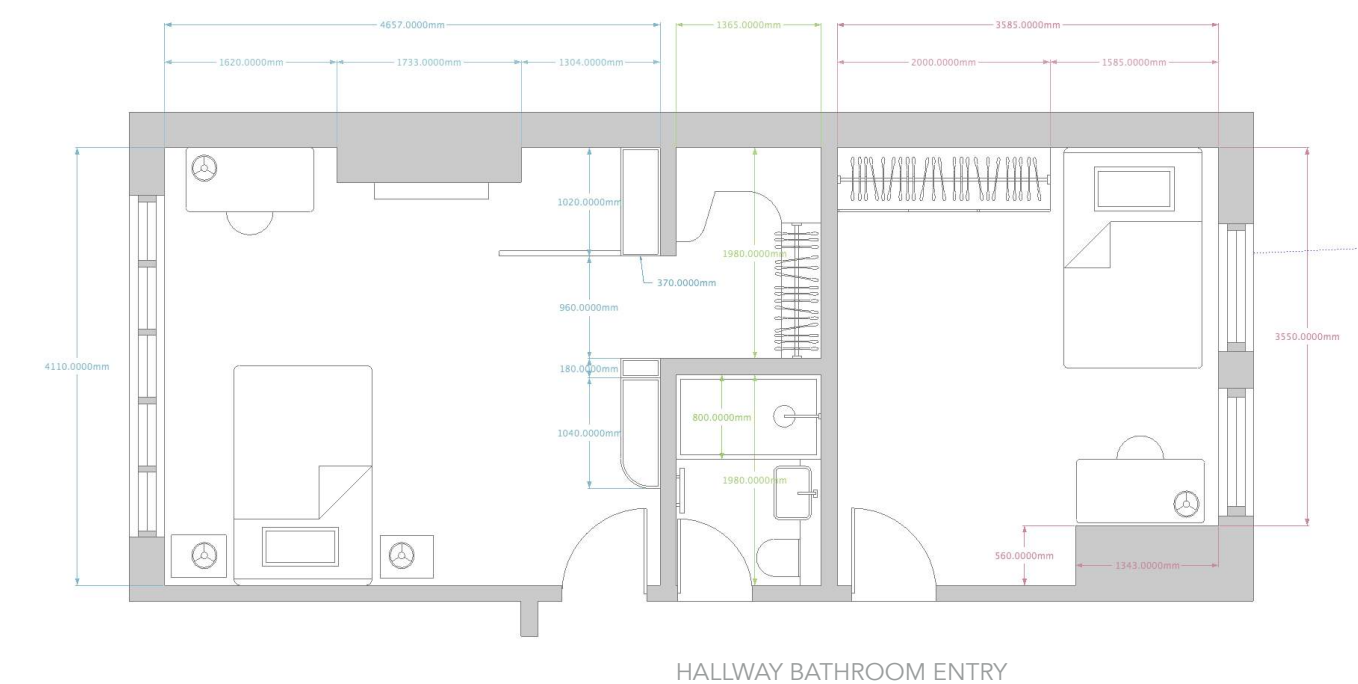


## Girls' Bedroom Design - Bedroom 1: Teen Bookworm

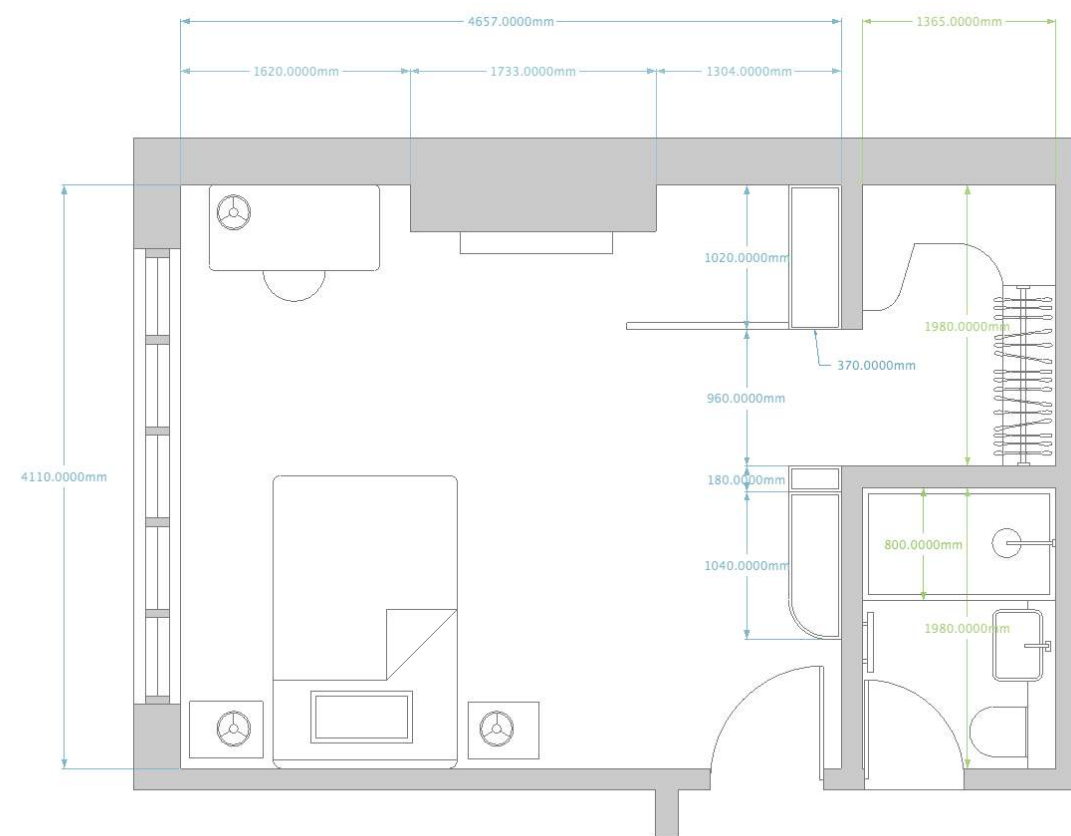
Children's bedrooms are essentially their sanctuaries - safe spaces they can retreat to when in need of privacy and older they get more prominent is the need. In this case we created a room for a young artistic soul, a teen cello player who adores reading. Design is soft, calming, timeless and can be easily adapted with small changes.

What is unusual about this room is that it contains two prominent elevations: the wall featuring a fireplace (which is usually the focal point of any given room) and a new library featuring a Narnia-esque ornate door leading to a walk-in dressing room. To avoid competition between the two, the whole room is painted in the same mellow shade of teal, a neutral and versatile colour complimentary to the quality of natural light for this room, its inherited features and colours used in the rest of the house.

At a later stage when more wardrobe space might be required in bedroom 1, bookshelves can be enclosed by adding doors and serve as a shallow wardrobe storage for folding garments (shirts, jumpers,...). In that case the new library would be built around the bed.



# Bedroom 1- 3D Plan



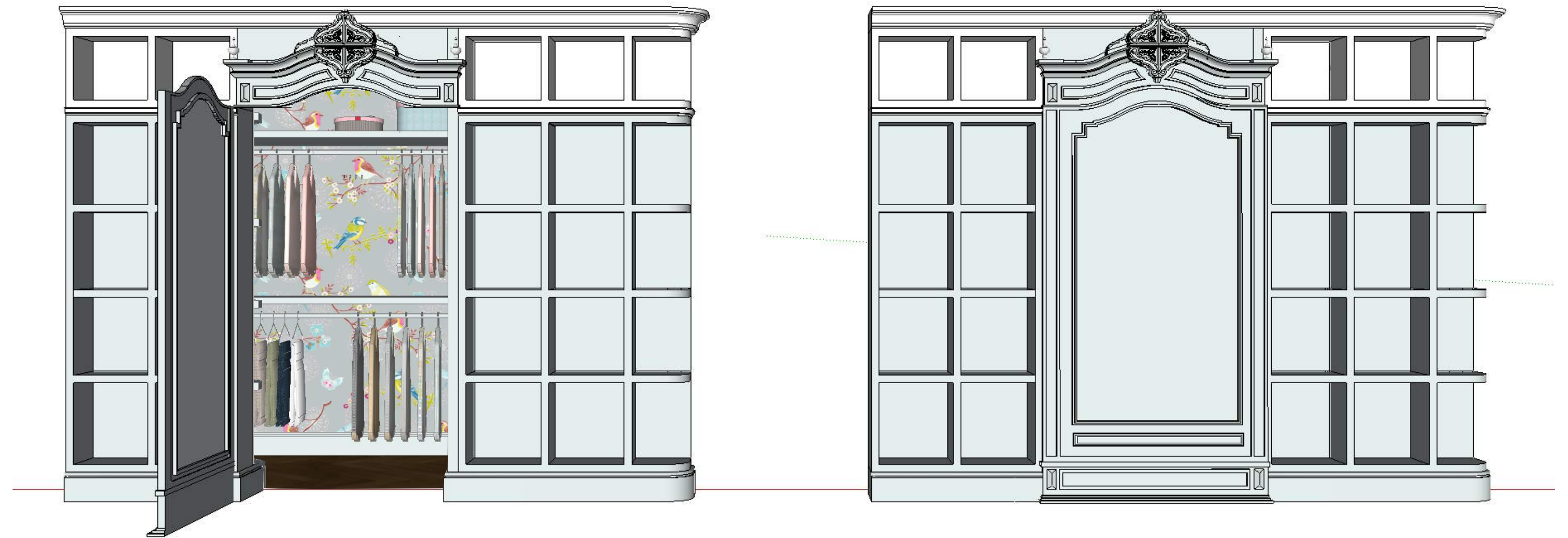
2D and 3D plans show the layout and distribution of additional spaces: a walk-in dressing room and new bathroom/shower room (option showing a common hallway entry).





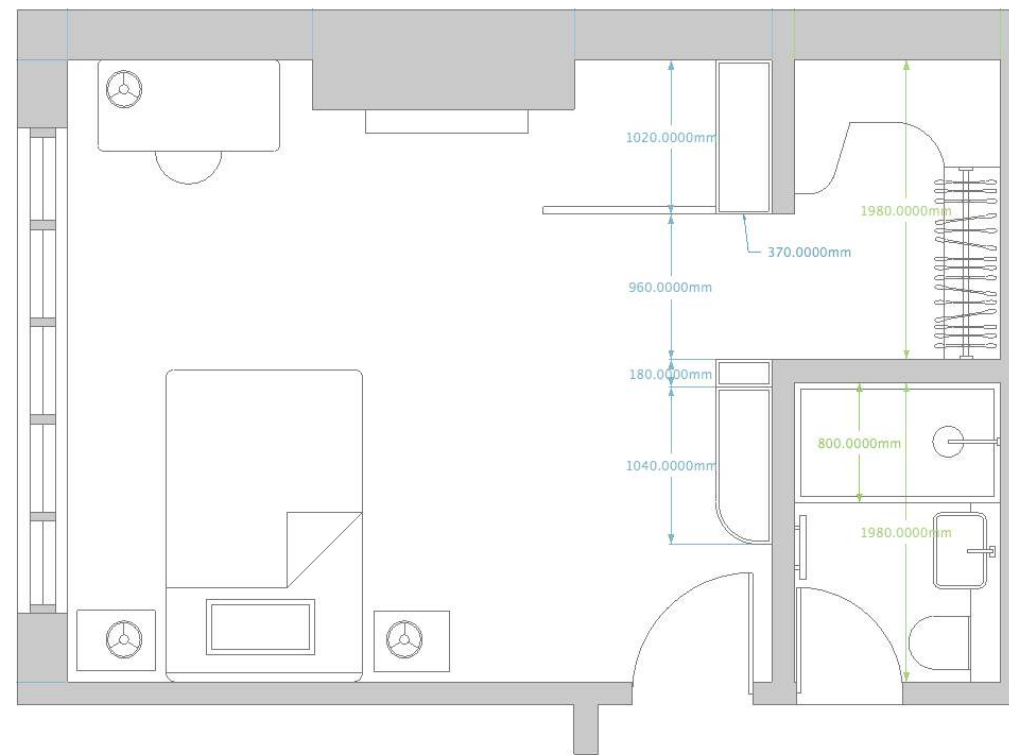
To avoid prominent room features competing for attention, in this case a fireplace and an ornate door, paint them in the same colour

## The Bookcase & The (Walk-in) Wardrobe



To create a cohesive environment we combined a bookcase/library with a large Narnia-esque door. Hiding behind them is a compact dressing room adorned with charming PiP Early Bird Grey wallpaper, hanging space and shelves.

## Walk-in Wardrobe & Bathroom



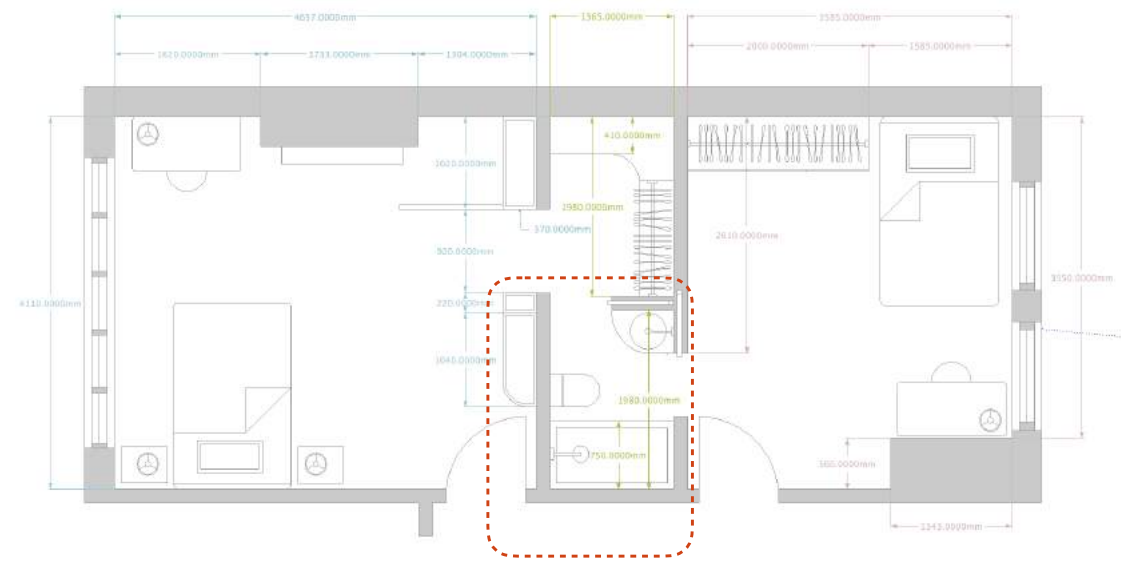
A small and cute dressing room entered through the large ornate door is decorated with PiP Early Bird wallpaper and contains ample storage despite its limited size.

In this option bathroom has a hallway entry making it available for use to the rest of the household. It is neutral in appearance except brightly painted door and towel radiator providing a visual ownership for the girls.



DRESSING & BATHROOM SECTION VIEW

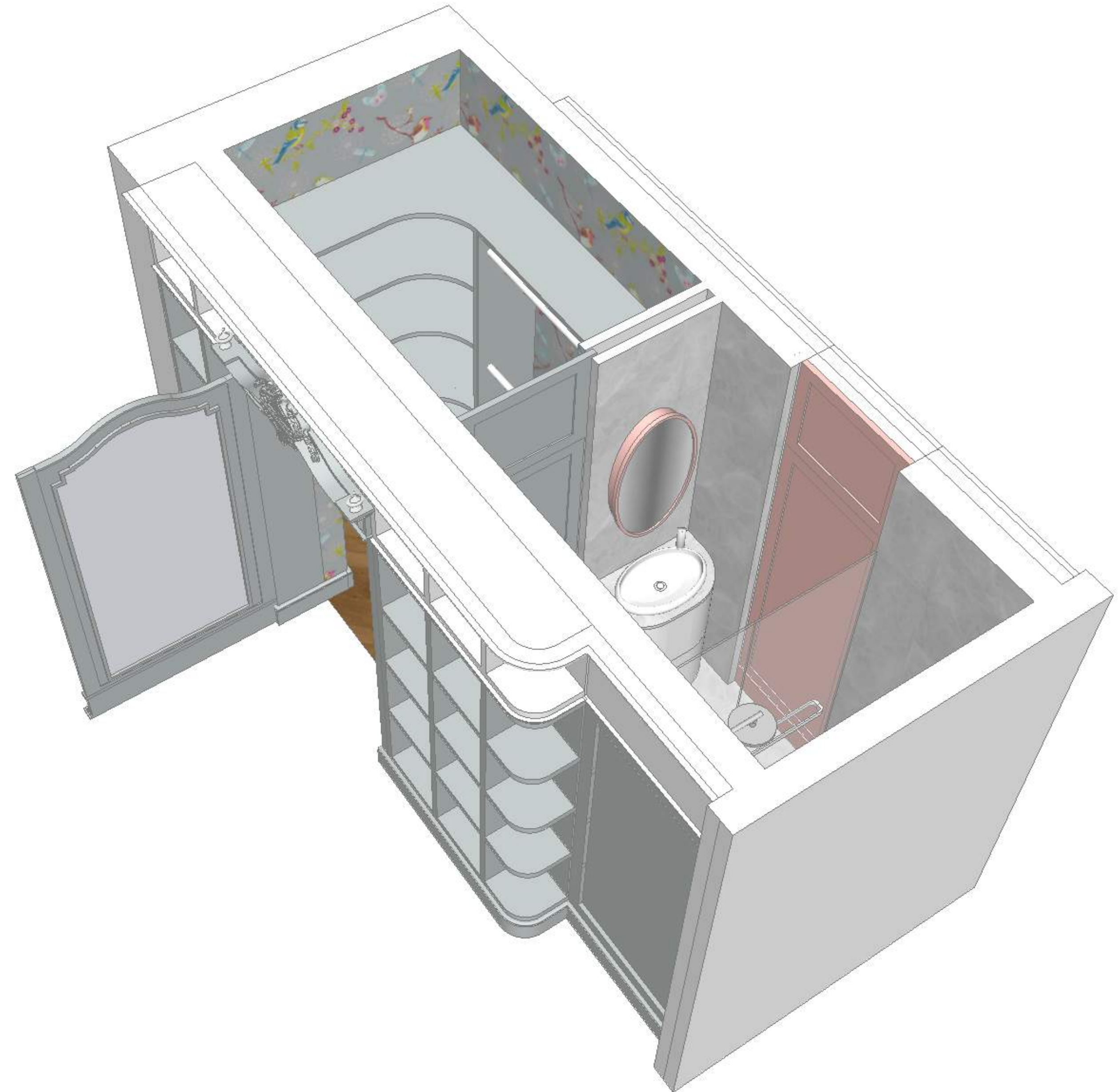
## Jack & Jill Bathroom



Jack and Jill is the type of bathroom that has access from two separate bedrooms. Doors can be locked from the inside to provide privacy.

It is a useful solution as it saves space, acts like an en suite and costs comparatively less. It is especially suitable for siblings with adjoining bedrooms.

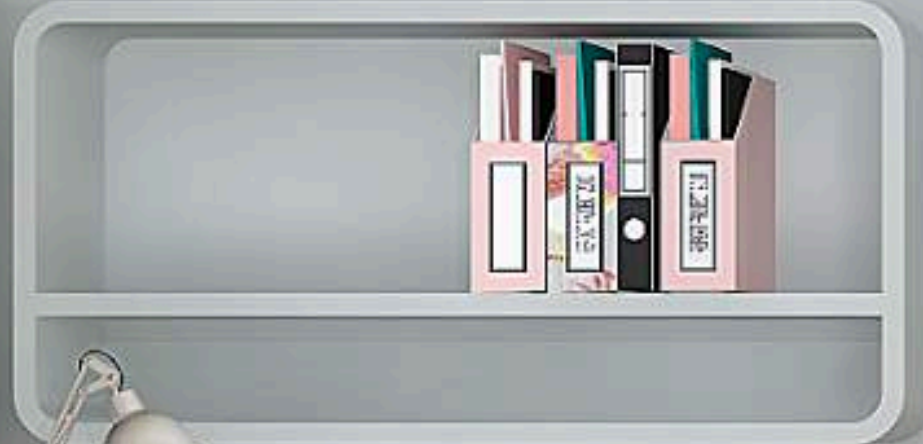
From the bedroom 1 bathroom is accessed through the dressing room while bedroom 2 has a direct (but disguised) entry door.











# Bedroom 1 Specs



Bespoke Artwork



Existing Floor



pipstudio.com  
PiP Early Bird Grey  
€52.95



superstudio.co.uk  
SERGE MOUILLE STYLE  
£446  
hollowaysoftudlow.com  
SERGE MOUILLE  
£4040



EXISTING BED



maisonsdumonde.com  
FJORD  
£105



kare.com  
CURIOUS WHITE  
£60



Existing Desk



kare.com  
Florida Flamingo  
£252.40



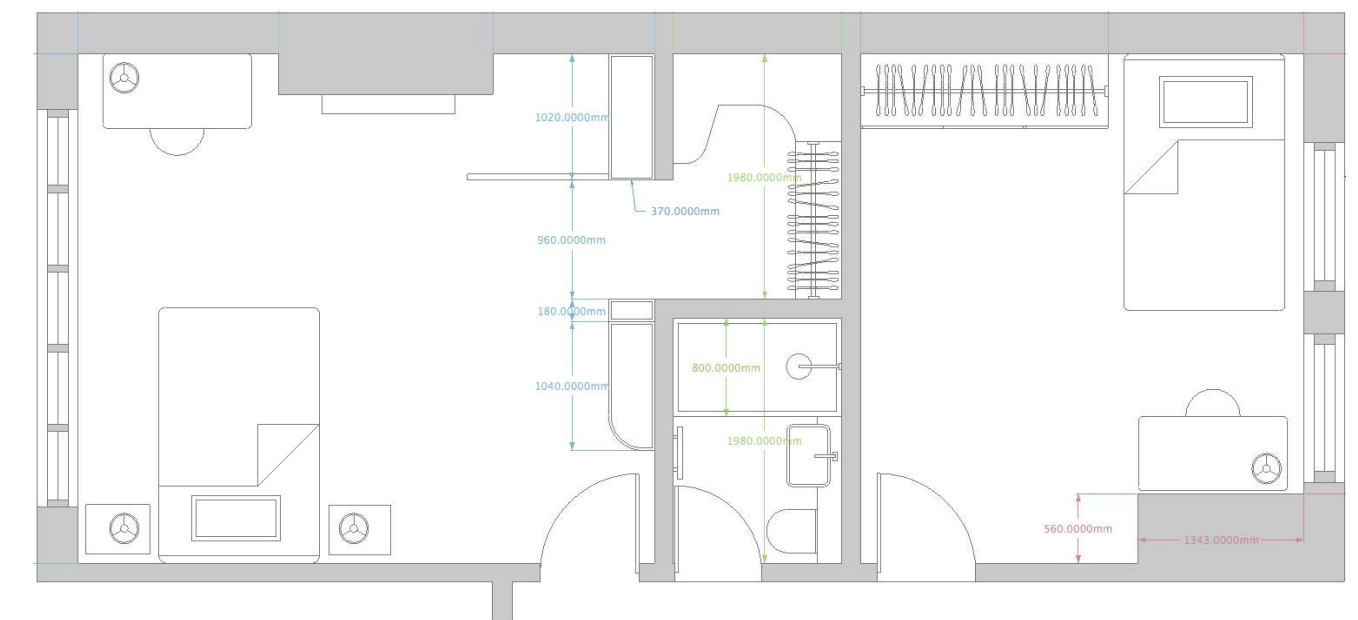
wayfair.co.uk  
Riikinkukko Rose by  
Vallila  
£152.99



BEDROOM 2



## Girls' Bedrooms Design- Bedroom 2: Younger Sister



Bedroom 2 was reserved for a younger sibling who is trying to keep up with her older sister - a grown up bed and desk were insisted upon so her age is reflected in decorative aspects of the room.

Disused fireplace was removed which provided space for a built in wardrobe with a bridge unit above the bed. Desk can be positioned either against the wall (as shown) or turned towards the window.

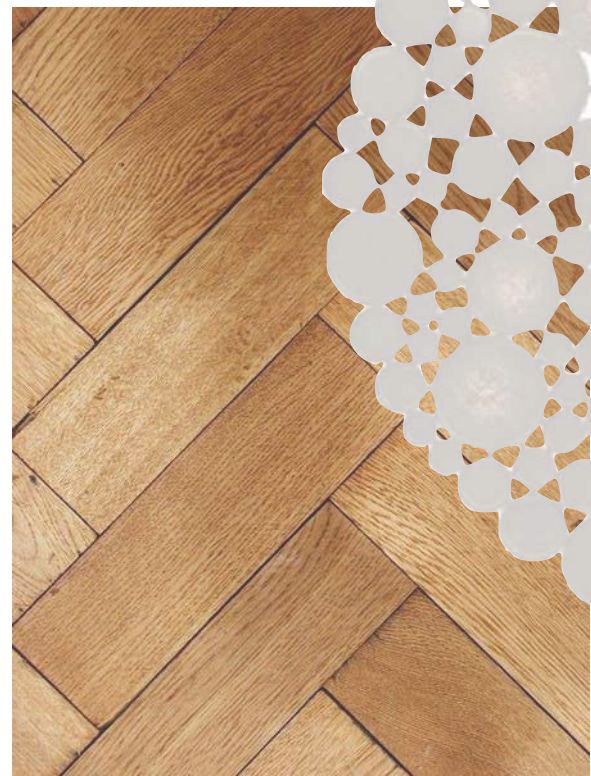
Apart from the window elevation, the rest of the room is wrapped in a Bird Forest wallpaper providing a gentle and fairy tale like background for a young girl first room.



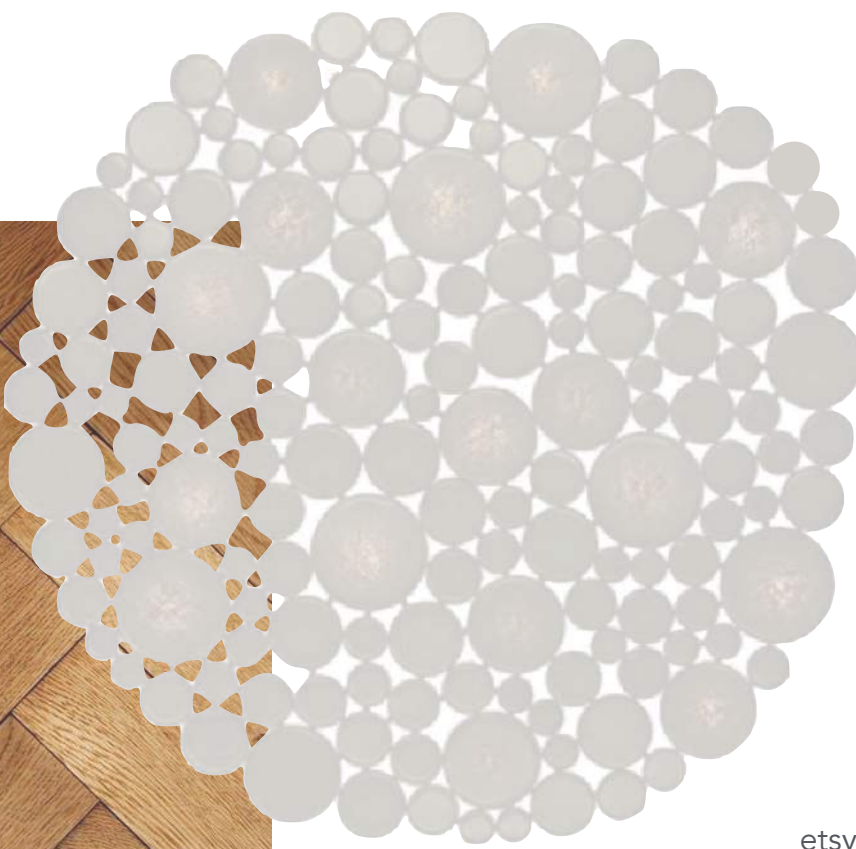
# Bedroom 2 Specs



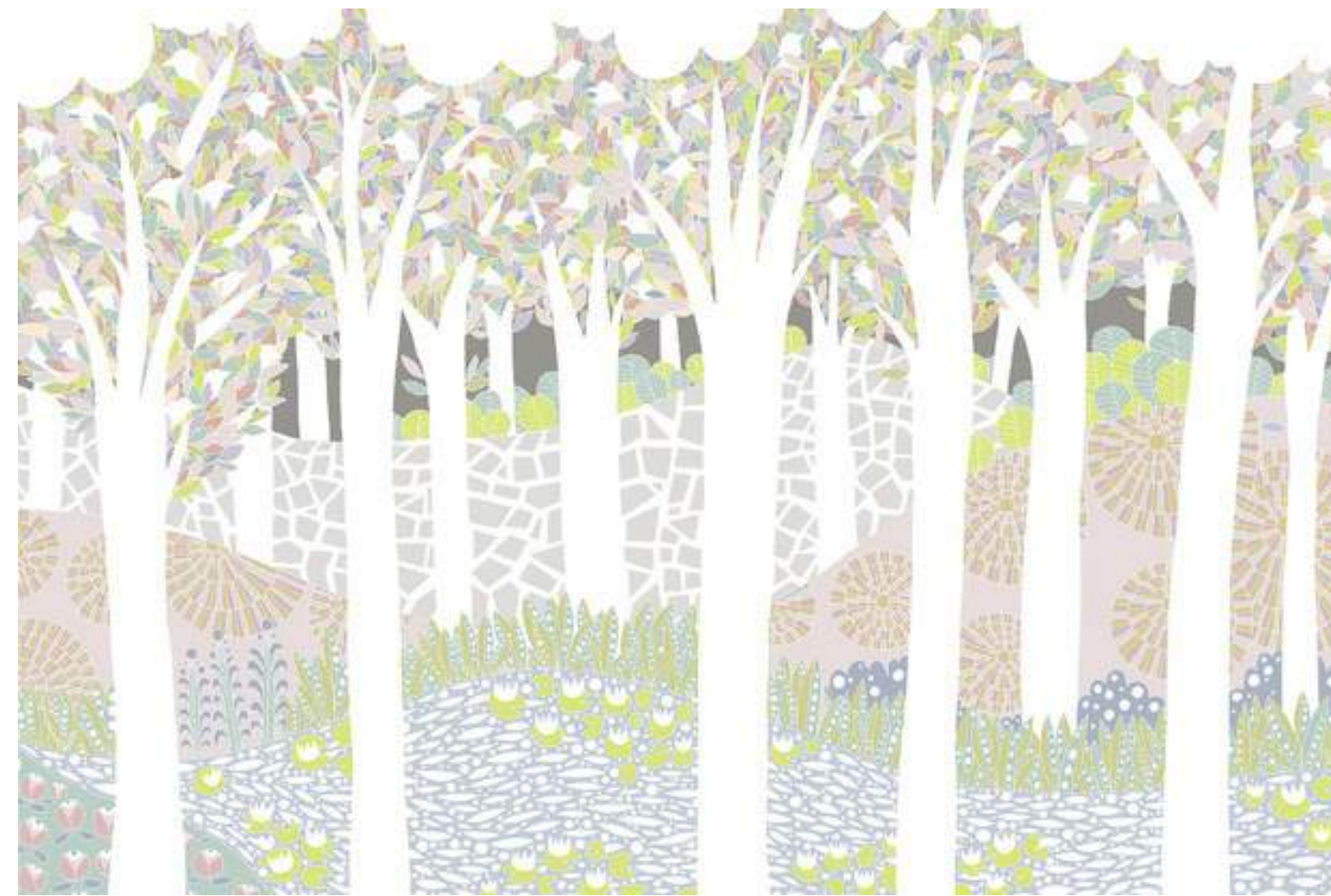
Existing Bed



Existing Floor



etsy.com  
WOOLLY CLOUDS  
£218.32



photowall.com  
Rina Donnersmarck - BIRD FOREST  
£35m2



atomicinteriors.co.uk  
BROKIS MEMORY  
£156



maisonsdumonde.com  
SWEDEN  
£98.99



Existing Desk



privatefloor.com  
EAMES PINK  
£98.99