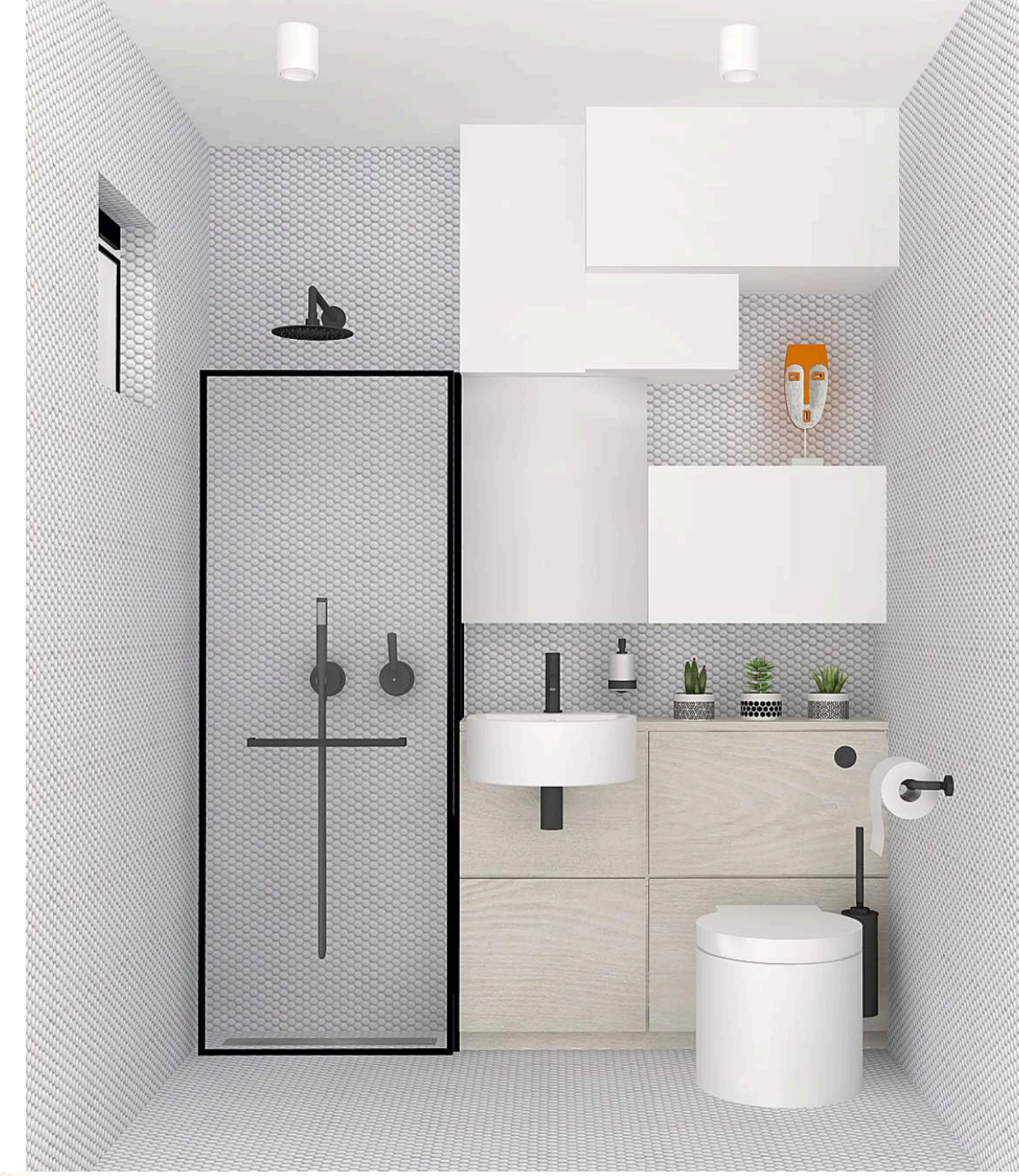




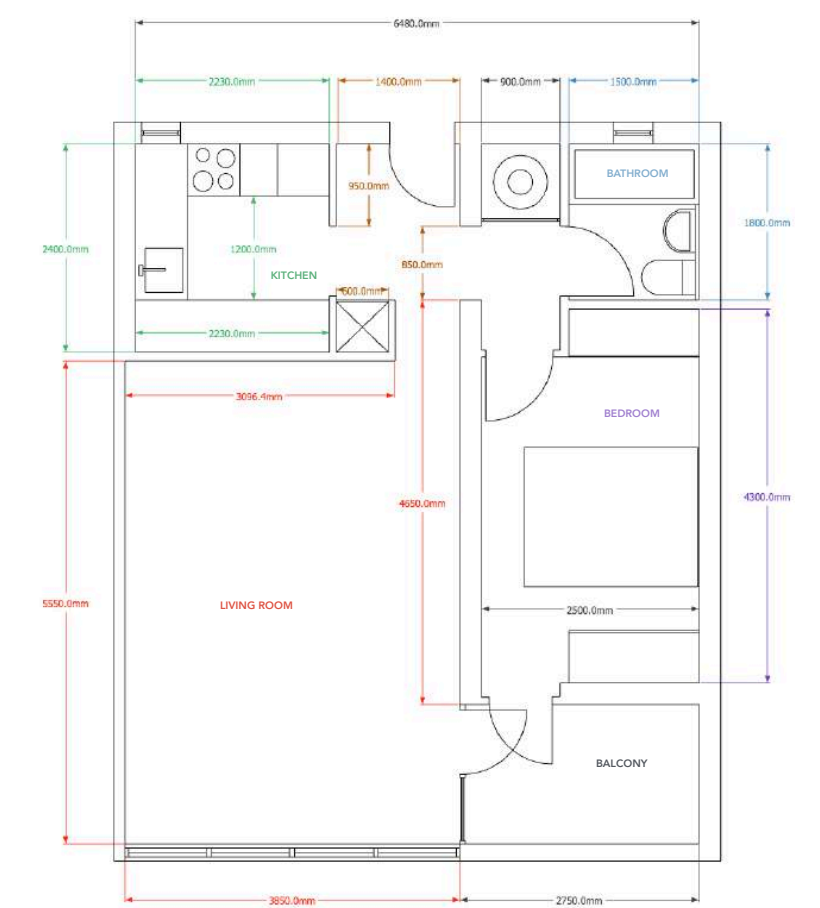
ACME D3  
Interior, Spatial & Furniture Design

## Apartment Renovation

Living Room,  
Kitchen & Bathroom  
Design



Many of us are aware that our habitats are in need of an update but we often don't know what that update should look like, what it would involve, where to budget and what to splash out on. Our London based clients, a professional couple, experienced the same problem with their one bedroom apartment. Situated in one of London's iconic Brutalist buildings built in the late 60ies, the layout is simple, to the point and serves the clients quite well. We were asked to come up with a refurbishment scheme based on reusing/renovating most of the existing elements and avoid any major building work apart from replacing some of the existing fittings. Areas requiring attention involved living room, kitchen and bathroom, all with issues of their own. In collaboration with our clients we designed a modern, light and cohesive environment that is a perfect mix of their tastes / styles, budget and statement pieces, all working like a balancing act between vividness and calm.







## Living Room Design Brief

Our clients sent the plan of their apartment with all the measurements, supporting images of the existing space and a brief with problems to solve for each area.

Here are the Living Room Design Issues / Brief:

- Our living room is drab and tired and the opening towards the kitchen useful but looks like a random cutout
- Loads of books, all taking valuable storage space but we couldn't find any ready made bookshelf to fit nicely, don't know where to place it
- floors inherited laminate, damaged
- old tv, too big but size great for watching movies, can it 'disappear'?
- we need a new 'heirloom' sideboard
- sofa is too hard, otherwise sturdy, needs updating
- coffee/dining table, not the greatest of shades but very practical (and was expensive)
- living room entry door is missing but is not missed
- we need to keep the work station where it is, it also works well
- mini trampoline is in use but is out of place and no space to hide it

Style wise, one of us likes white, light wood, Scandi style and the other dark grey, black, metal and 'industrial-ish'. We have quite a random collection of lamps and small pieces of furniture



As the existing layout works well for the inhabitants, all changes are mostly of decorative or restorative nature. Almost all existing elements are reused in the new interior design scheme and some new added to create a modern and bright space that reflects its owners.

- 1 - Old sofa is reupholstered and softened by a new layer of memory foam, backrest reshaped and new pillows added.
- 2 - Coffee/Dining table is treated with a new dark veneer.
- 3 - New ceiling light is a large Habitat's 'Astrid'
- 4 - To reframe the wall opening and create storage, we designed a bookcase consisting of both open shelving and existing cabinets.

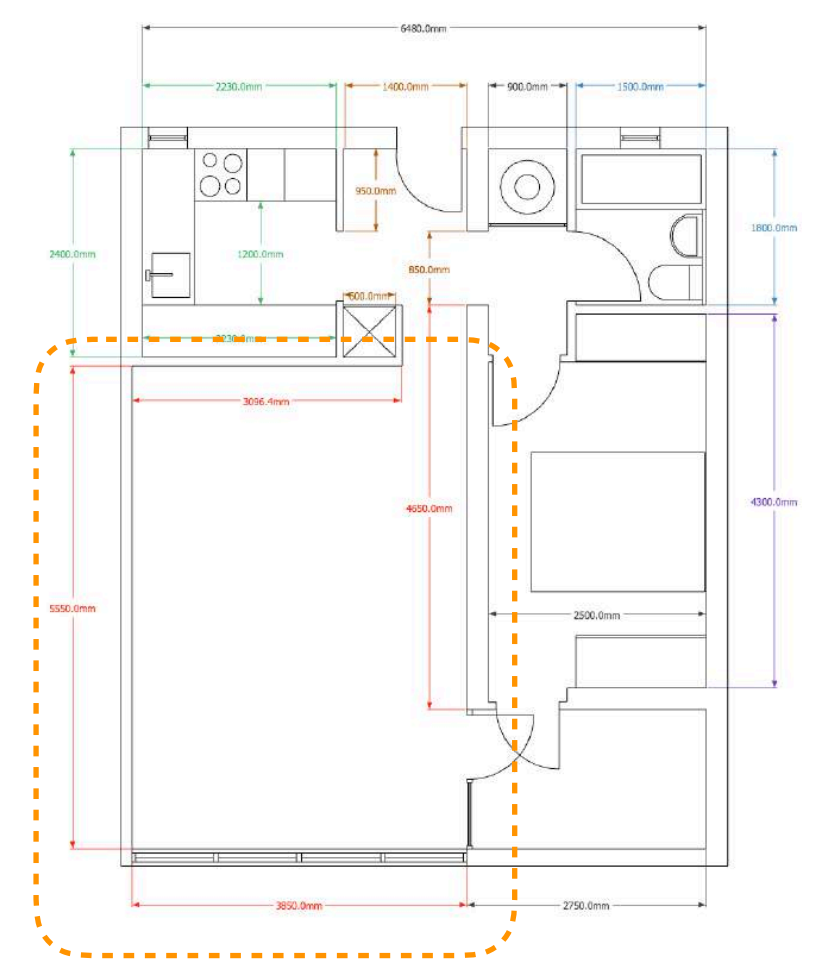
- 5 - Old TV is replaced by Samsung's 'The Frame' so instead of a huge dark rectangle on the wall there is art on display.
- 6 - New sideboard is from the AcmeD3 furniture collection 'Adam, Eve & the Tree of Knowledge', featuring Eve in blonde wood (any similar would work).
- 7 - Damaged laminate floor is replaced by limed oak planks
- 8 - Living room rug is by Gan - 'Alfombra Abstract Plata'





## Living Room Design

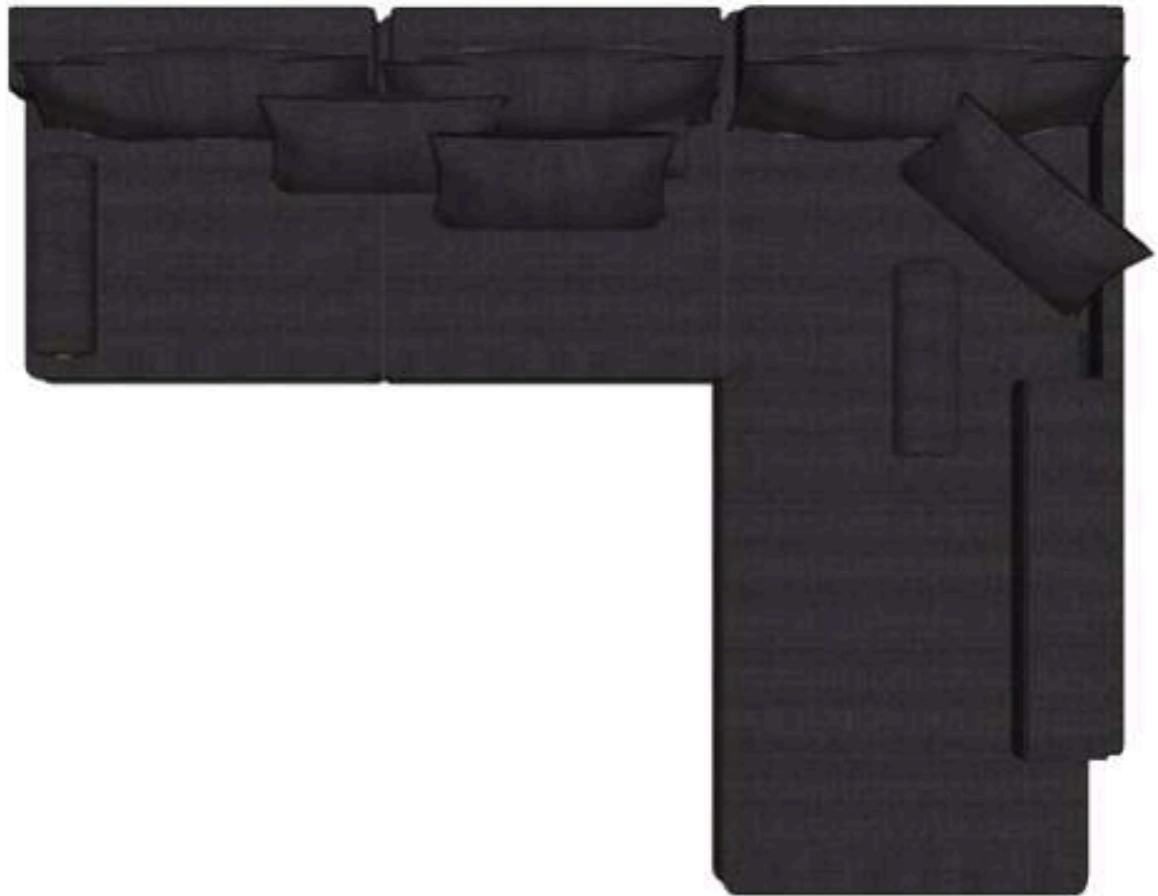
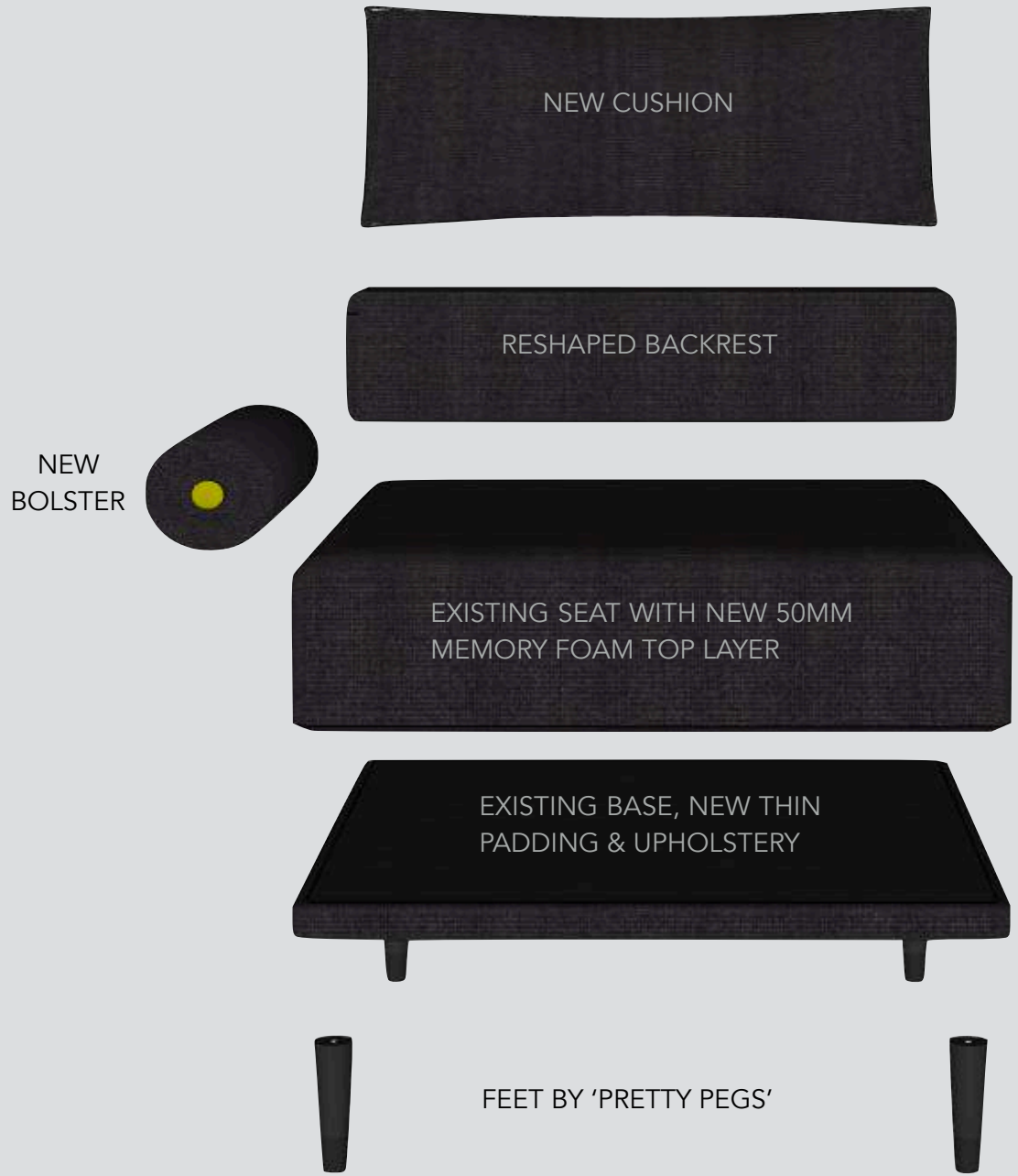
- 9 - Work station bridge desk is reused in the new scheme and veneered in light/blonde wood to compliment the finishes in the rest of the room
- 10 - Mini trampoline is transformed into a huge pouf (1m diameter) with easily removable cushion cover, adding extra seating and looks great wherever it is placed. Combined with the existing side table, it becomes a perfect reading and relaxing spot.
- 11 - New plant - although the view onto the park is absolutely beautiful, it extends into the room by introducing living plants





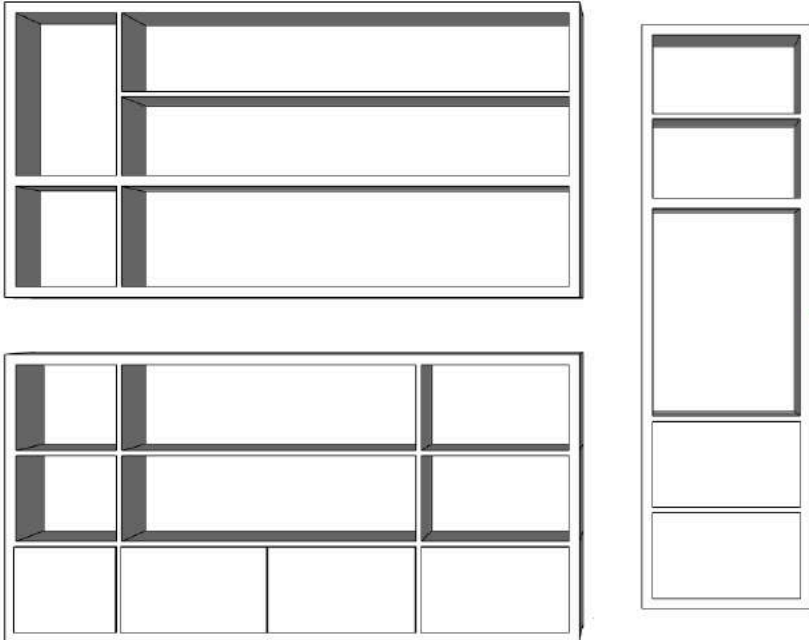
# Living Room Furniture

No 1 - Refurbished Sofa

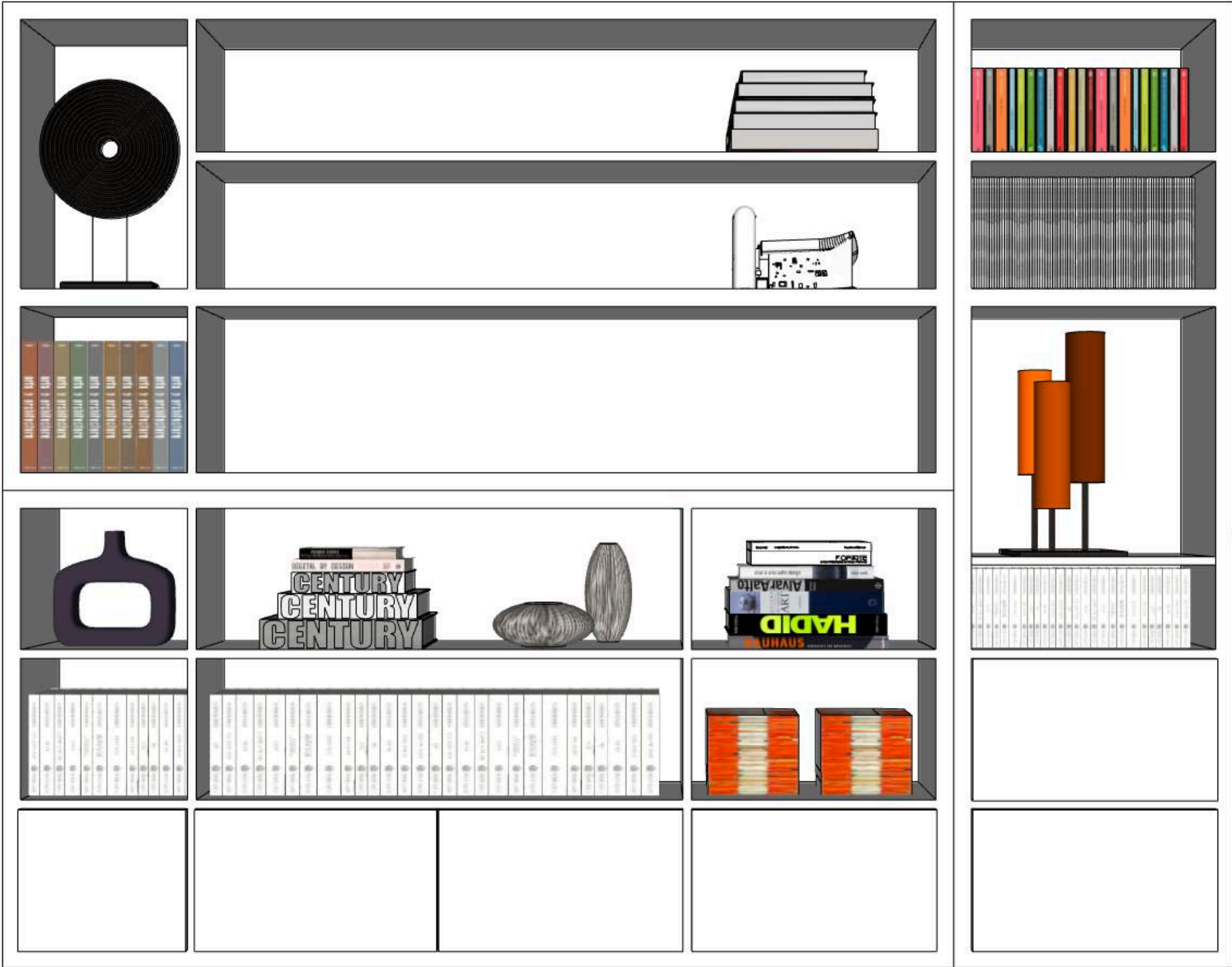
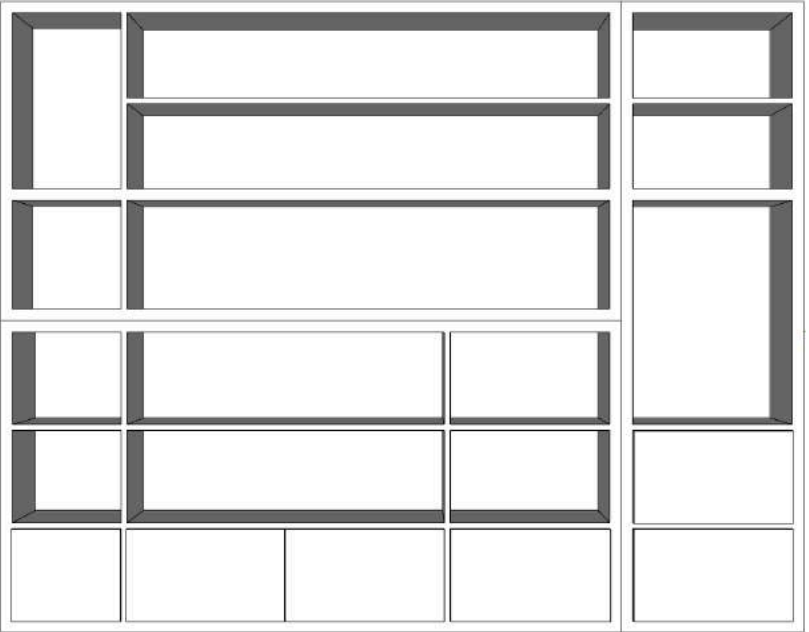


# Living Room Furniture

No 4 - Bespoke Bookcase / Shelving



It would be exceptionally difficult to find a ready made bookshelf that would fit the exact requirements so we designed a simple solution that would be composed of three parts, easy to build and assemble. It would incorporate existing white cabinets, beautifully frame the kitchen opening and provide both open and enclosed storage.





## Living Room Furniture

No 6 - Heirloom Sideboard



Eve, blonde

'Adam, Eve & the Tree of Knowledge' Collection  
by  
AcmeD3  
Made to Order







## Living Room Ideas

To avoid building work, frame the unsightly opening towards the kitchen with a simple custom shelving/storage unit.

By removing the door frame, the space will appear more free flowing and less compartmentalised.













#### Living Room Ideas: Create a Room With a View

Very often TVs are the focal point of our living rooms, especially for those who live in small apartments without space for designated media rooms. If displaying large dark rectangles are not to your taste, Samsung came up with a very clever idea to disguise them - 'The Frame' TV displays your favourite art/images when not in use.





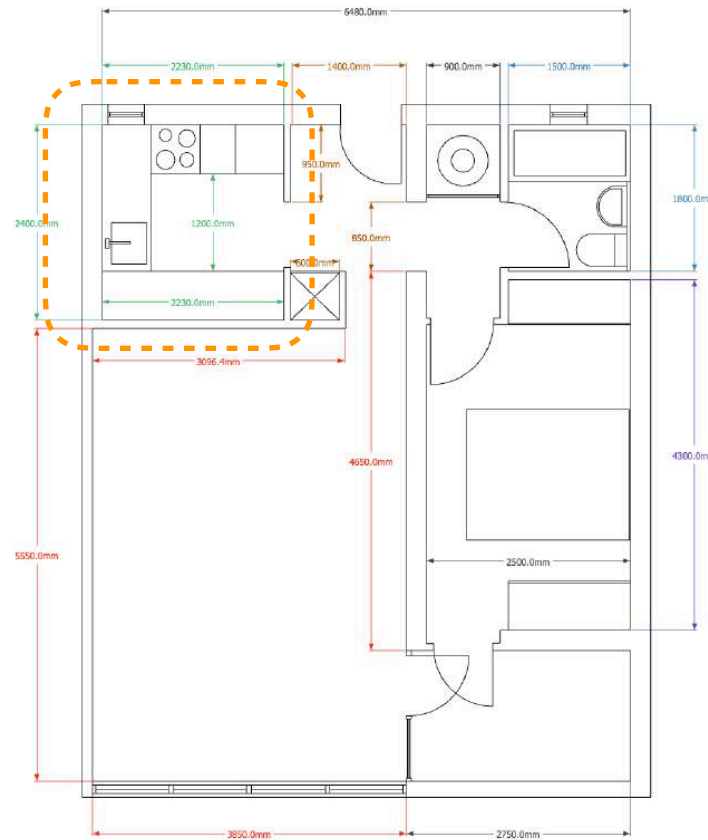




## Kitchen Design Problem / Brief

### Issues:

- wall cabinets are badly positioned and we would prefer more open storage
- cooker hood is missing
- window - leave or cover
- floor is a non slip surface which always looks dirty and has to be changed
- we can't have a tall fridge as the mains fuse box is low on the wall
- hot and cold water taps - cruel
- needs injection of life and colour





## Small Kitchen Ideas

This kitchen is a great example of how to update your kitchen on a smaller budget. We replaced kitchen wall cabinets with IKEA open metal shelving containing practical drawers. Existing base cabinets are refurbished (painted or resurfaced, depending on their condition) and new handles added.

Damaged part of the worktop is replaced by light/med oak plank. Tubular extractor (or any simple shaped one) fan adds a bit of a sculptural drama and the mains fuse box is hidden in the floating wall cabinet.

Huge injection of bright colour is delivered by an orange fridge/freezer and open shelving can be used for an even bigger impact by displaying colourful dishes and decorative objects.

On show are two versions of the kitchen: white and black.

General design or decoration advice is that small spaces should be treated with light finishes and colours so that they appear bigger and that advice still stands. However, dark shades can work to the advantage of small spaces so instead of appearing smaller they become warmer, more intimate and inviting. If designed well, the impact can range from elegance to drama.



- 1 - Refurbished kitchen units
- 2 - Replaced kitchen worktop
- 3 - White Glass Subway or Black Penny Mosaic tiles
- 4 - Black fittings - new kitchen tap
- 5 - IKEA Falsterbo Metal Shelving x 4
- 6 - Habitat 'Astrid' Light, small
- 7 - Hotpoint 'Luce' Extractor Fan
- 8 - Mains Fuse Box cover cabinet, IKEA
- 9 - Orange Retro Fridge/Freezer
- 10 - New flooring, limed oak





## Small Kitchen Ideas

Introduce open shelving instead of enclosed kitchen wall cabinets to visually enlarge the space and add character and practicality to small kitchens. Affordable black metal open shelving with drawers from IKEA is a perfect choice to add a bit of 'industrial' drama on a budget.





## Small Kitchen Ideas

Add character to your small kitchen by introducing dark colours like black or charcoal grey, and mix kitchen worktop finishes to break visual monotony. Complimentary bright shade appliance, like a retro orange fridge/freezer and colourful decorative elements for open shelving help create a bold, beautiful and unique kitchen where size no longer matters.





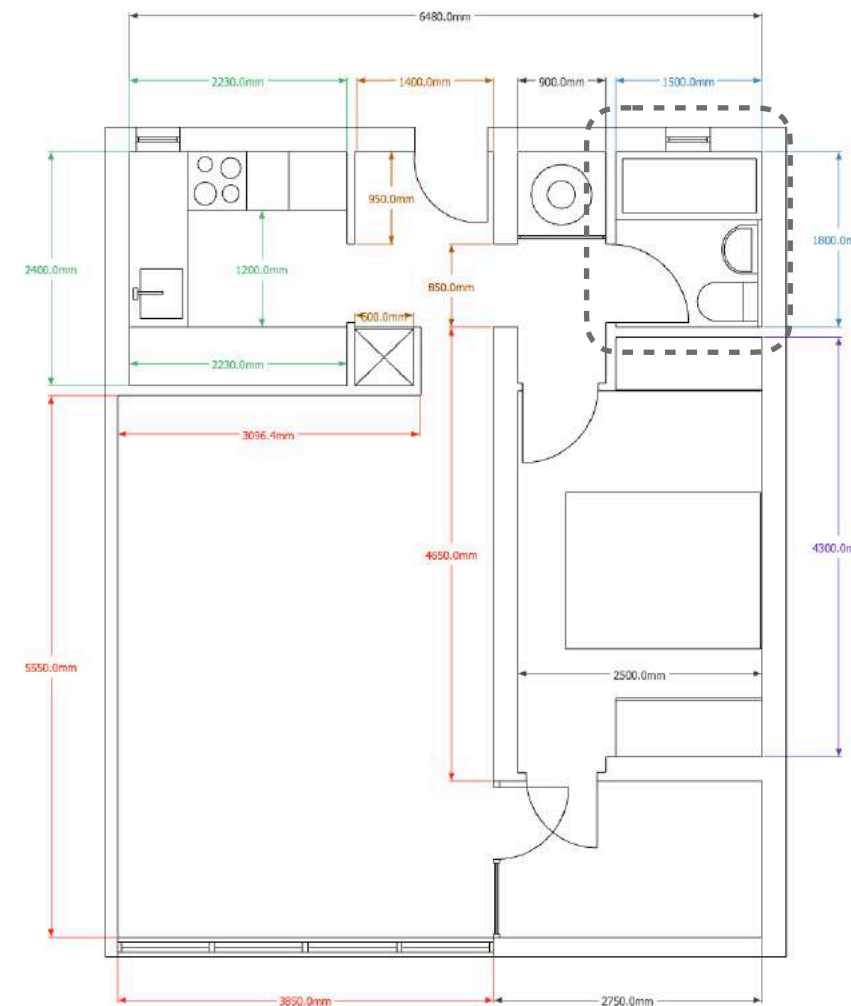
- 1 - Walk-in Shower
- 2 - Black Shower Fittings and Tap
- 3 - Bespoke Tiered Wall Cabinets
- 4 - New sink & Back-to-wall or raised toilet
- 5 - Marine grade light wood paneling
- 6 - Open shelf for display



## Small Bathroom Design Brief

Our bathroom is really tiny - it measures 2.7 square meters and two people trying to use it at the same time is definitely a crowd. Despite its small size it is very difficult to clean due to nooks and crannies behind the sink and toilet so we would love a 'sealed and clinically clean' fresh environment.

- we would prefer a walk-in shower instead of a tiny 1.5m bathtub but petrified that a shower enclosure would constrict the space even more
- change dated fittings
- change non slip flooring, it always looks drab
- storage is greatly needed





## Small Bathroom Ideas

We replaced the bathtub with a walk-in shower - shown both as a levelled floor wet room and with a raised shower platform, which will depend on the site constraints.

When not in use, shower screen folds away so that the full width of the bathroom can be used. Screen can be single or double (to completely enclose the shower area). This layout visually and physically widens the space.

Tiered wall cabinets of varying depths should cover all storage needs from towels to toiletries. To avoid hard to clean corners behind the toilet and sink, they are sealed off by marine grade wood panels.

Combining white tiles and wall cabinets with blonde wood and powder black fittings lends a clean, cool and collected Scandinavian air to this small bathroom.

Combinations like black, white and darker timber bring more industrial and moody design tone.







## Small Bathroom Ideas

### Space Savers

When struggling with storage in small bathrooms available space is usually filled with enclosed cabinets. However, leaving at least a small area open our eyes perceive it as an increased volume of space.

By adding decorative items like plants or art objects, the bathroom gains freshness and character.

Compartmentalized tiered bathroom wall cabinets provide an ergonomic storage solution with room for everything from towels to toiletries. It is also a savvy way of keeping bathroom organised and clutter free.





## Small Bathroom Ideas

Walk-in shower area (or a wet room with levelled floor if the space allows it) creates more visible and wider floorspace.

Combine black and white penny mosaic tiles and bathroom wall cabinets with wood paneling to bring warmth of natural materials. Different shades of wood paneling can also change the design or decorative style of the space - darker shades lean more towards industrial and lighter ones towards Scandi style. Add plants and decorative objects to create a memorable bathroom.

