



## Estetica Dentis Dental Clinic Design

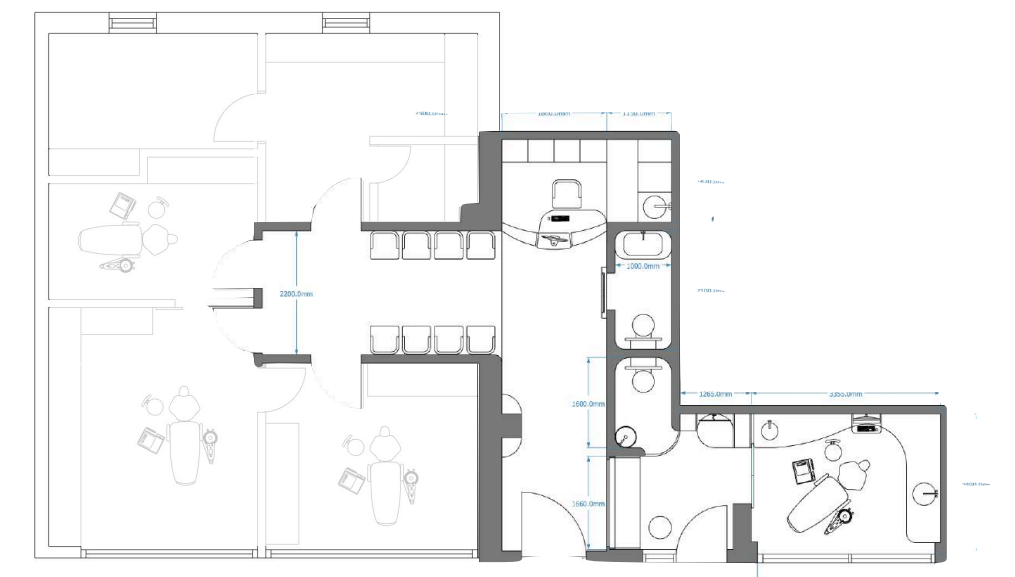
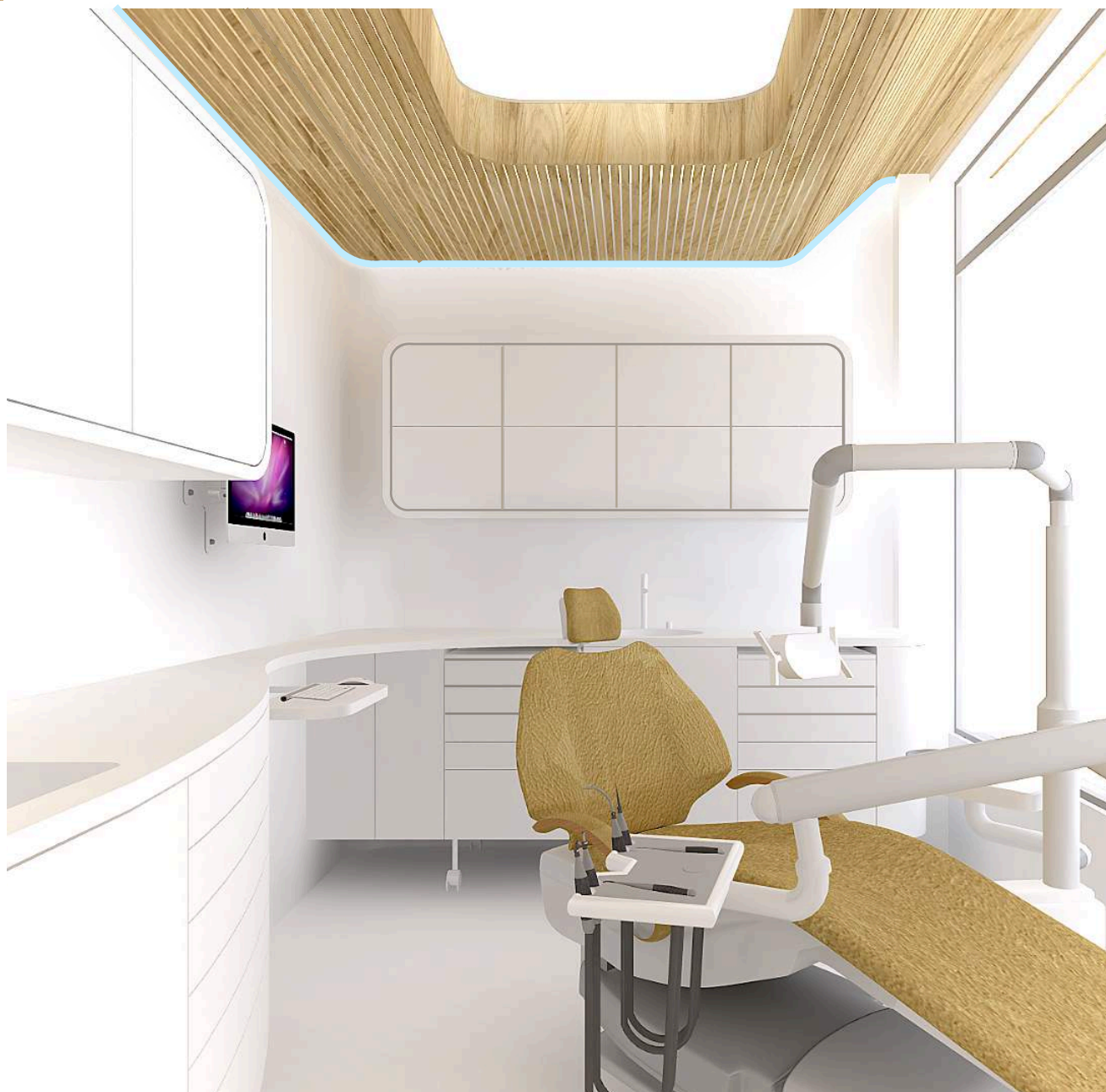


For many people dentist's visit represent one of the most unpleasant but inevitable experiences, usually involving fear, anxiousness and sometimes downright panic at quite a considerable financial cost. Although many of these can be improved with an empathic approach, kind word or even medication as a last resort, not enough attention has been paid to the role of physical surrounding and its influence on the patients' state of mind.

Receptions and waiting rooms, a final frontier before facing the inevitable, are frequently austere, rudimentary and basic spaces which, with the help of smells and sounds characteristic for dental surgeries, increase the level of discomfort even further.

The idea leading this design concept was to create a 21st Century space patients would experience as welcoming, warm and soothing to help alleviate their anxiousness and leave an impression of professionalism and care that would assure further visits.

Inclusion of a separate VIP dental office/surgery where patients would be catered for on a basis of privacy and exclusivity demands a considered approach which has to be reflected in design and separation from the main clinic.



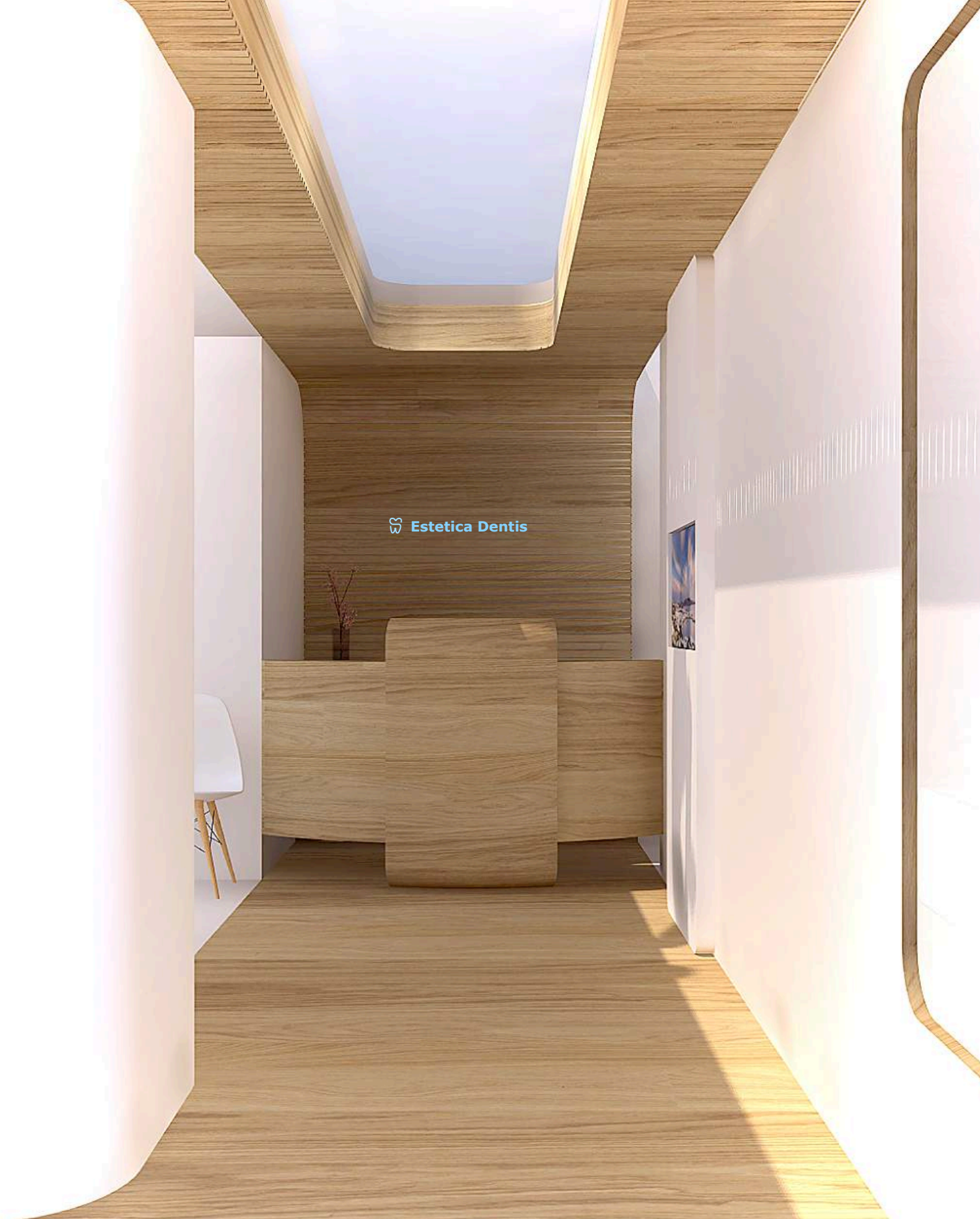


## Dental Clinic Interior Design Brief

Our clients are a long established and well respected dental surgery. The clinic is in the process of expansion, including a new technical lab. The existing parts are getting a revamp and some new roles. Great emphasis is to be paid to the development of a new VIP area.

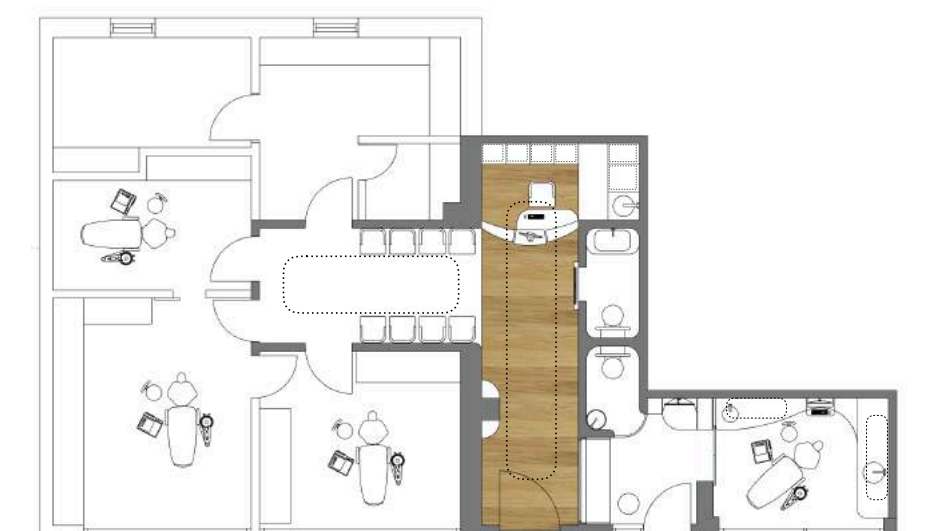
- Official reception does not exist and should be carved out of the existing staff break room
- Public areas require attention
- Public toilet is not well laid, too long and narrow
- Technical lab is moving and we want to use this space for the VIP clients
- Entry to VIP surgery should be separate

Style wise - modern, representative of us



Starting with the basic psychology - entry facing reception is the first and essential step as the patient would be immediately aware where they need to go and whom to approach for further instructions. Majority of the entry and reception area is clad in wood to provide a feeling of warmth, solidity and familiarity.

It is contrasted by an entirely white waiting room zone where carefully considered coloured lighting contributes to the overall feeling of calm and relaxation.







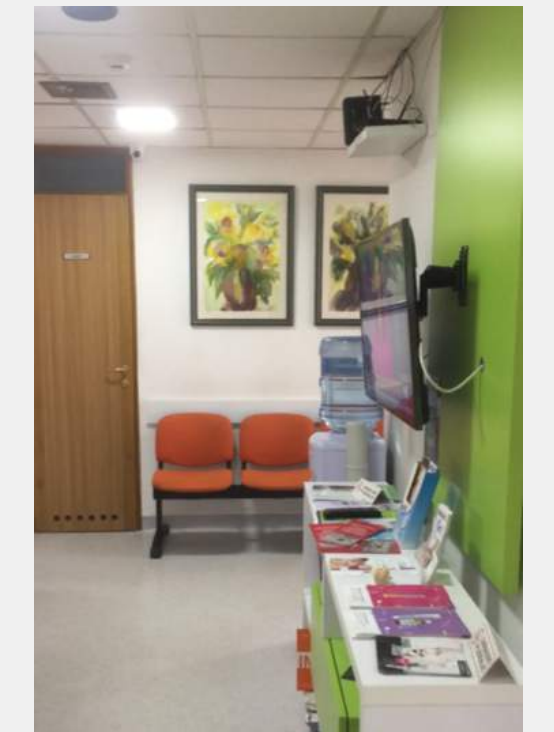
Psychological research shows that warm shades of aquamarine blues and greens work particularly well in inducing the feeling of calmness. The effect is best achieved not by painting the walls but actually through lighting which discretely illuminates and colour-washes the space. Additional source of light is provided by four floor to ceiling frosted glass doors.

a - TV is attached to the surface sliding bathroom doors and

b - magazines and reading material are placed on a custom shelf just above waiting room chairs.

The overall look is softened by curved angles and corners and gives an impression of a slightly futuristic but friendly and approachable space that is pleasure to visit and work in.

## Dental Clinic Interior Design





# Dental Clinic Interior Design - Reception







 Estetica Dentis







1

2 3





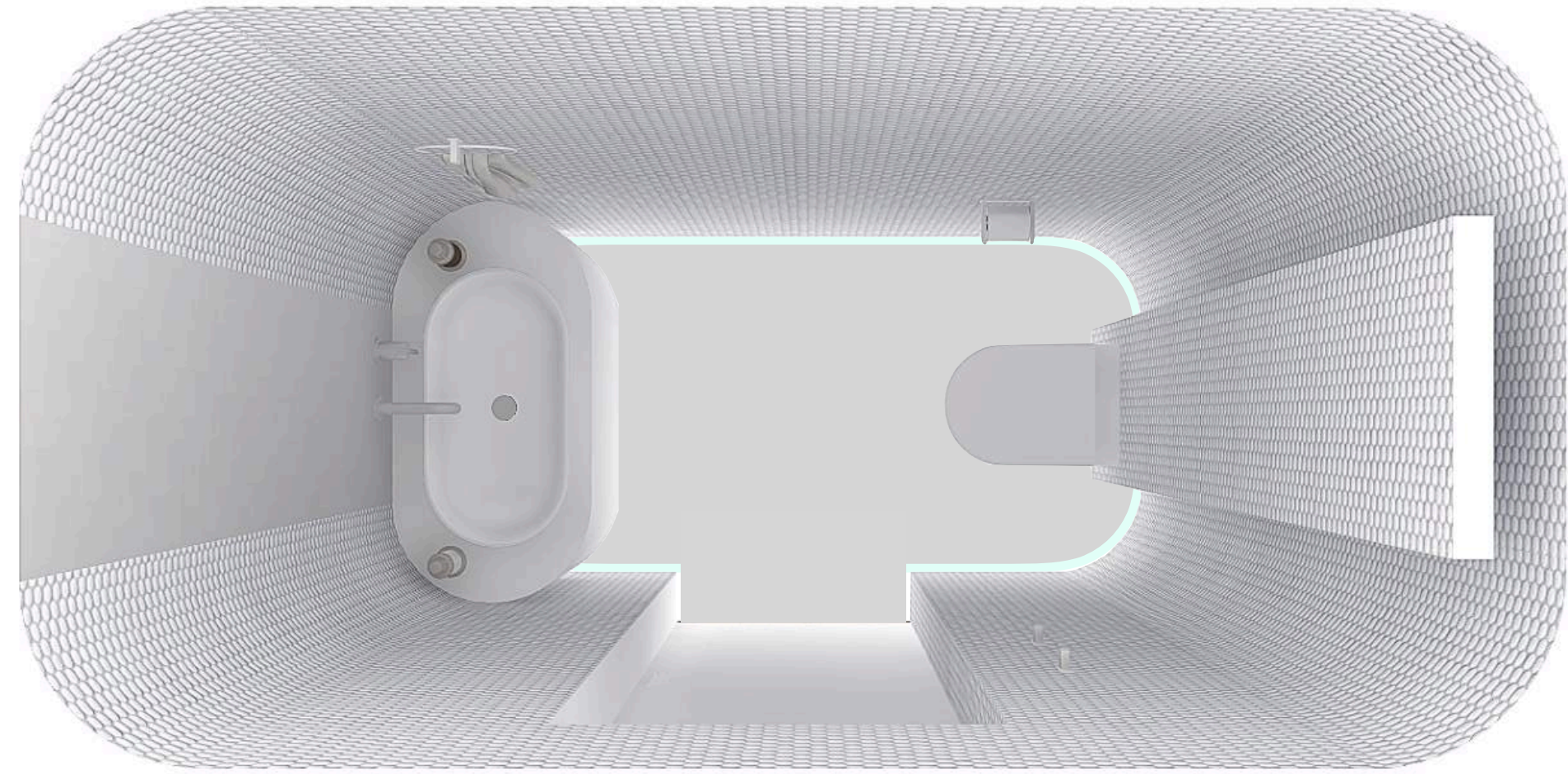


## Dental Clinic Interior Design

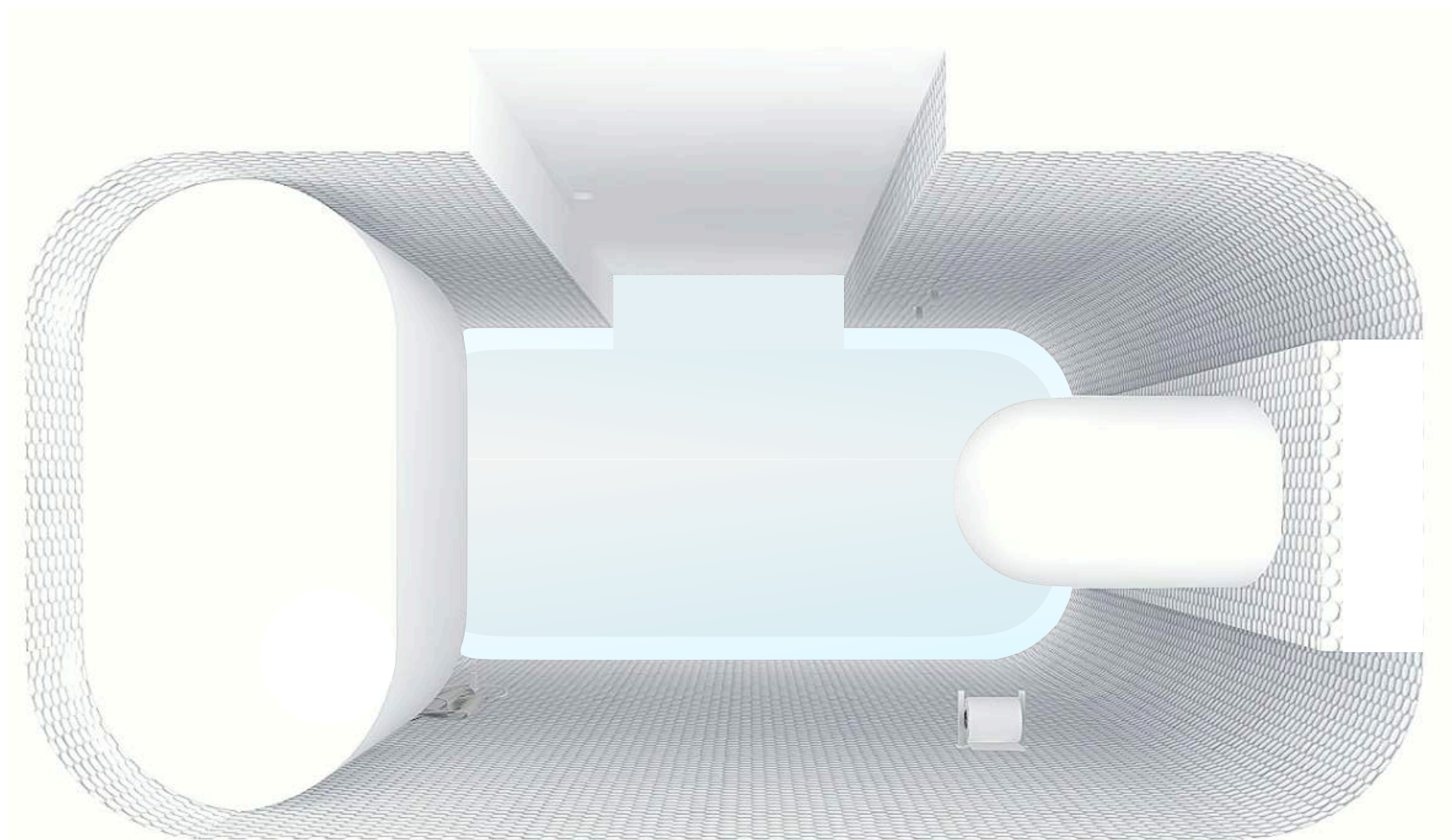


### Restroom

Limited size is counterbalanced by ergonomic layout and clever lighting. Illumination sources framing the floor and ceiling emit a soft glow and combined with the curved space and fittings create a calming, slightly futuristic and impressionable restroom visit.



TOILET TOP VIEW - SHOWING FLOOR LIGHTING

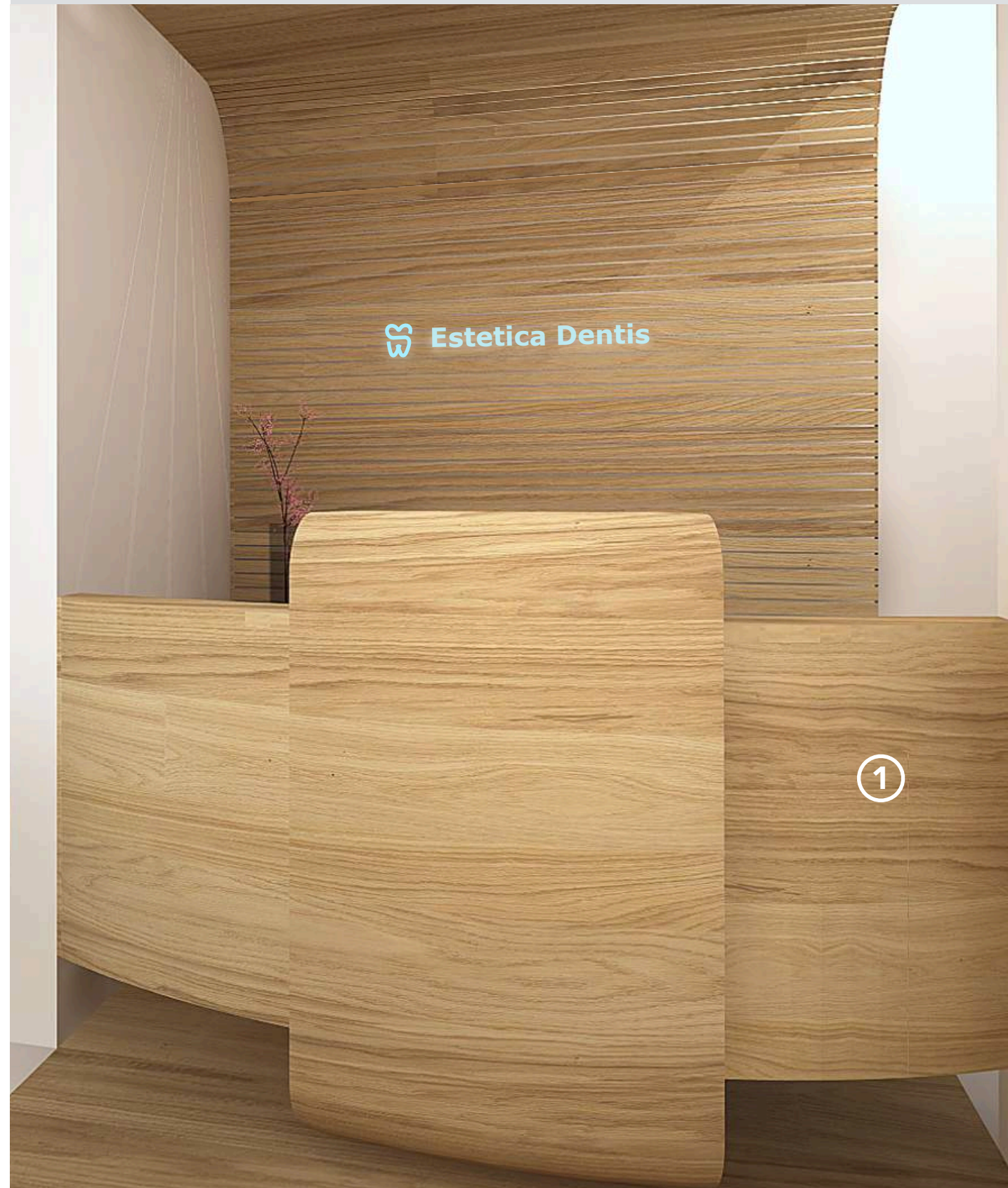


TOILET BOTTOM VIEW - SHOWING CEILING LIGHTING



# Dental Clinic Reception Furniture

## No 1 - Desk



Reception desk is formed of a double layer of shallow interconnected curved and bent wood panels, work surface and an ergonomic footrest.



TOP



BACK

Ergonomic footrest/  
Floor attachment

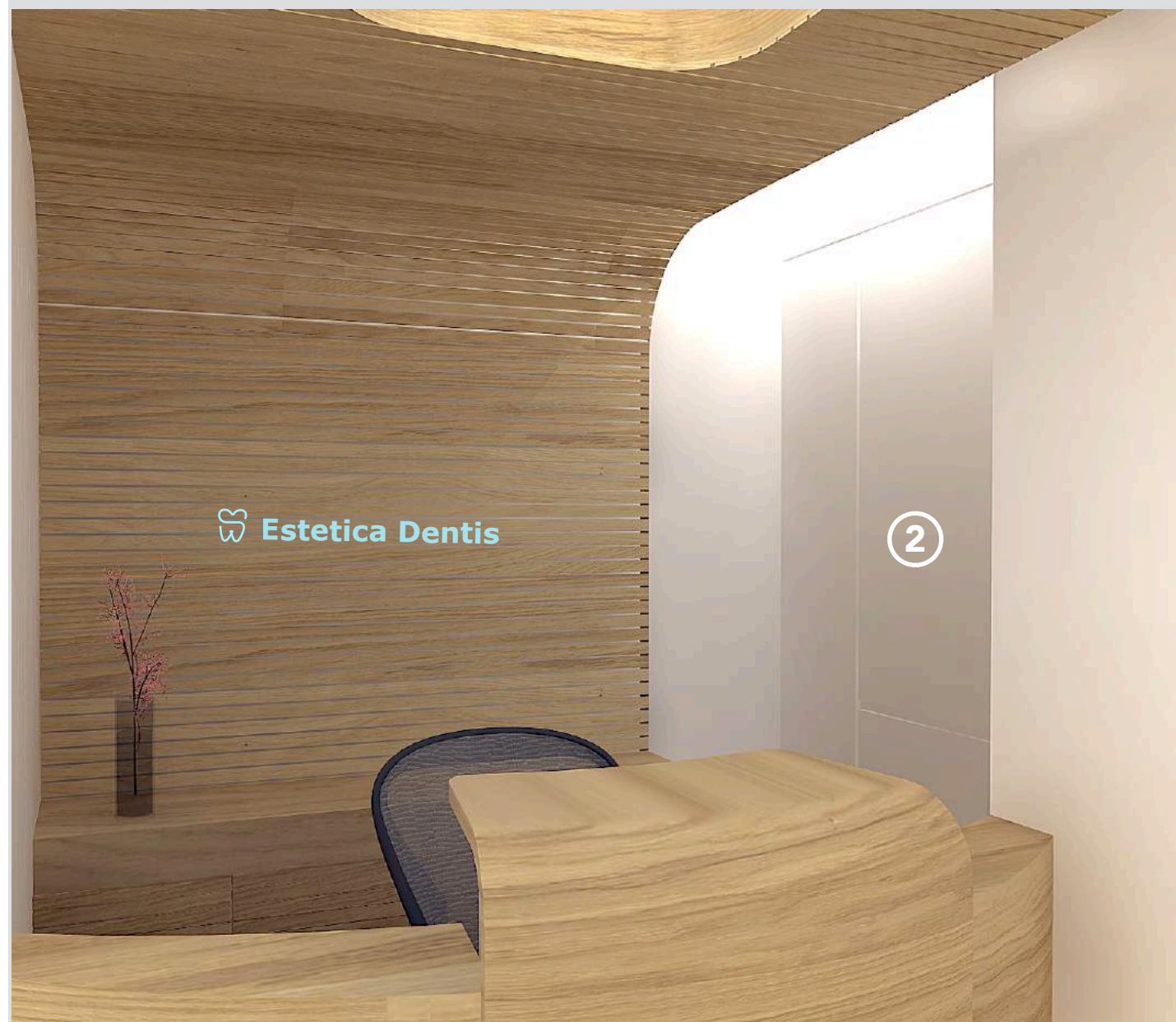


FRONT



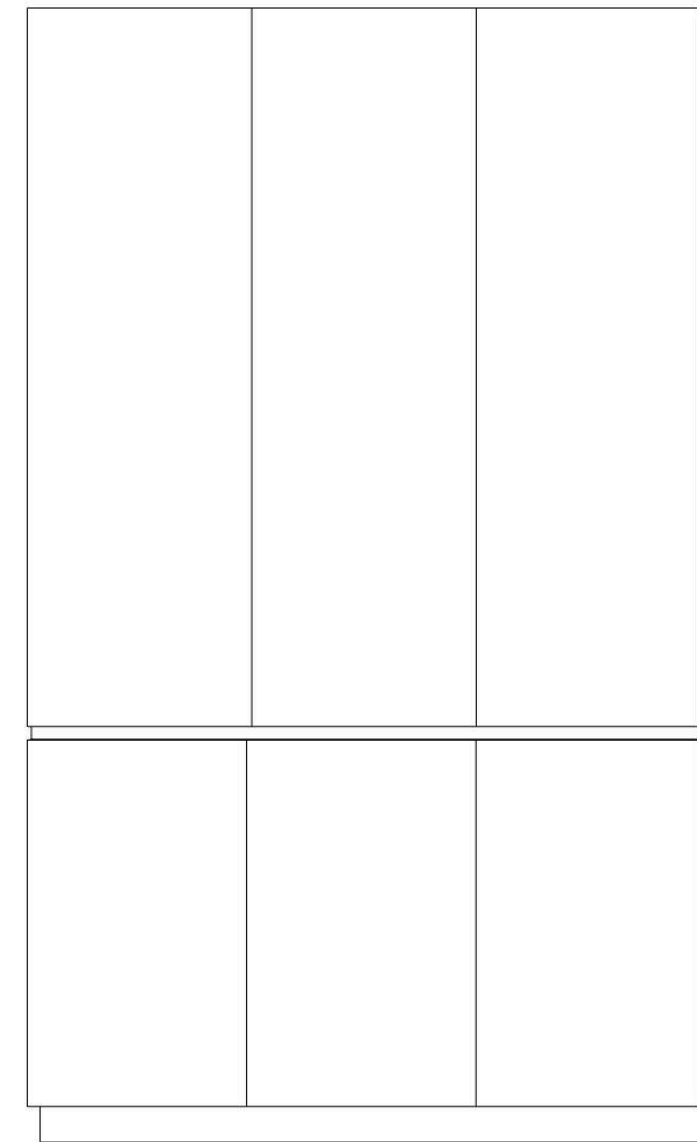
# Dentist Clinic Reception Furniture

## No 2 - Kitchenette/Filing

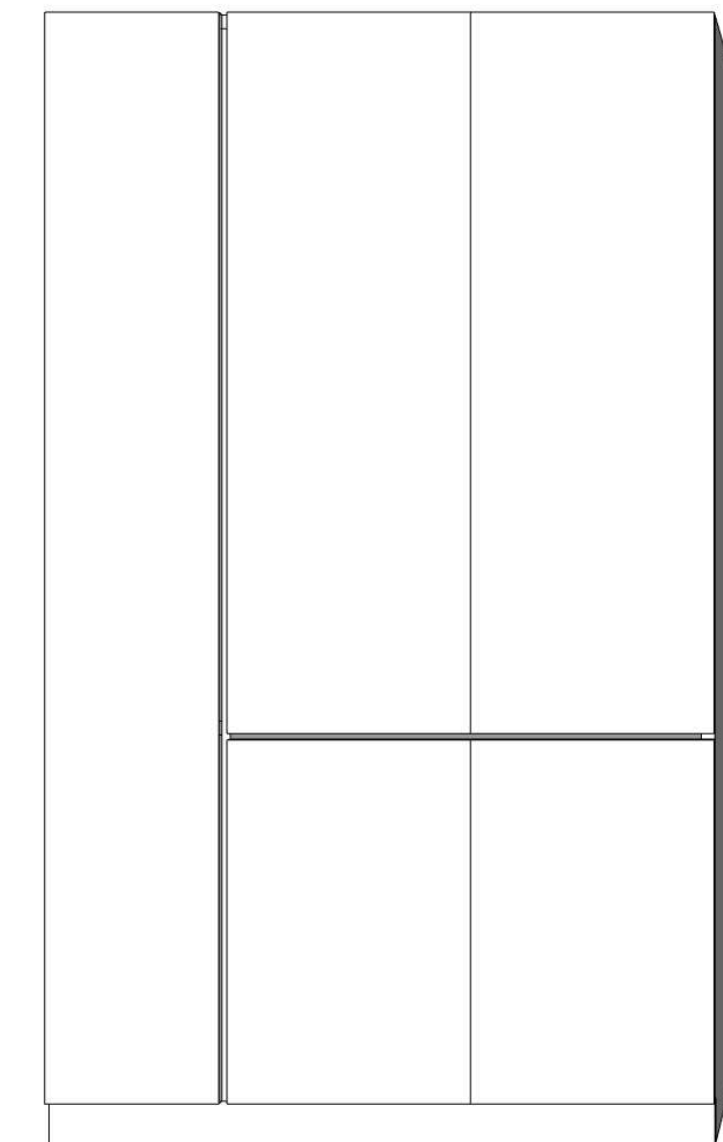


Depending on the clinic's filing storage needs, the space can be used for

- a) a practical and hidden from the view kitchenette that spans the whole width of the wall or
- b) combine kitchenette with a tall filing cabinet.



A - KITCHENETTE



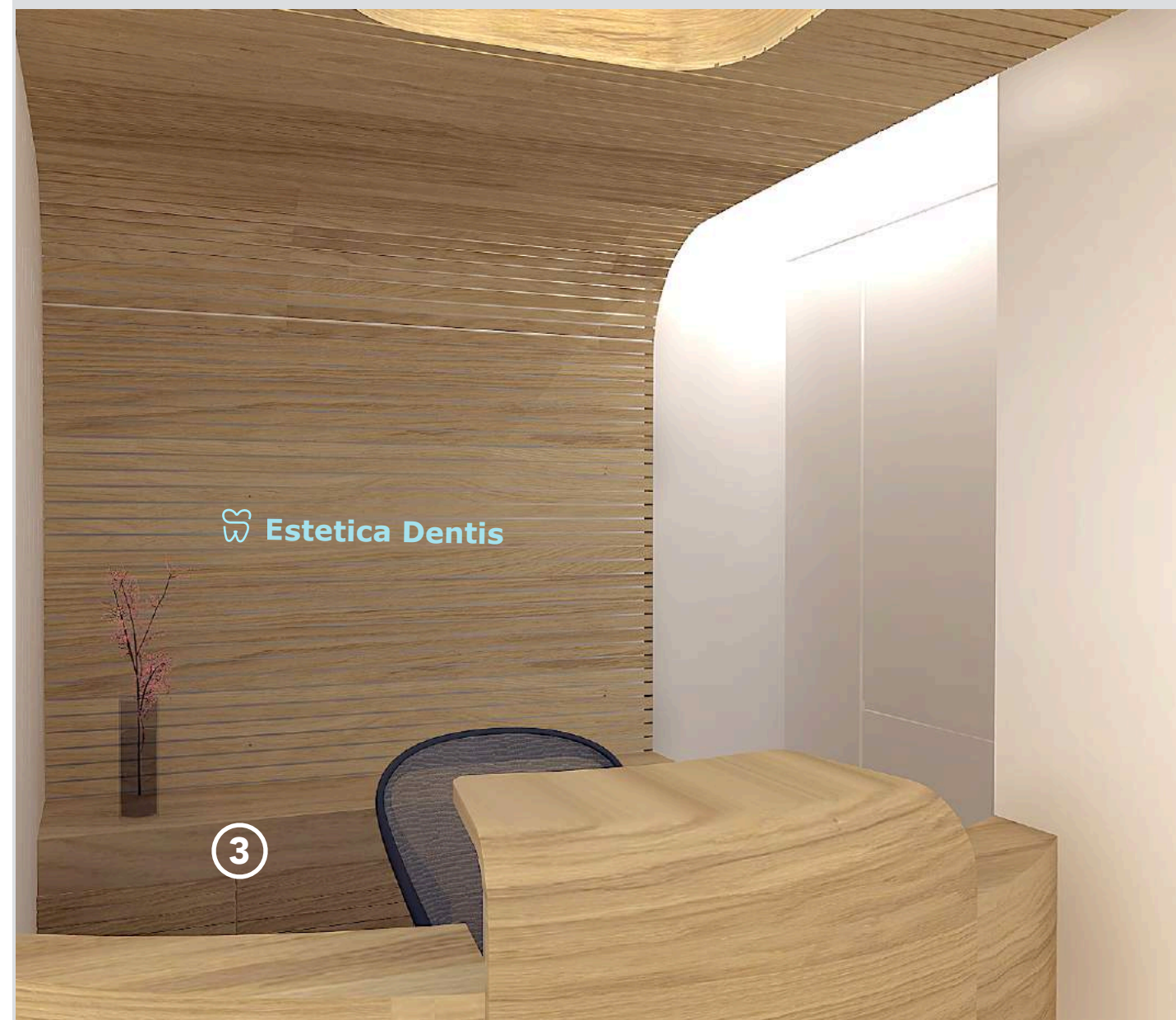
B - SPLIT - TALL FILING CABINET + KITCHENETTE



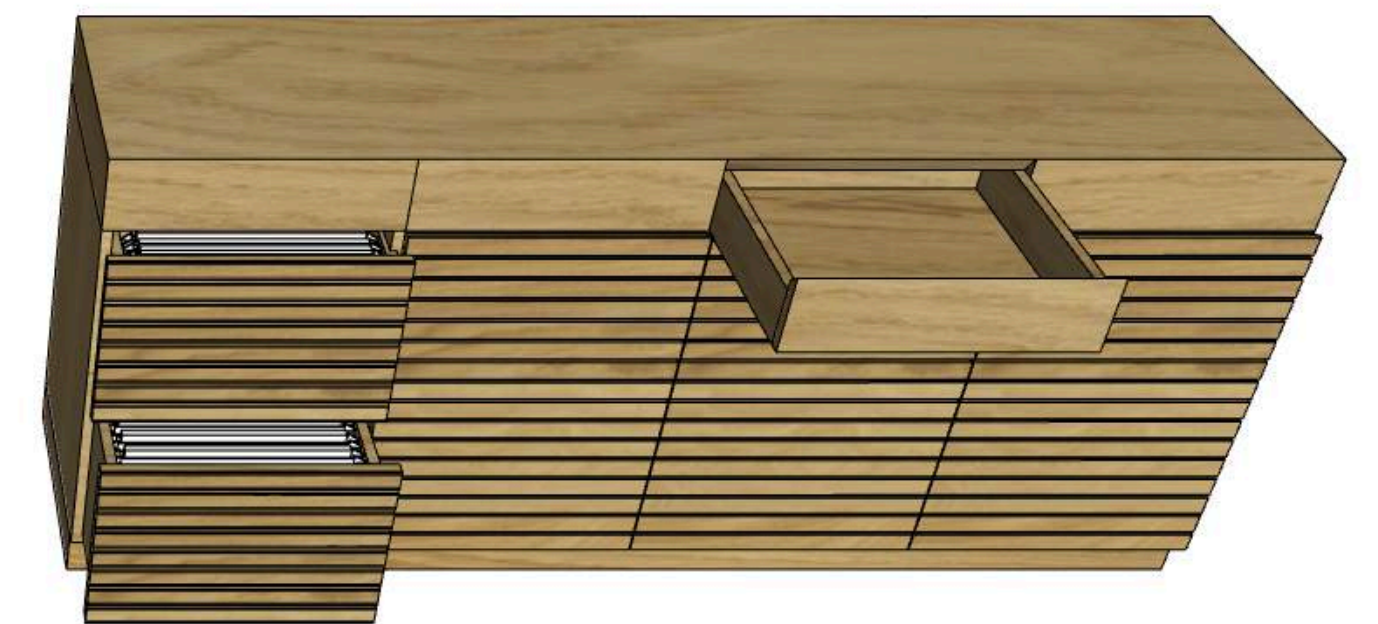


# Dentist Clinic Reception Furniture

## No 3 - Filing Cabinet



A simple slatted wood sideboard style filing cabinet that extends a work surface area and effortlessly blends into the background.







ACME D3  
Interior, Spatial & Furniture Design

## Estetica Dentis Dental Clinic Design

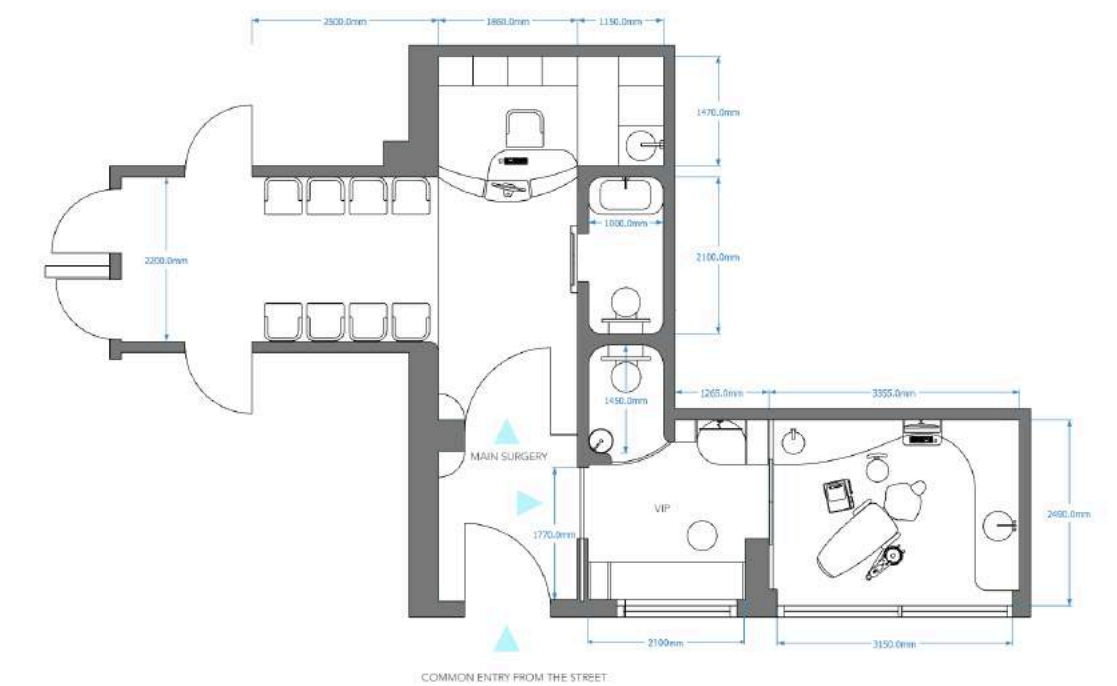
VIP Department  
Option 1



Space designated for the VIP treatment is quite limited in size and naturally divided into two rooms. Despite spatial limitations, small scale spaces, if carefully executed, can leave an impression of intimacy and exclusivity.

In both options VIPs are received in the small reception area where the seating is constructed in the form of a window seat, which is rather simple to build but serves as a practical and unique design element. Visitors and staff would be able to relax in an intimate environment containing TV, reading material and refreshments placed in practical cabinets.

Both options also contain their own restroom as, if the service is to remain discrete, separate facilities are essential.





## Dental Clinic VIP Interior Design

### Option 1

Despite its small scale and function, the space appears inviting.

VIP visitors are greeted in a small reception area, separated from the treatment room by sliding glass doors.

Visitors and staff can relax in an informal environment containing media and refreshments hidden away in sculpted pull-out cabinets.





## Dental Clinic VIP Interior Design

Discrete lighting and curved shapes add much needed softness and calm to a size constricted VIP dental treatment part of the clinic.

Rounding of the room and ceiling corners contributes to the impression of a larger space as our eyes travel across without being interrupted by sharp boundaries and dominant straight lines.

Dental cabinetry is constructed out of Corian, a durable and hygienic material increasingly used in medical industry, which also allows more sculpted shapes. It also looks great.

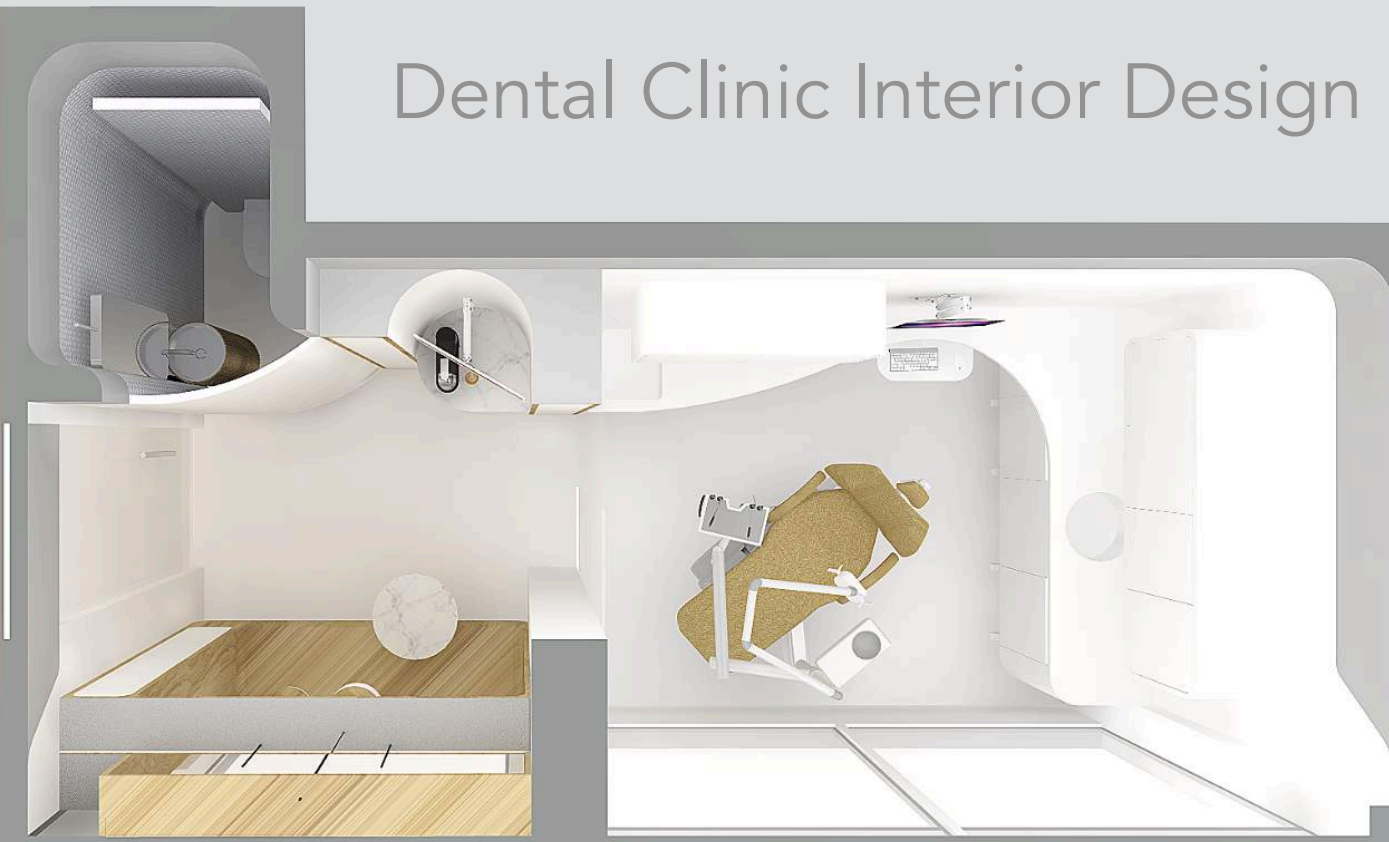








## Dental Clinic Interior Design



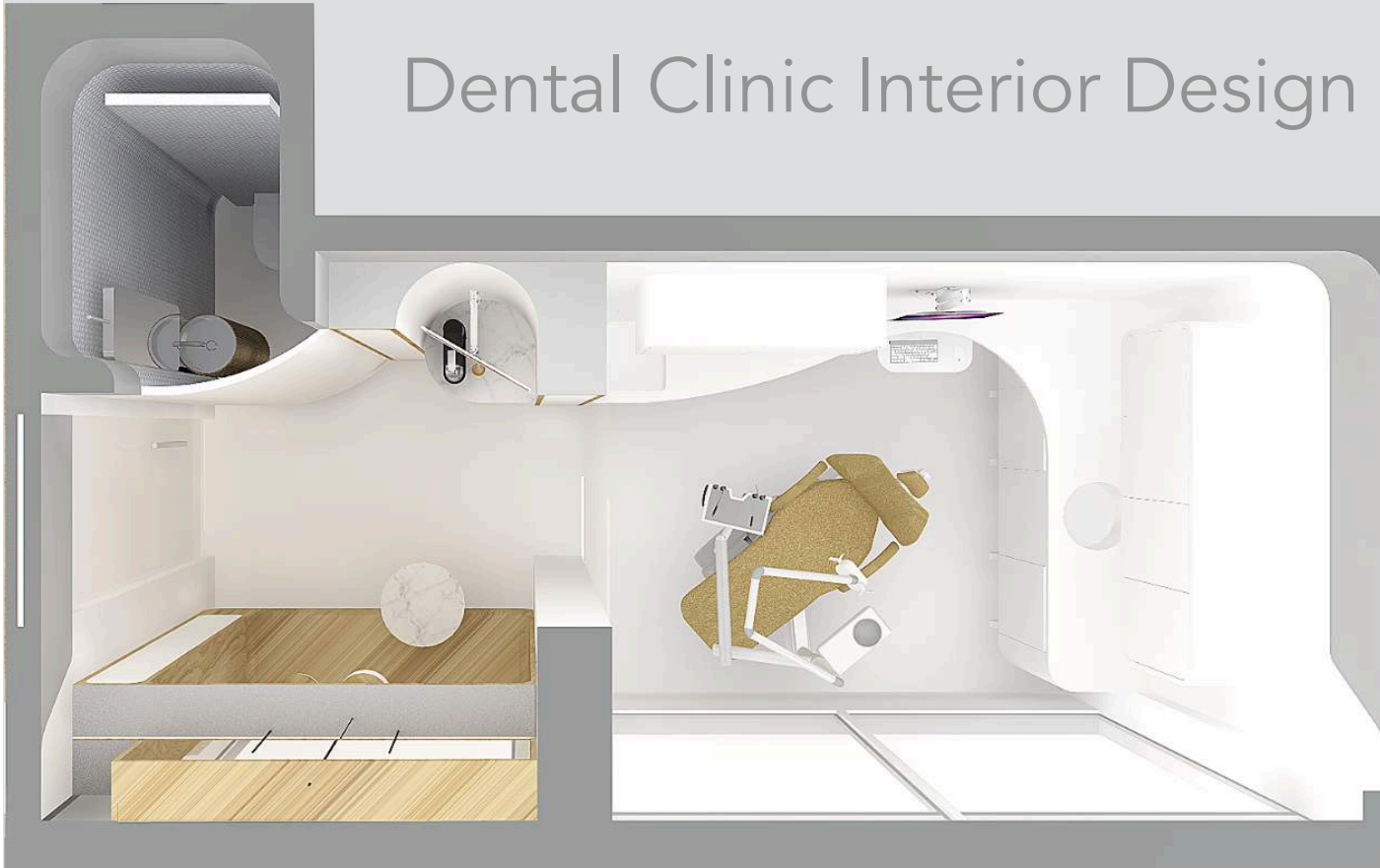
## Reception Room

In this option, both VIP and the rest of the clinics share a common street entry. Main feature in the reception area is a window seat containing a pull-out coat cabinet, whilst a large frosted glass window provides privacy and soft lighting during daytime.





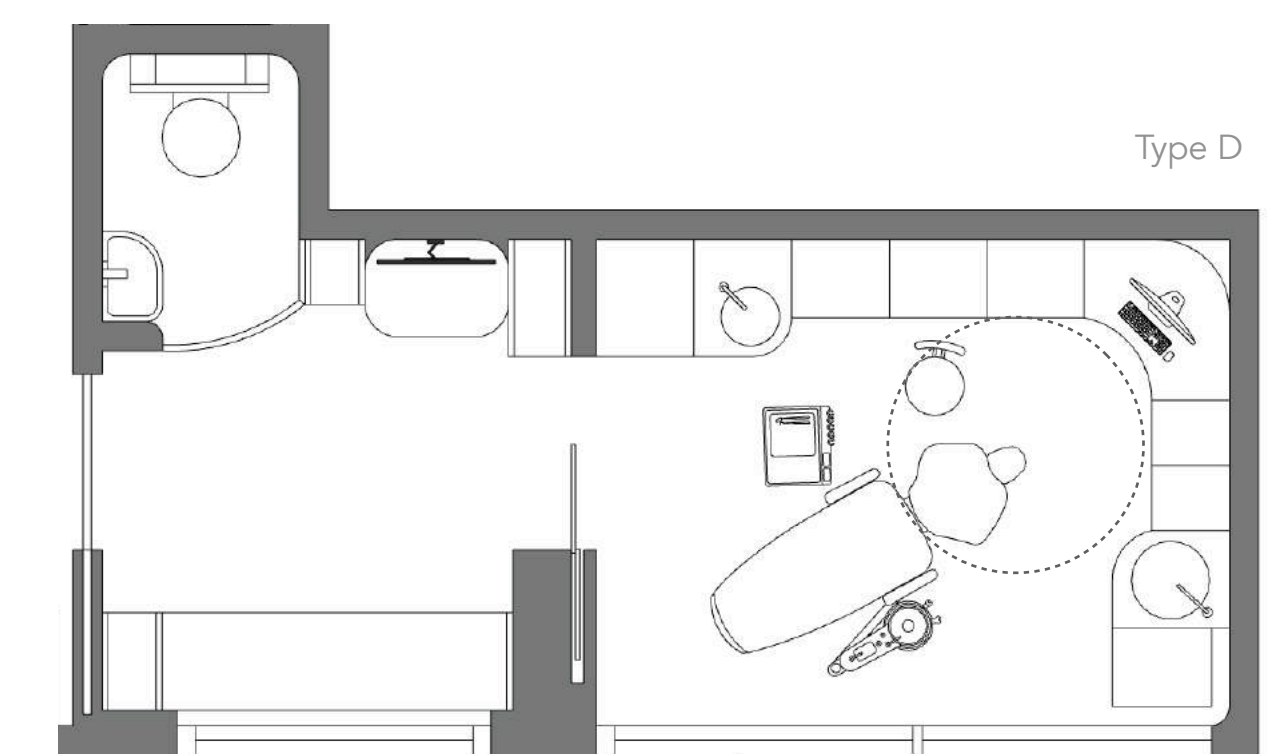
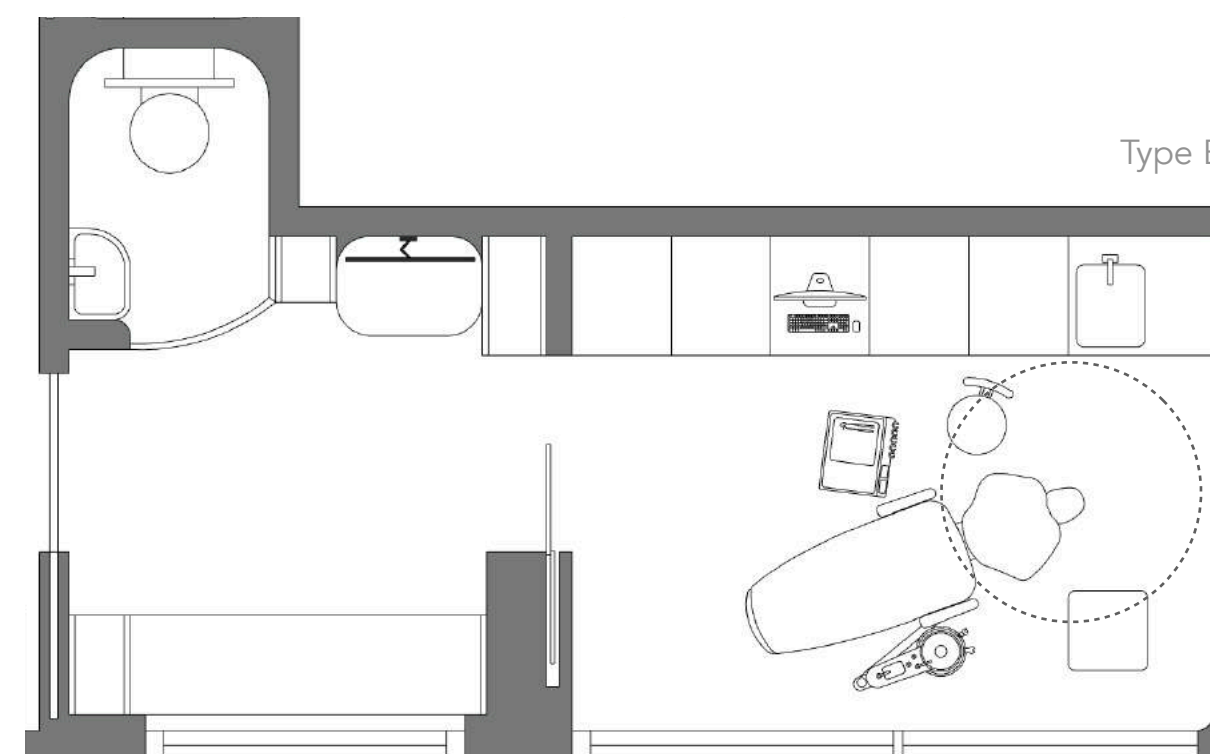
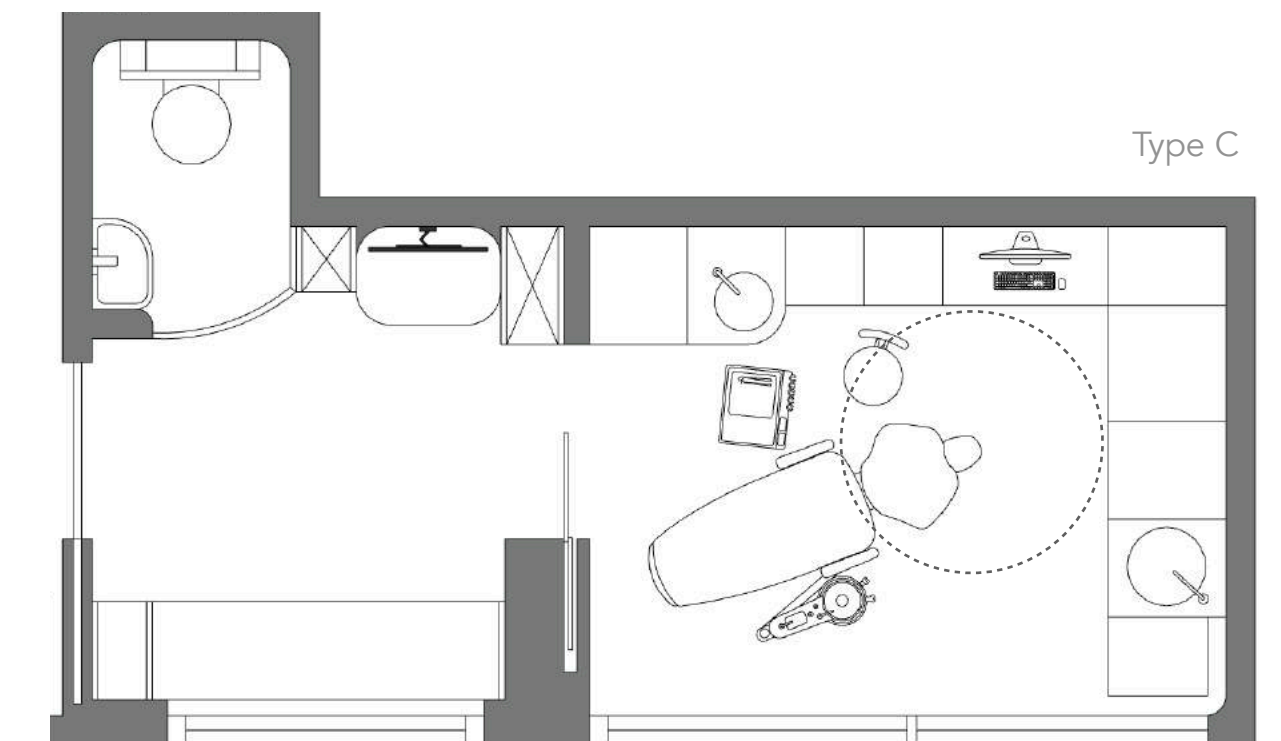
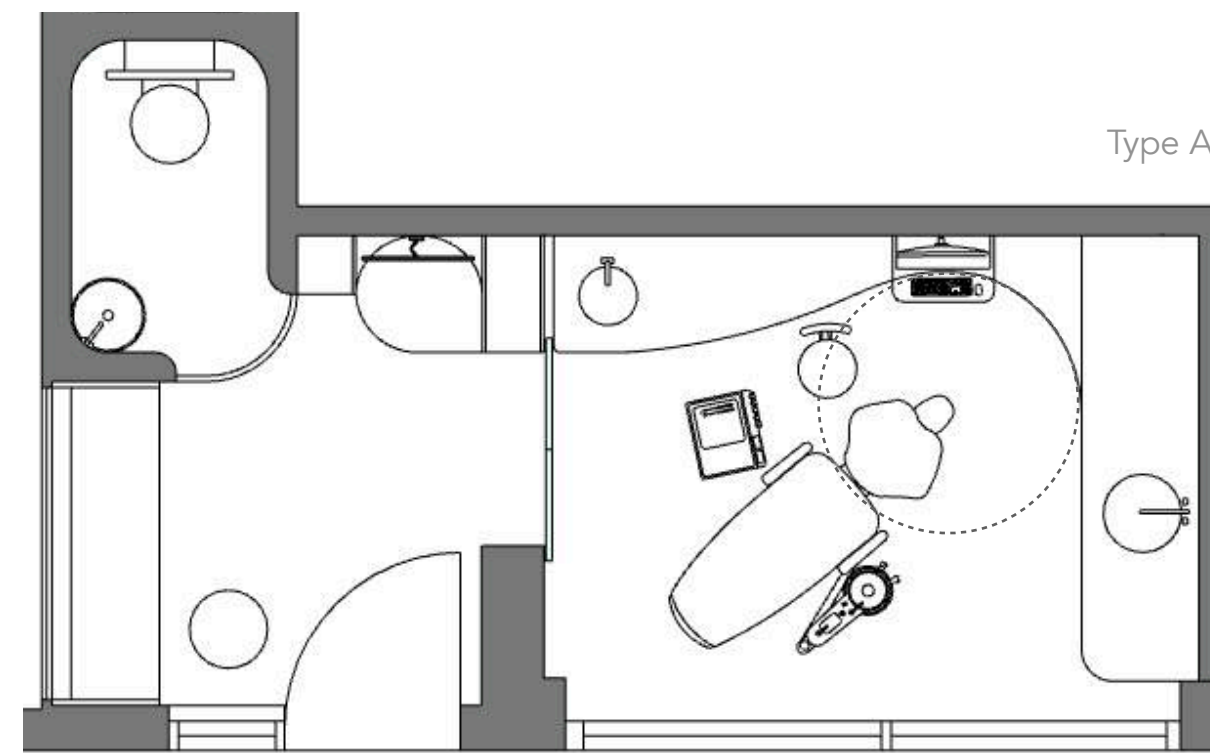
## Dental Clinic Interior Design



## Dental Cabinetry Layout

There are different ways to set up the cabinetry for the dental treatment room and it greatly depends on personal requirements. Type A is shown in both options as it meets ergonomic rules, standards and guidelines for dental workspace:

- 650mm unobstructed space around the chair's head support, which allows staff to move around freely and easily reach the necessary equipment
- easily reached computer for a dentist
- dentist's small hand-washing sink
- large sink for nurse's tasks
- more drawers for the dentist
- more working surface area and general storage for the nurse
- cabinet(s) on wheels







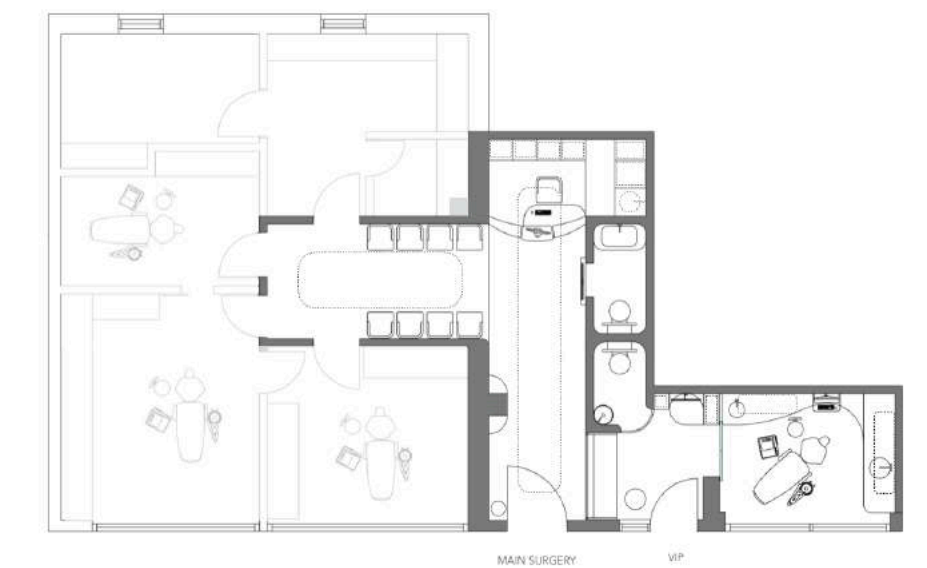
ACME D3  
Interior, Spatial & Furniture Design

## Estetica Dentis Dental Clinic Design

VIP Department  
Option 2

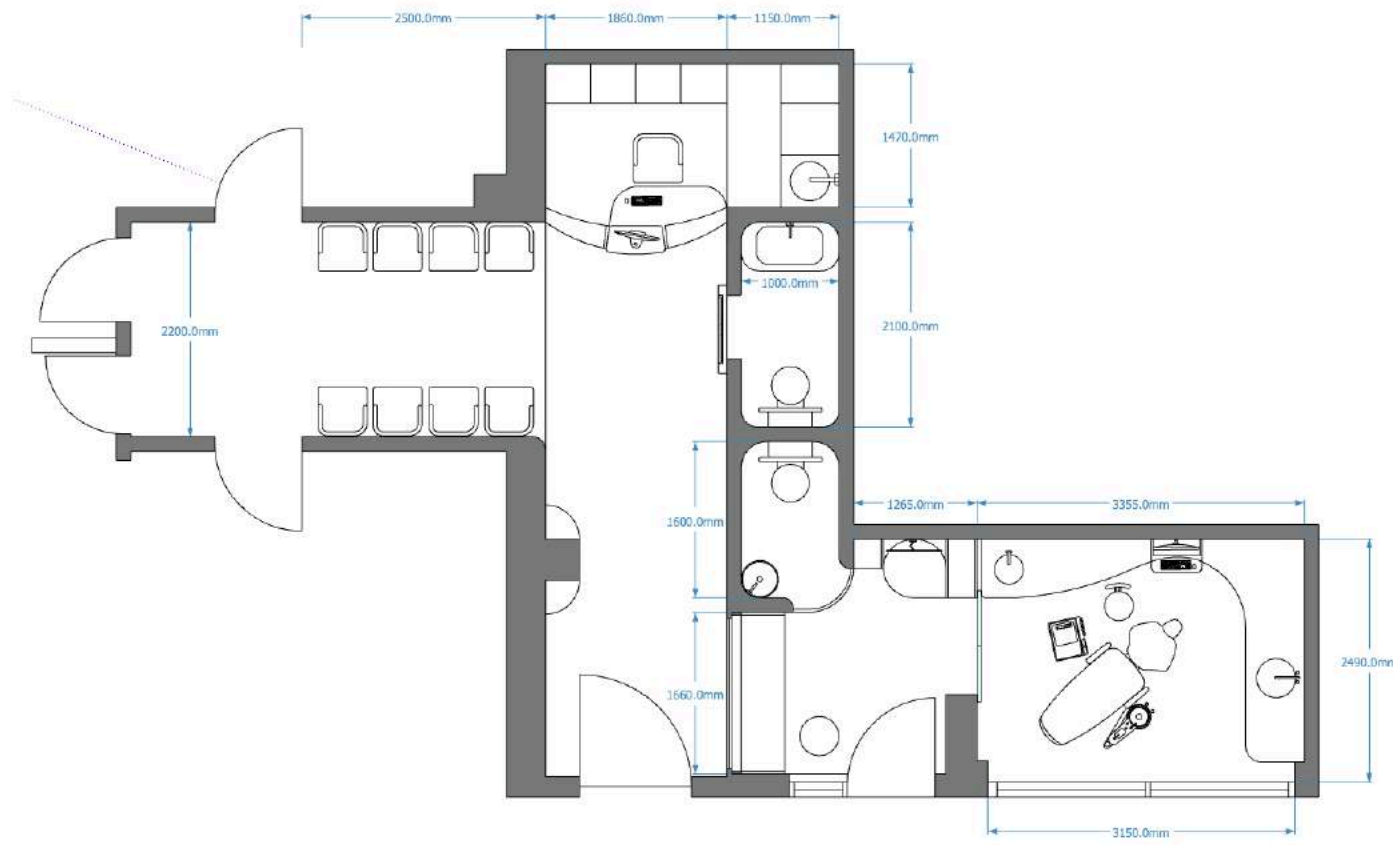


VIP dental clinic department in this option has a separate entrance from the street providing a complete privacy for clients. They are greeted in an intimate and informal reception area where they can enjoy refreshments, read or watch TV during treatments that require waiting time. Both options for the VIP area share the same design and layout for the dental treatment / surgery room.



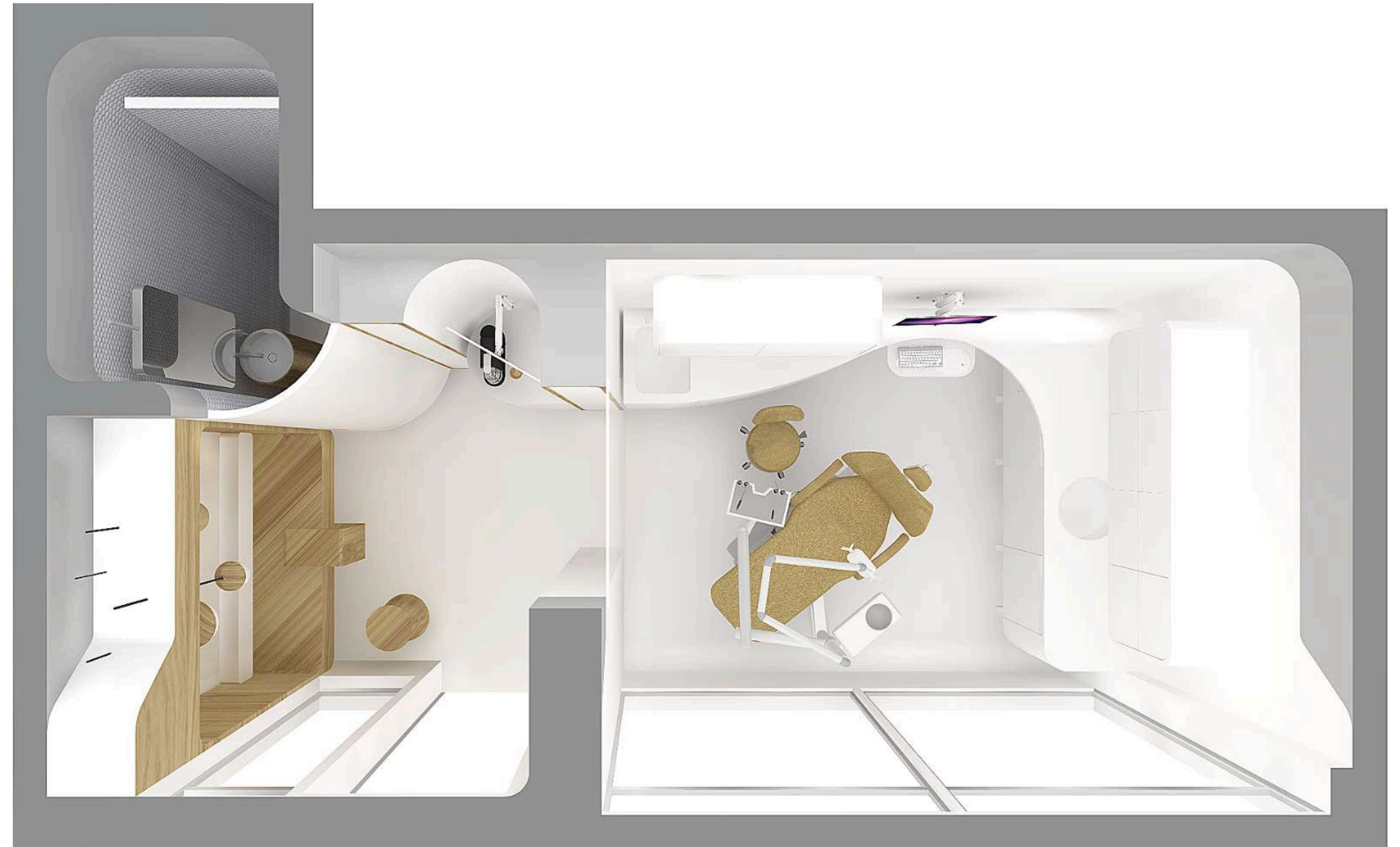


# Dental Clinic Interior Design



## VIP Department Option 2

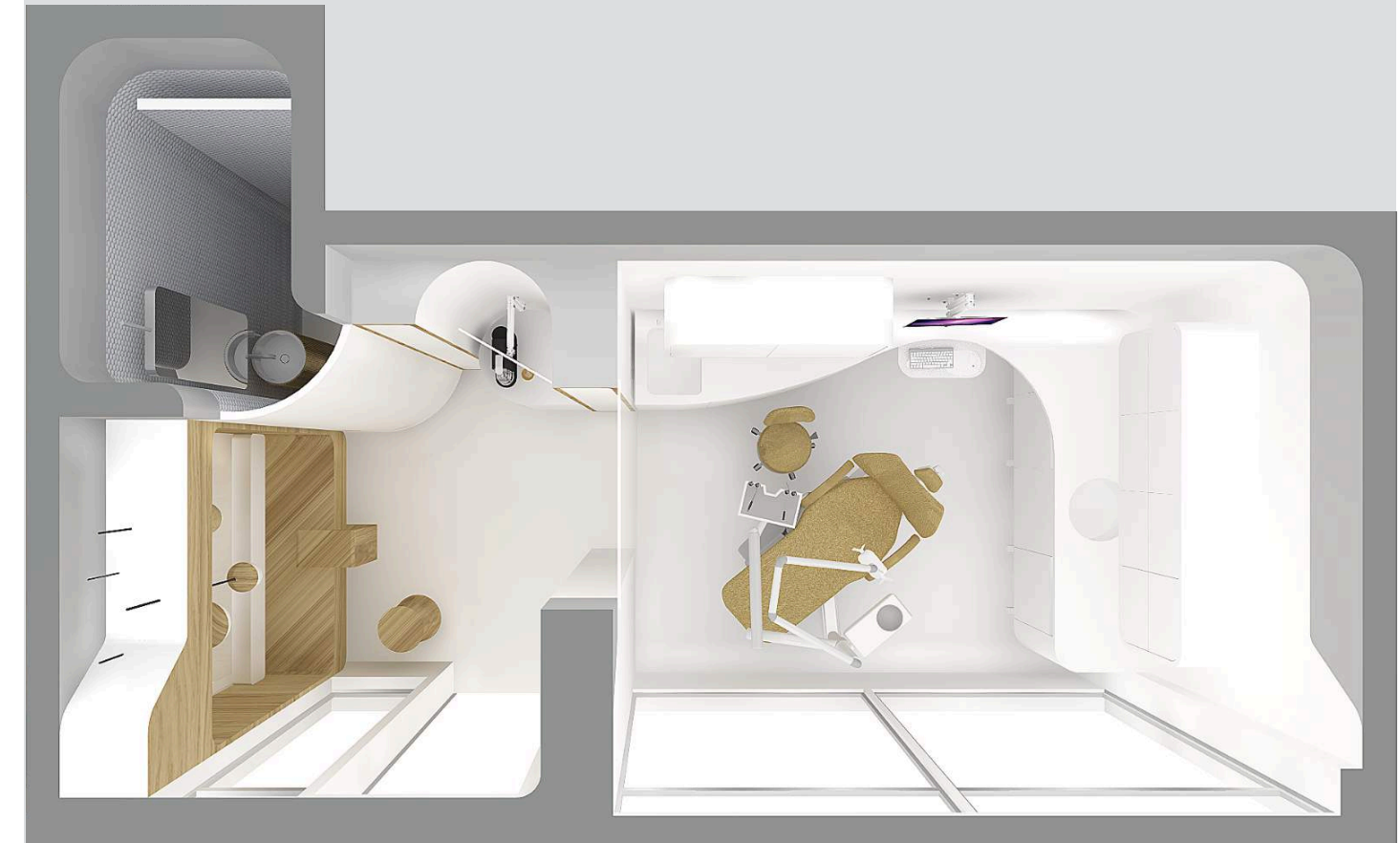
In this option, VIP part of the clinic has its own street entrance giving a complete privacy to VIP clients.







## Dental Clinic VIP - Interior & Furniture Design



## Reception Room

In this option VIP dental office has its own entry from the street. Window seat replaced the previous tech lab entry and its frosted glass back provides privacy, additional light to both the VIP waiting room and the main clinic entry hall. Undulating ceiling hides installations and raises towards windows to allow natural ventilation and daylight.



## Dental Clinic VIP - Interior & Furniture Design



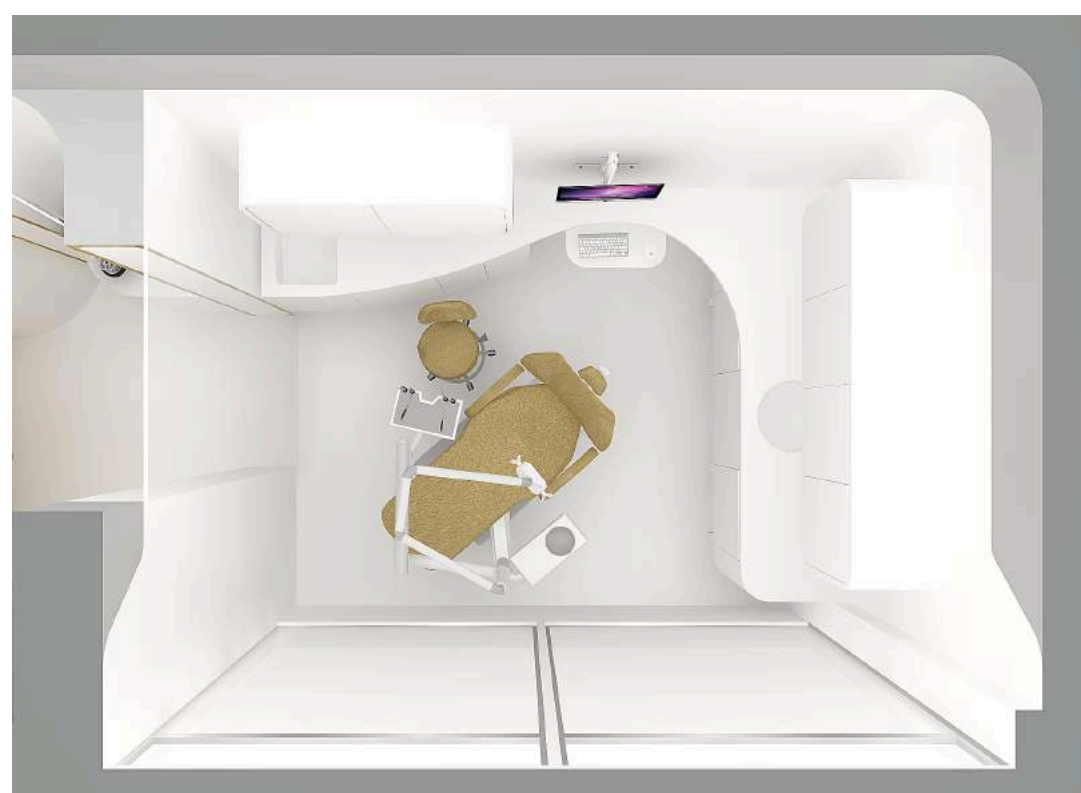
### Reception Room Cabinets

To keep the small sized reception area airy and uncluttered, pull-out sculpted cabinets are a great way to disguise storage.





## Dental Clinic VIP - Interior & Furniture Design



### VIP Dental Treatment Space

Both VIP options share the same small but ergonomically designed dental treatment room

Dental cabinetry is constructed out of Corian, a durable and hygienic material increasingly used in medical industry. It also looks great and is almost limitless in terms of shaping possibilities.









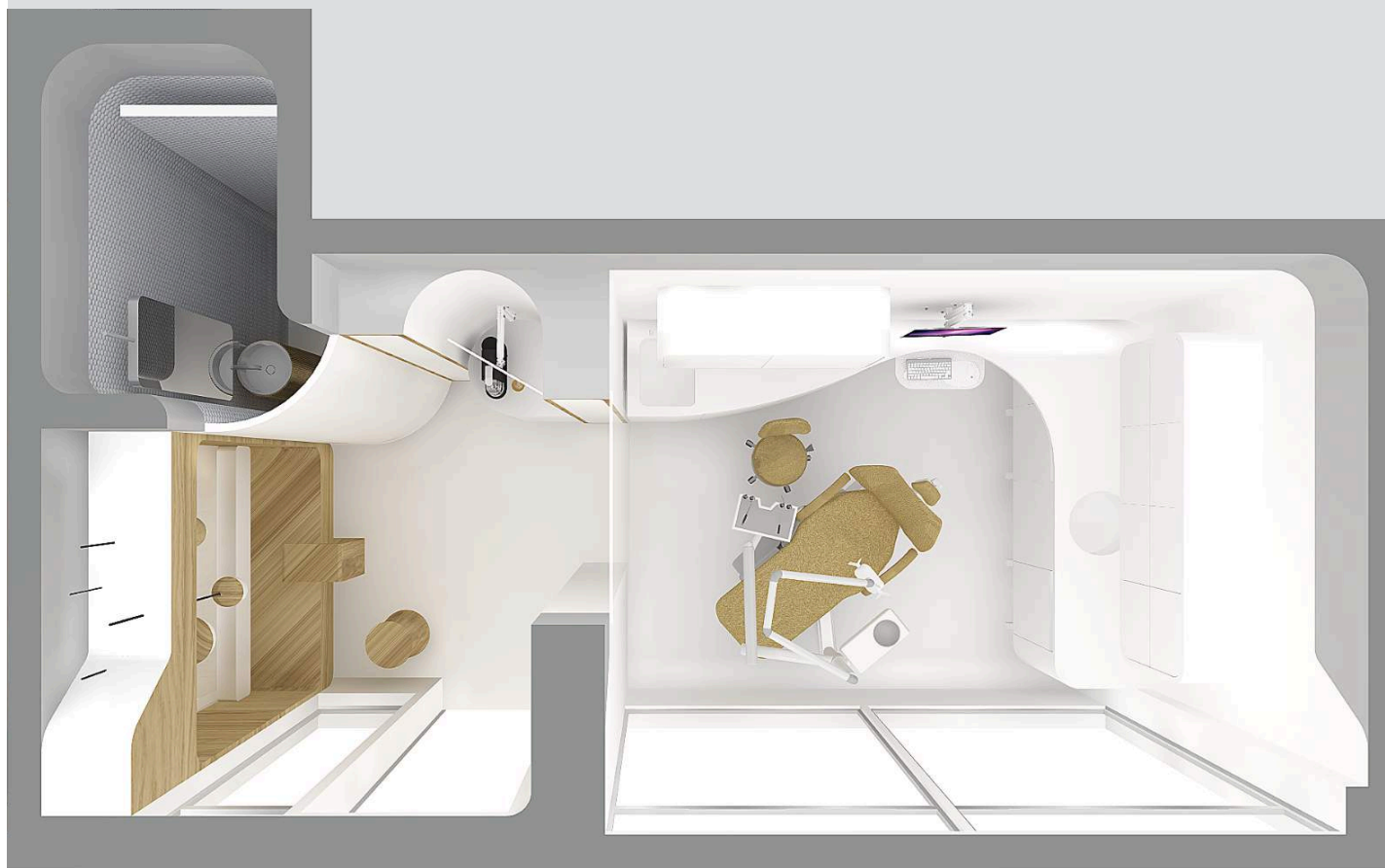








## Dental Clinic VIP - Interior & Furniture Design



### Restroom

Tiny but mighty restroom with curved walls and fittings is softly lit and enriched by natural materials.

