



## Minions Bunk Beds

Children Bedroom  
Themed Furniture



Bunk beds are the tried and tested way to save space in small bedrooms. They come in all shapes and sizes, can be plain looking, themed and colourful, have integrated elements like desks, storage, wardrobes, sofas,... combinations are never-ending. In all cases safety is of the greatest importance so they have to be tested to established standards of a given country. In this case we have two siblings who share the same bedroom, brother 10 & sister 5, who luckily like spending time together and share some common interests. We were asked to create an active/sleeping bunk bed concept for their bedroom based on their favourite characters - the Minions. We also kept in mind a well established fact that children at some point find new interests and get bored with existing ones so we designed a modular and flexible composition of elements that can be upgraded or changed.



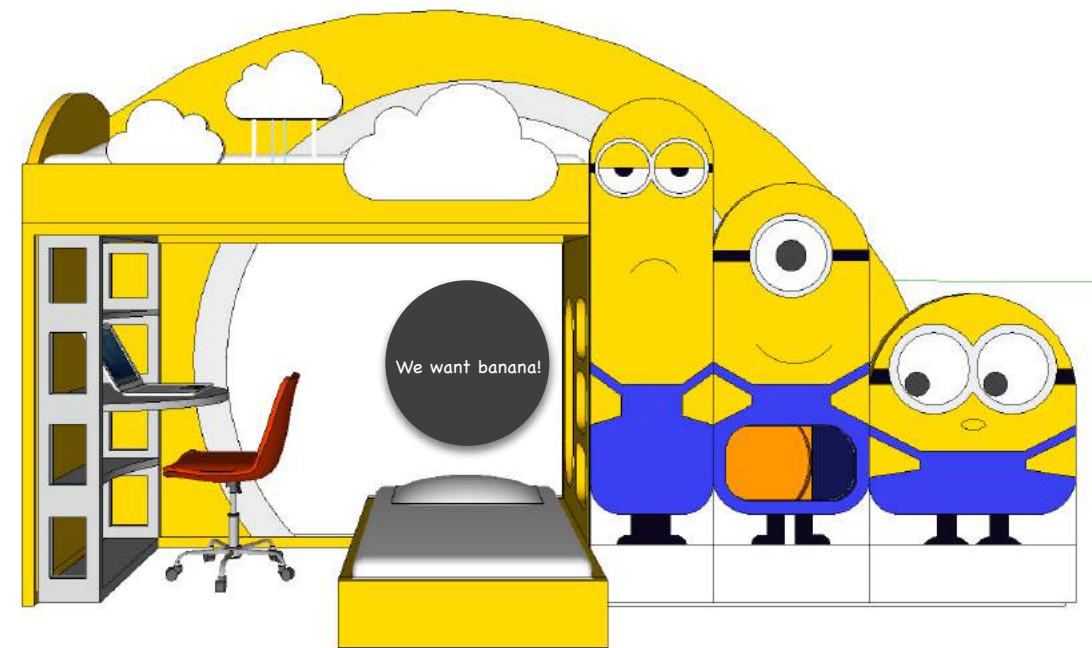
# Children Bedroom Furniture: Brief

'Two siblings, a boy (10) and a girl (5) share a room and are in need of new furniture: an activity bunk bed. We have seen hundreds of them, simple and complicated, playful and boring, themed and not, but still haven't found anything that would match their requirements (ridiculous amounts of energy) or personalities. The room is very simple, rectangle shaped. There is a large wardrobe which, depending on the scheme, might be changed or removed. One thing they are both crazy about is Minions - not sure in what way you can work around this idea but we are looking for an active (slides, hiding places, etc.) bunk bed based on Minions characters.'

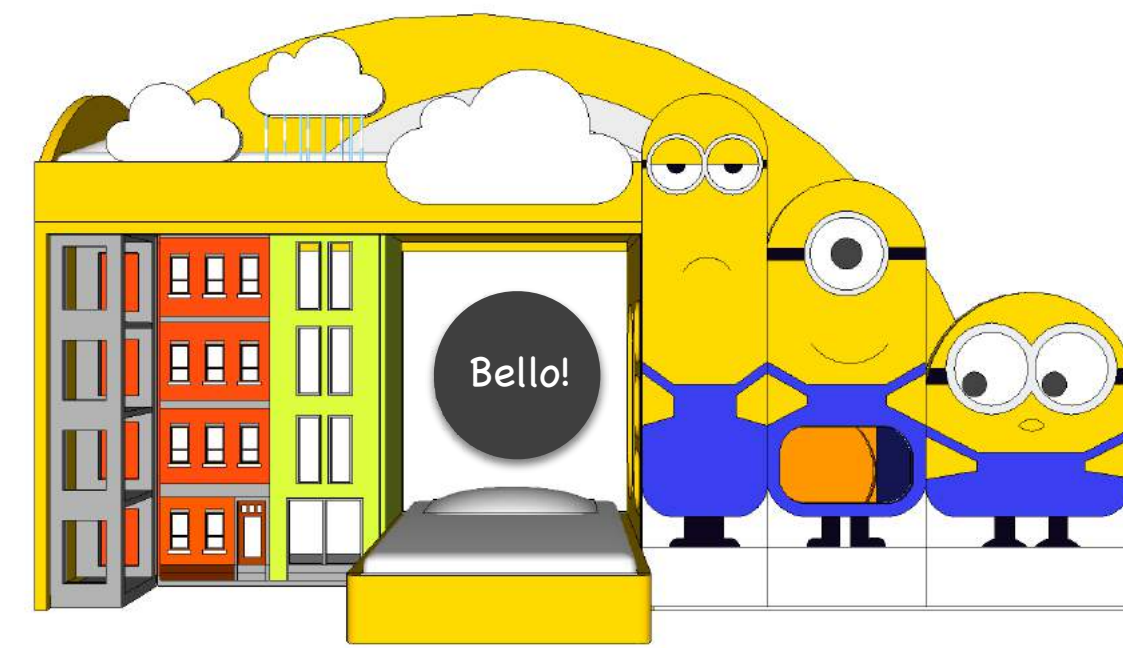
# Concept

A space saving and modular bunk bed with storage solutions and active components that can be picked and arranged as suited. Each option contains basic elements: short and long beds and a supporting frame. Slide, stairs/drawers, desk, bookshelf, mini wardrobe and Minions guard/banister are additional elements to chose from and can be orientated in two ways (as shown on supporting illustrations). Minions dictated a colour scheme based on primary colours creating a gender neutral environment that feels like it belongs to both siblings. The composition is truly bright and colourful so the rest of the room should be kept neutral and serve as a backdrop. Existing (or new) wardrobe position will depend on the orientation of stairs and slide as shown on the plans below.

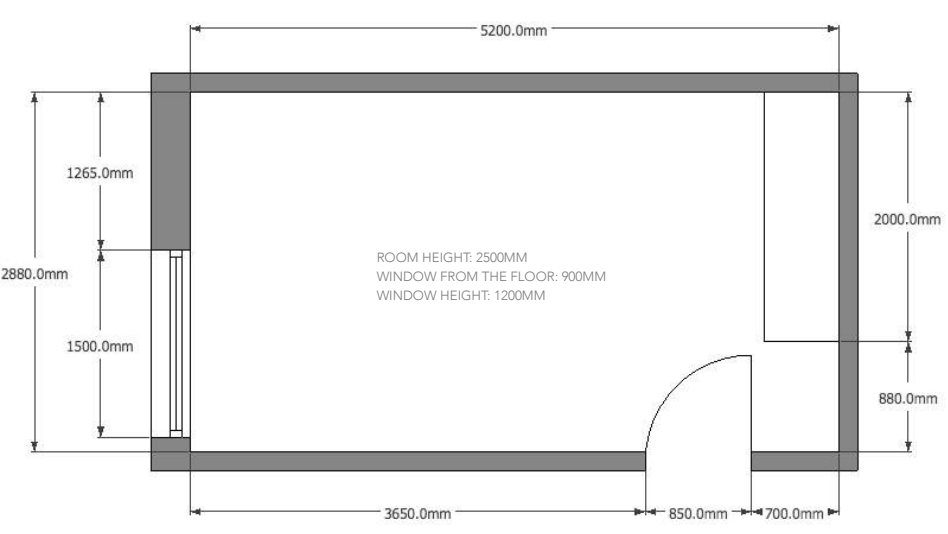
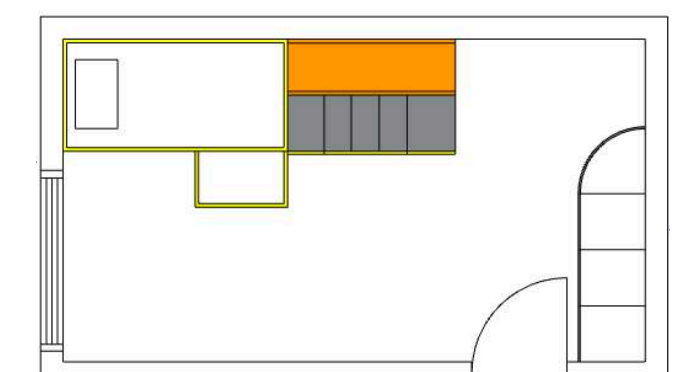
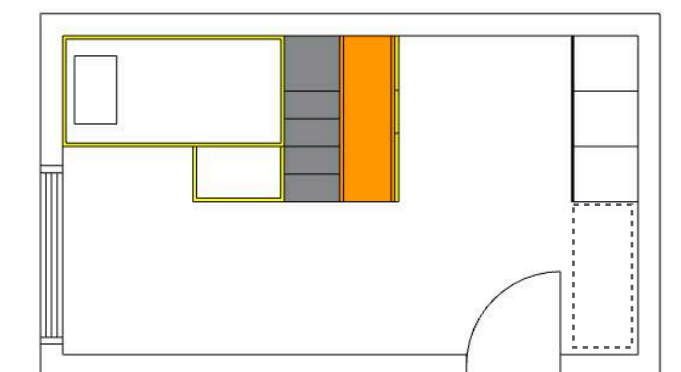
Four options are split into two groups:  
 Group 1 contains a desk  
 Group 2 contains mini wardrobes and bookshelf



Group 1 - Integrated Desk



Group 2 - Integrated Mini Wardrobes & Bookshelf



# Minion Bunk Bed Components Options

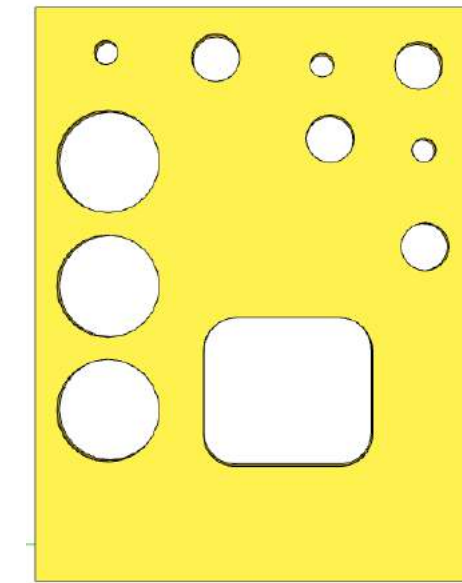
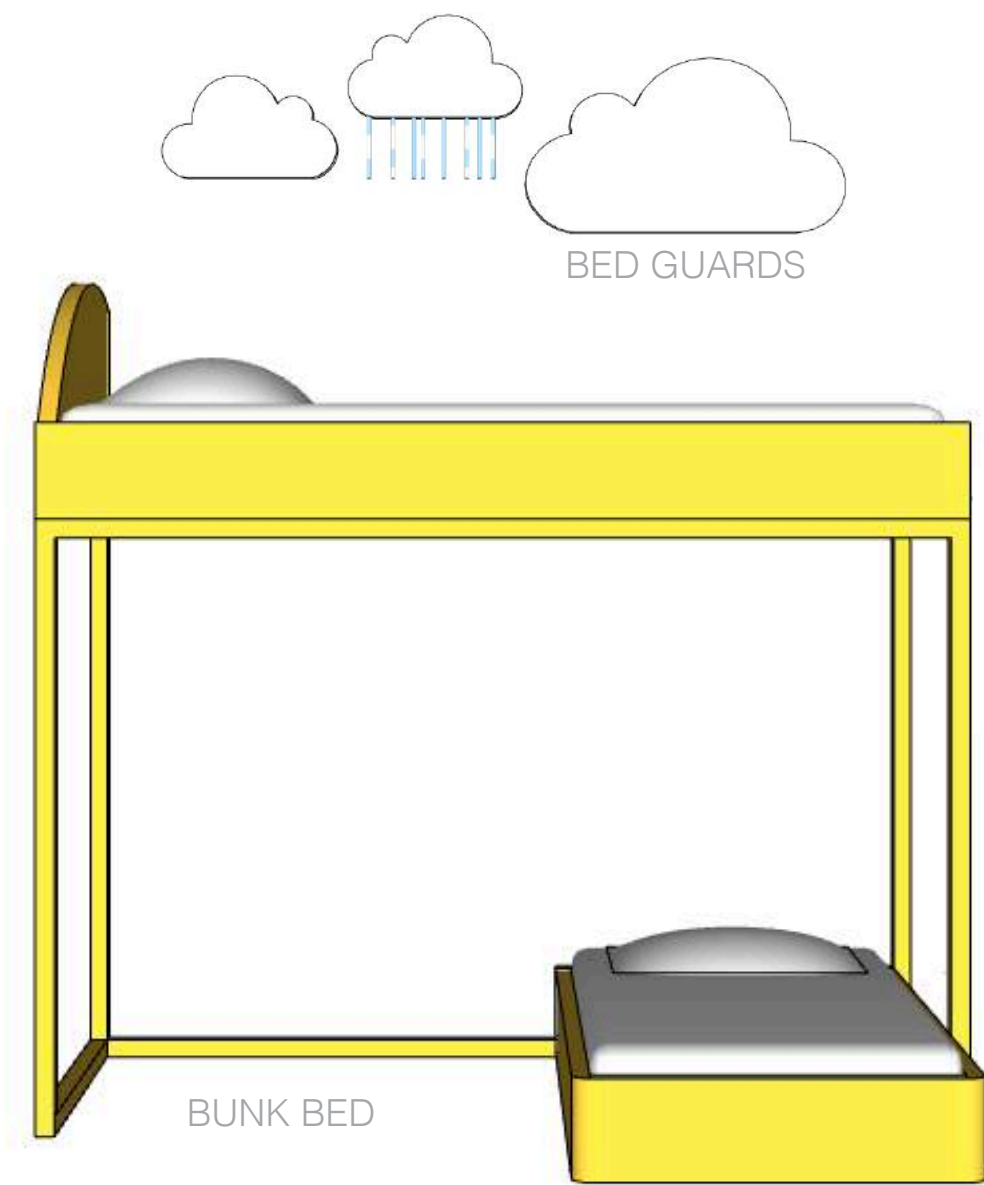


DESK/SHELVES

OR

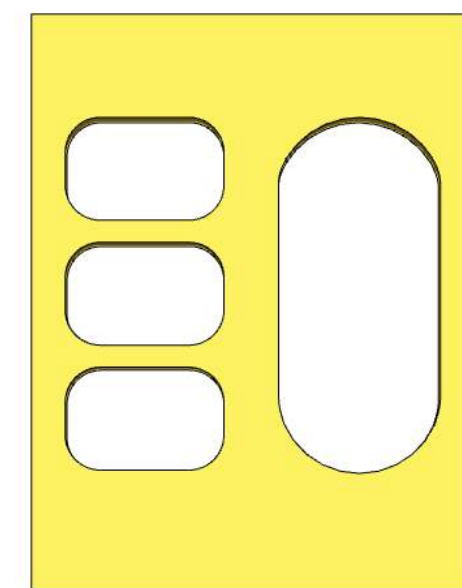
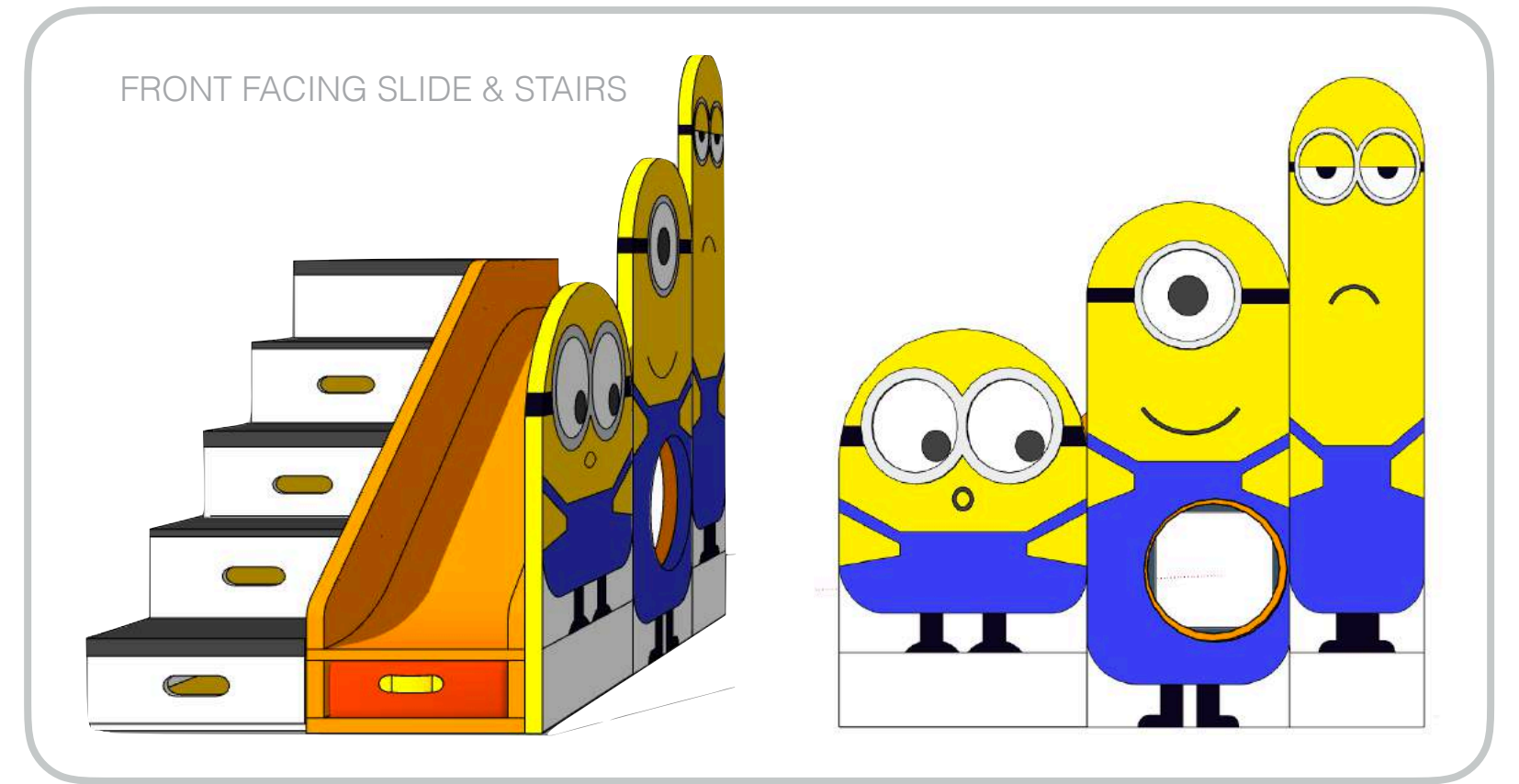


WARDROBE/BOOKSHELF



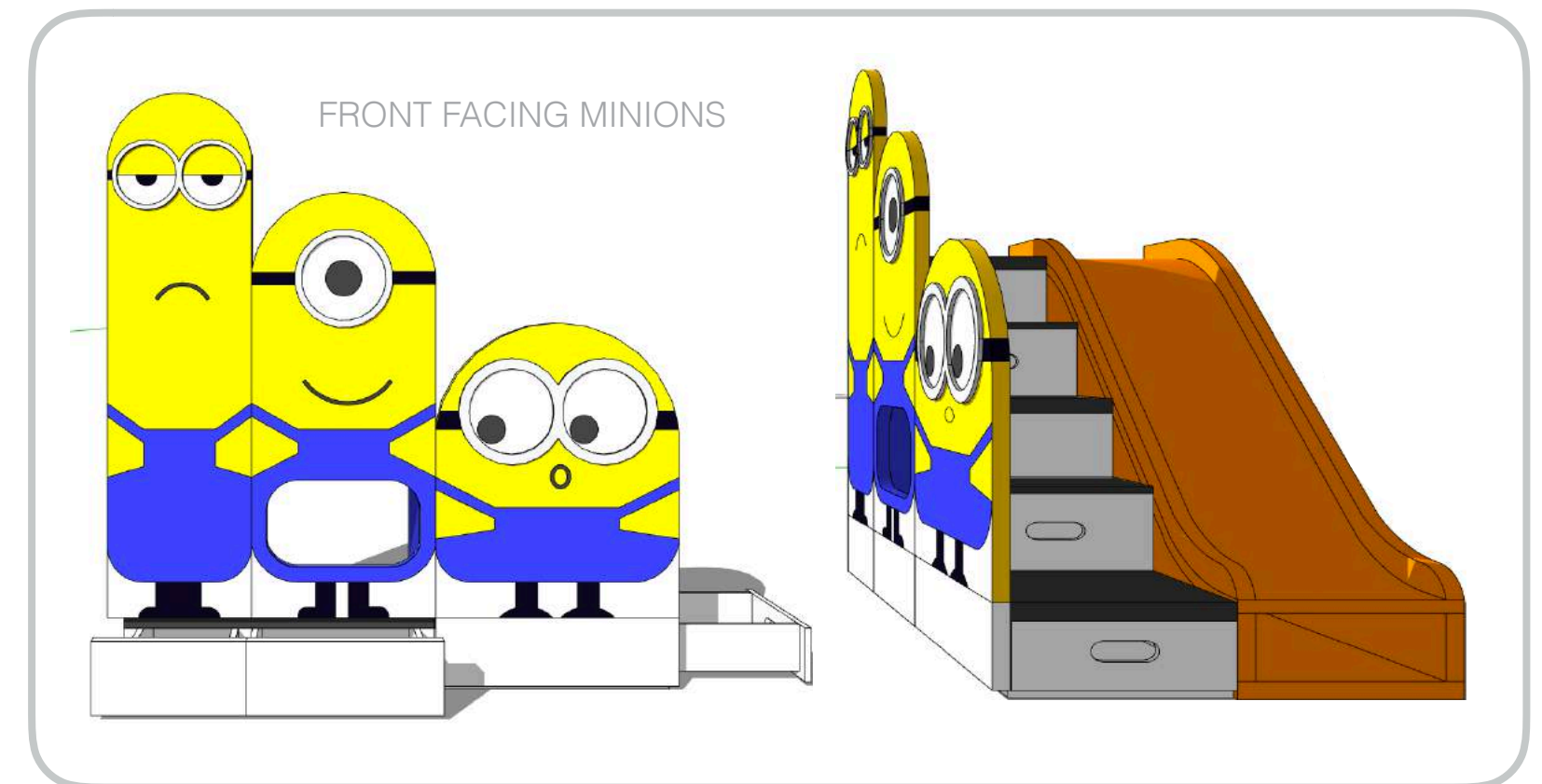
BEDSIDE PANEL FOR FRONT FACING SLIDE & STAIRS

+



BEDSIDE PANEL FOR FRONT FACING MINIONS

+

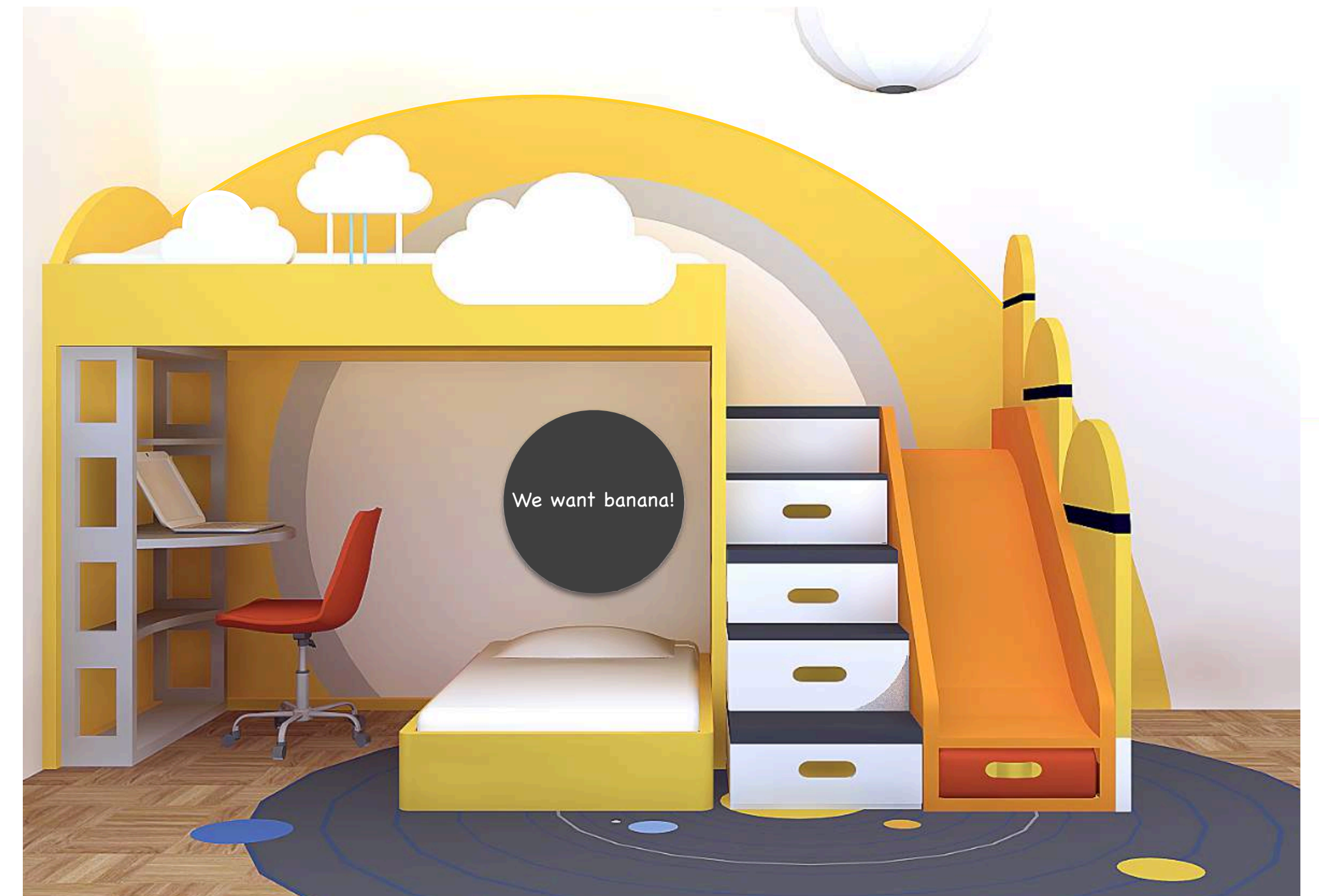




Group 1 - Integrated Desk



Option 1A:  
Integrated Desk &  
Front Facing Minions



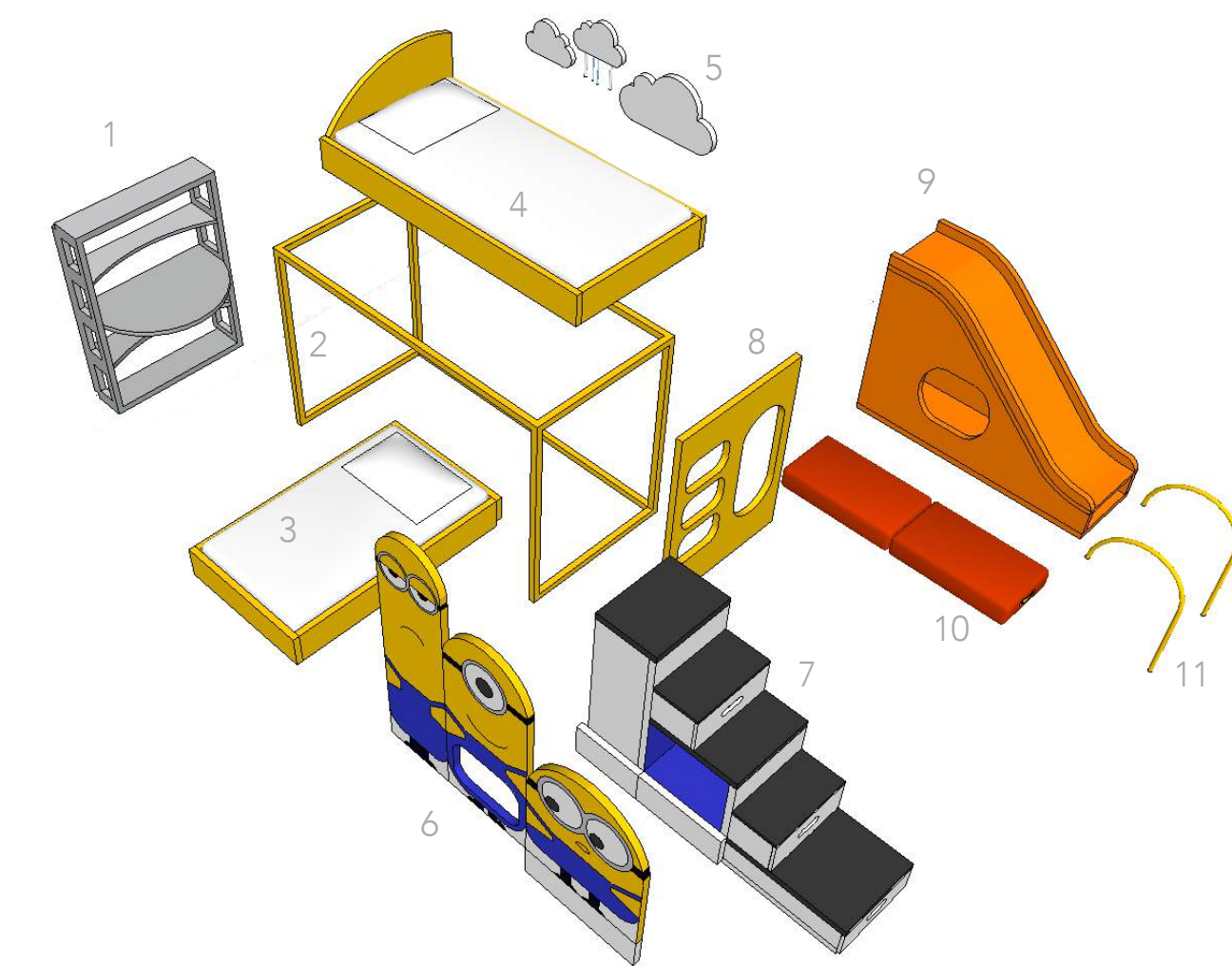
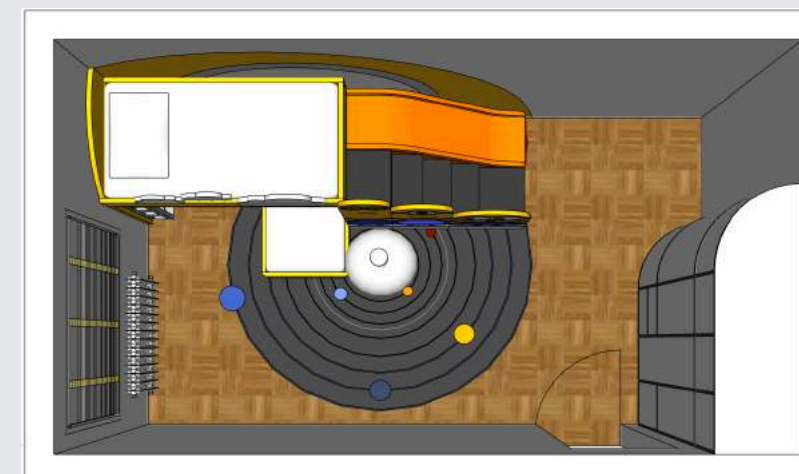
Option 1B:  
Integrated Desk &  
Front Facing Stairs & Slide



Option 1A:  
Integrated Desk &  
Front Facing Minions



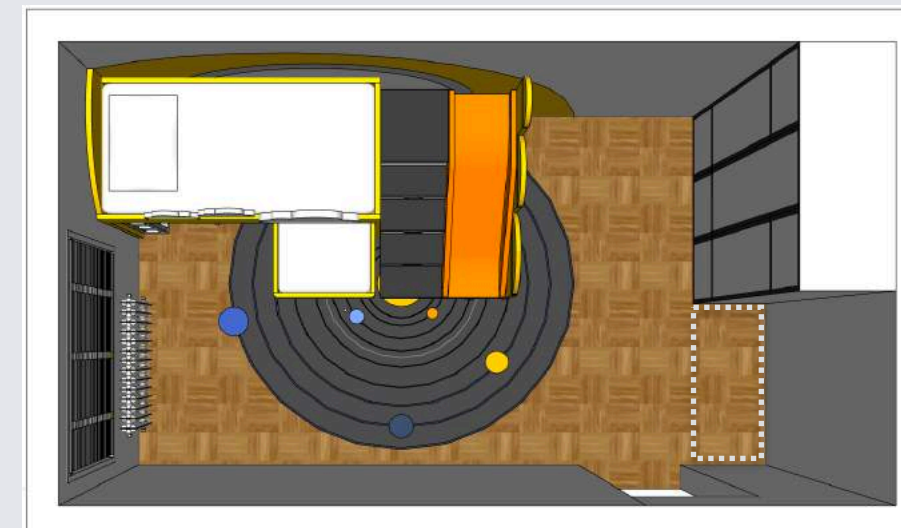
Integrated desk frees up space in the rest of the room that would be otherwise needed to accommodate it. This way siblings can decide which remaining area they can claim ownership for themselves. Slide requires landing area and its orientation, along with the stairs, dictates the main wardrobe position. Panel (No 8) next to small bed contains opening for shelves and a large entry for slide tunnel which should be enclosed with a door if a child is a restless sleeper.



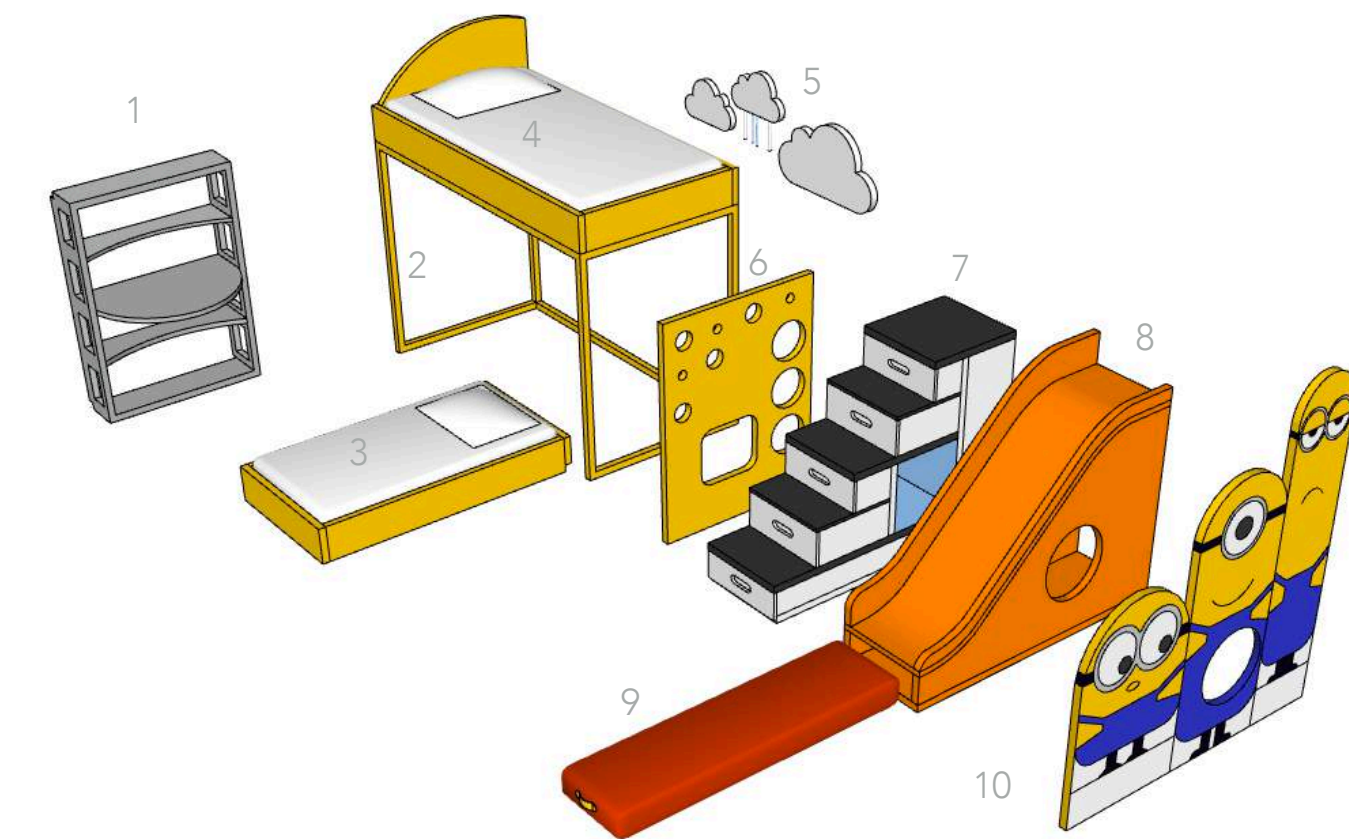
1 - DESK, 2 - FRAME, 3 - SMALL BED, 4 - LARGE BED, 5 - BED GUARDS, 6 - MINIONS PANEL, 7 - STAIRS/ DRAWERS, 8 - SHELVING AND TUNNEL PANEL, 9 - SLIDE, 10 - PULL-OUT SLIDE CUSHION, 11 - OPTIONAL RAILS



Option 1B:  
Integrated Desk &  
Front Facing Stairs & Slide



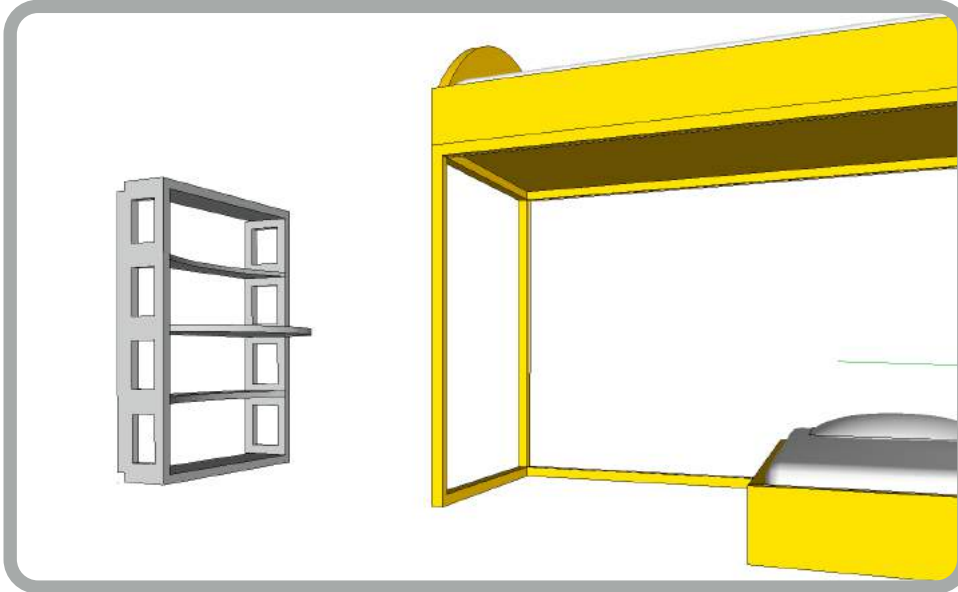
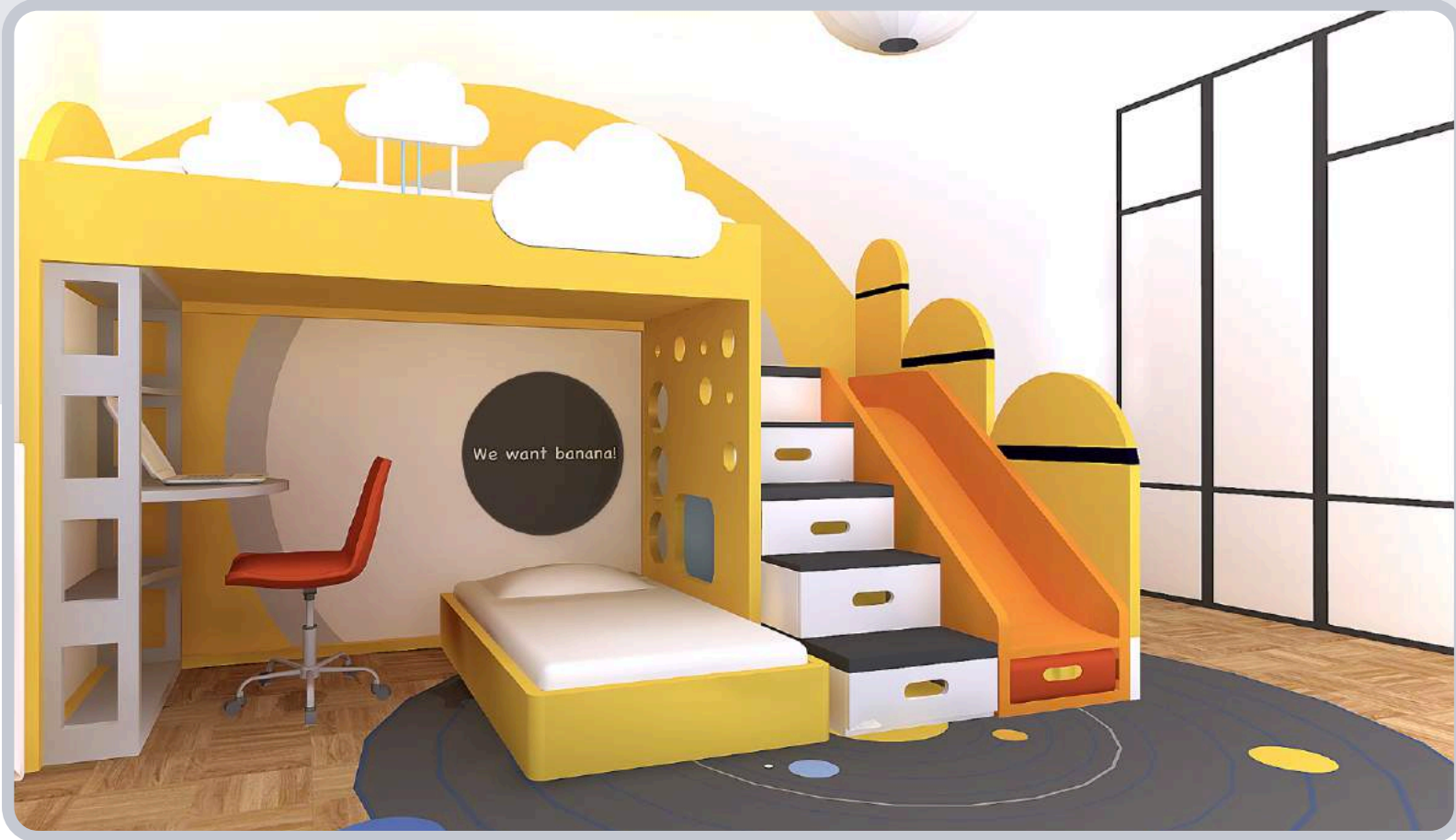
With front facing slide and stairs/drawers, large wardrobe can be extended across the whole wall and provide a truly generous storage.



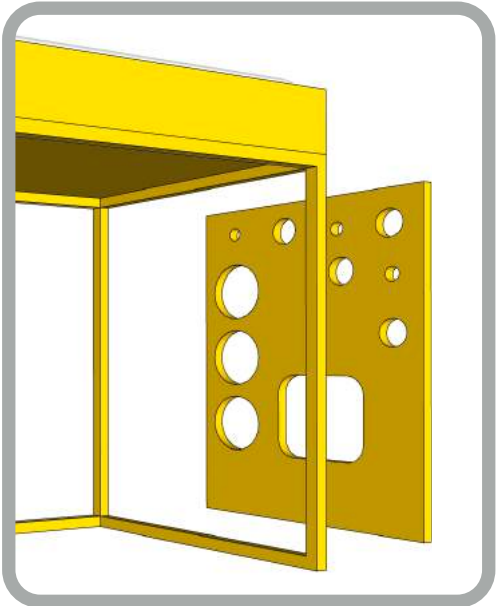
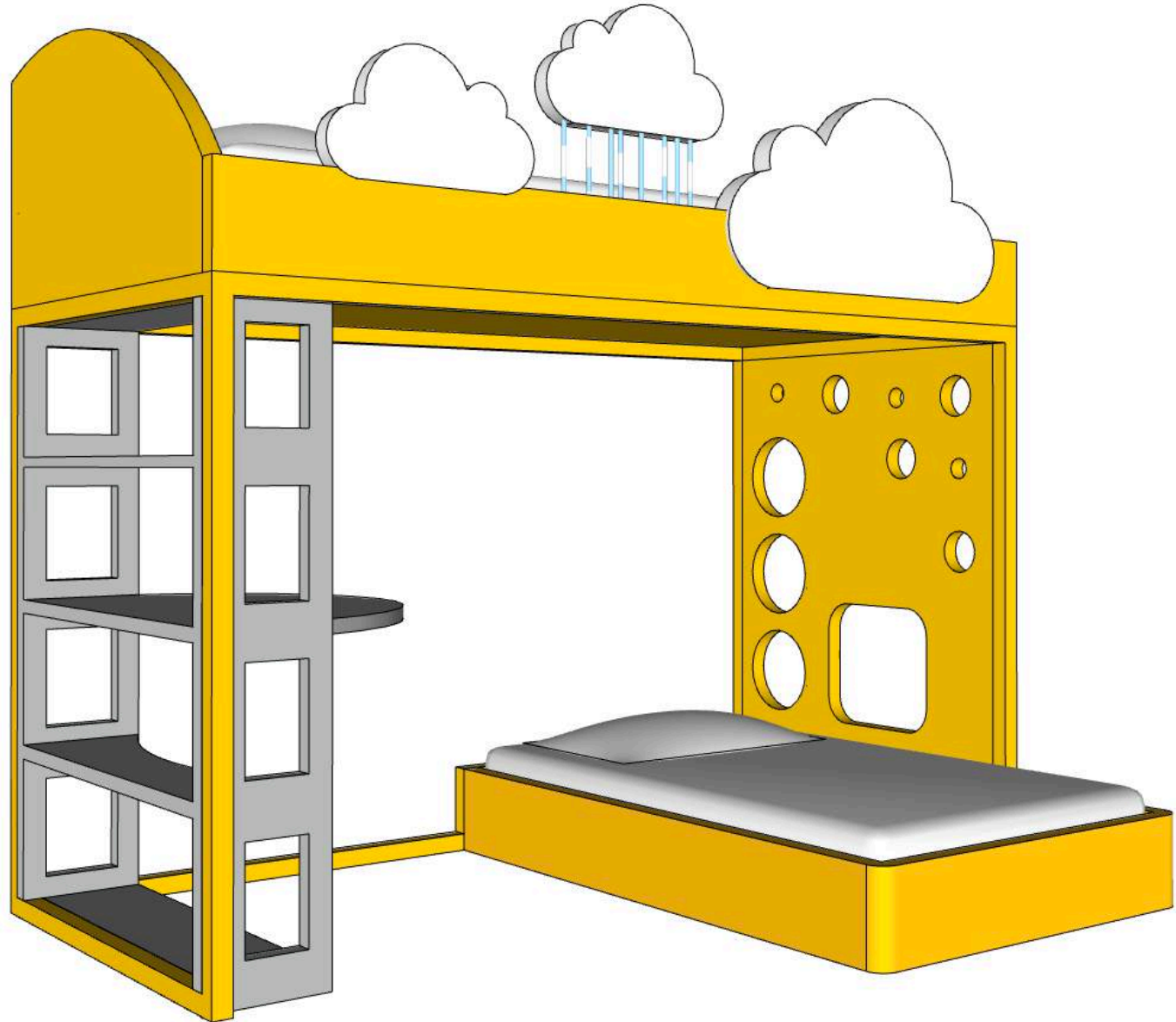
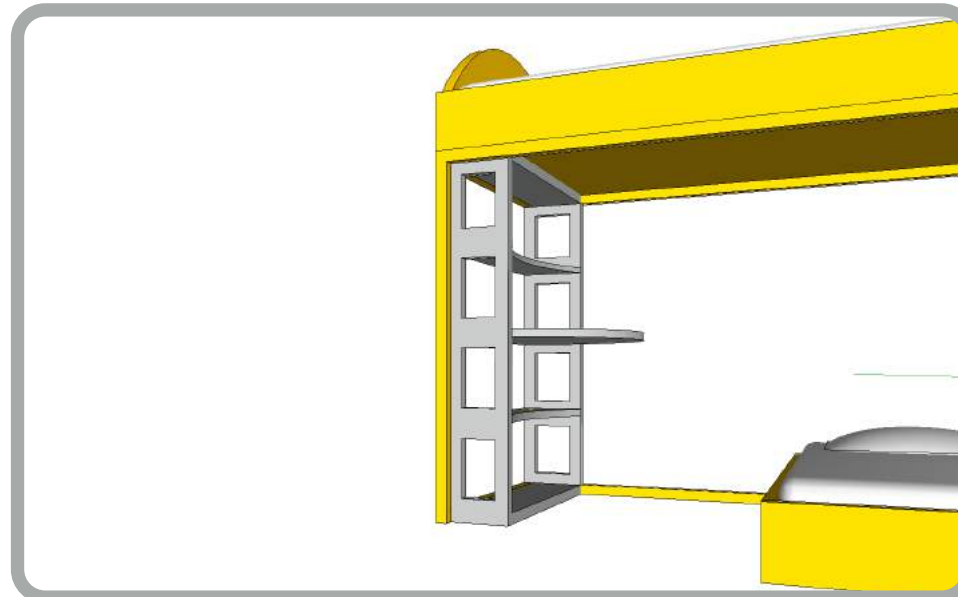
1 - DESK, 2 - SUPPORT FRAME, 3 - SMALL BED, 4 - LARGE BED, 5 - BED GUARDS, 6 - SHELVING & TUNNEL PANEL, 7 - STAIRS/DRAWERS, 8 - SLIDE, 9 - PULL-OUT SLIDE CUSHION, 10 - MINIONS PANEL



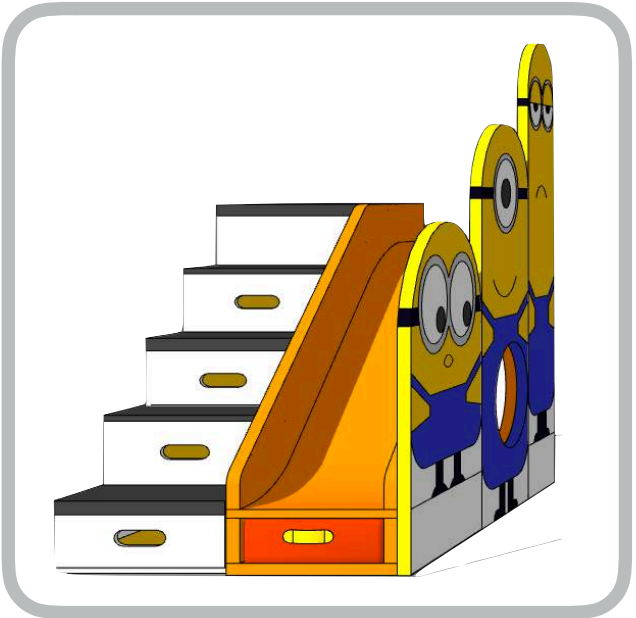
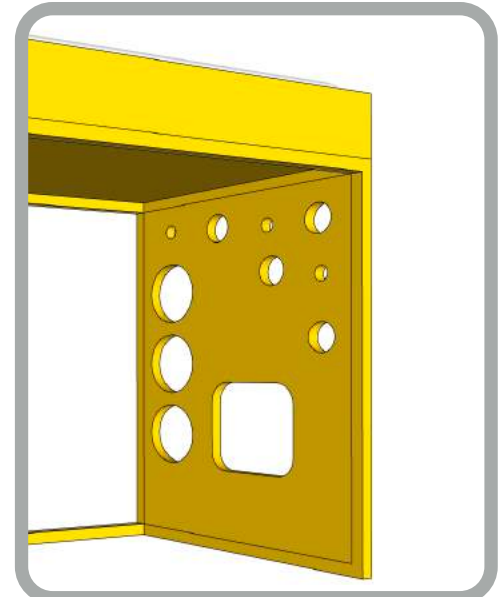
Example: Option 1B Assembling



DESK/SHELVES



BEDSIDE PANEL



FRONT FACING  
SLIDE & STAIRS



Group 2 - Integrated Wardrobe  
& Bookshelf



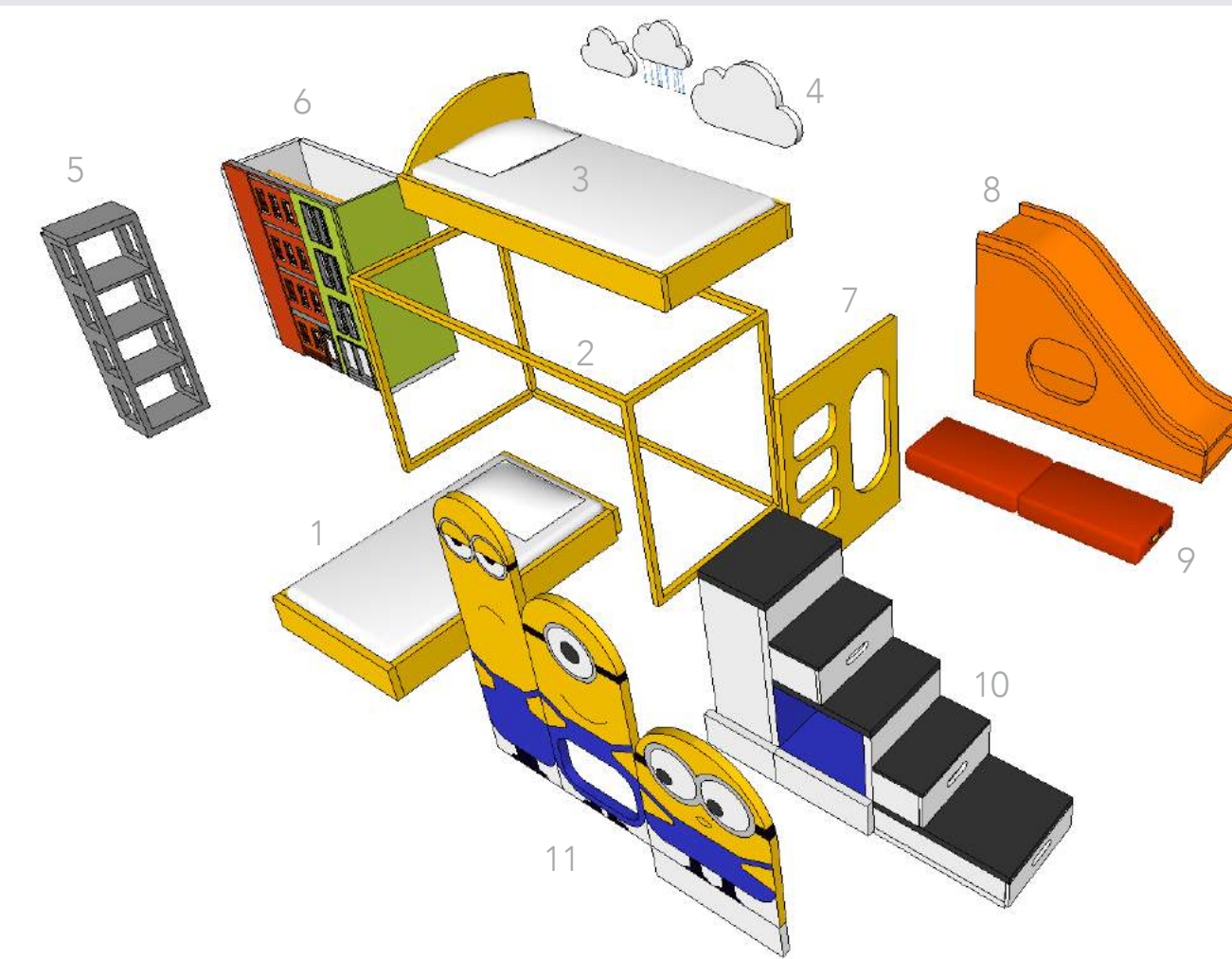
Option 2A:  
Integrated Wardrobe / Bookshelf  
Front Facing Minions



Option 2B:  
Integrated Wardrobe / Bookshelf  
Front Facing Stairs/Slide



Option 2A:  
Integrated Storage &  
Front Facing Minions



Integrated wardrobe and bookshelf add storage for clothing and display for books and toys. There are several ways to set a desk within the room and it can be doubled or extended across the wall to accommodate both children needs.

Main wardrobe position and size leave enough space for comfortable slide landing, eliminating danger of children hitting the wall or sharp furniture corners during play.

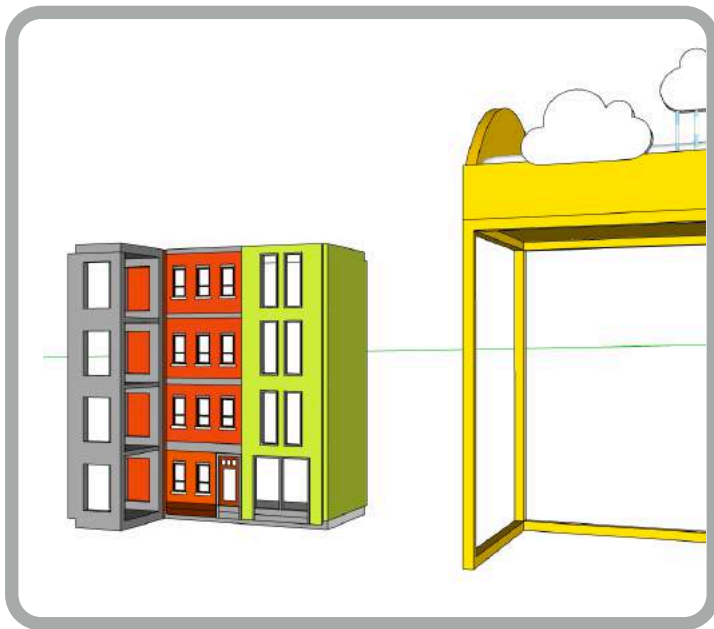


1 - SMALL BED, 2 - SUPPORT FRAME, 3 - LARGE BED, 4 - BED GUARDS, 5 - BOOKSHELVES, 6 - MINI WARDROBE, 7 - SLIDE & TUNNEL PANEL, 8 - SLIDE, 9 - PULL-OUT SLIDE CUSHION, 10 - STAIRS/DRAWERS, 11 - MINIONS PANEL

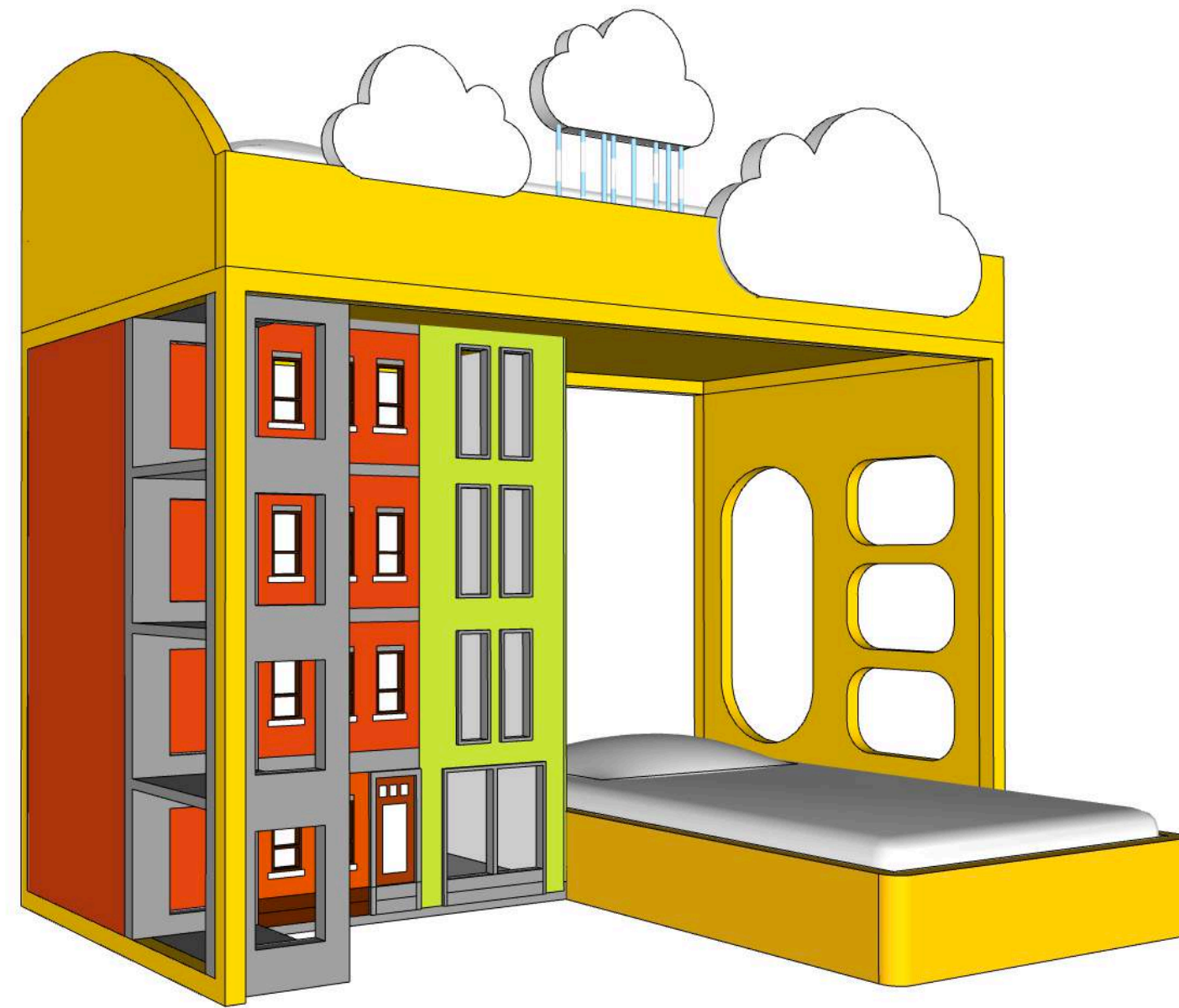
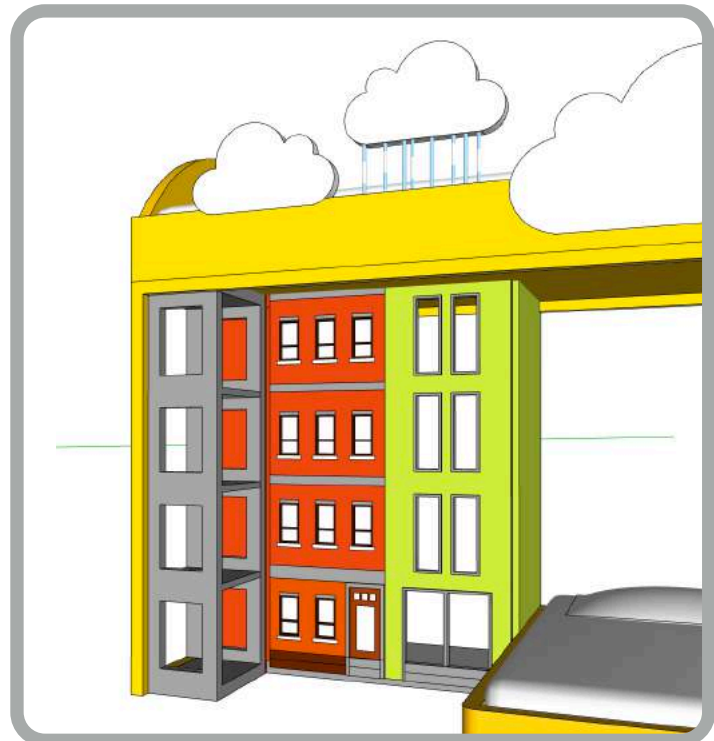




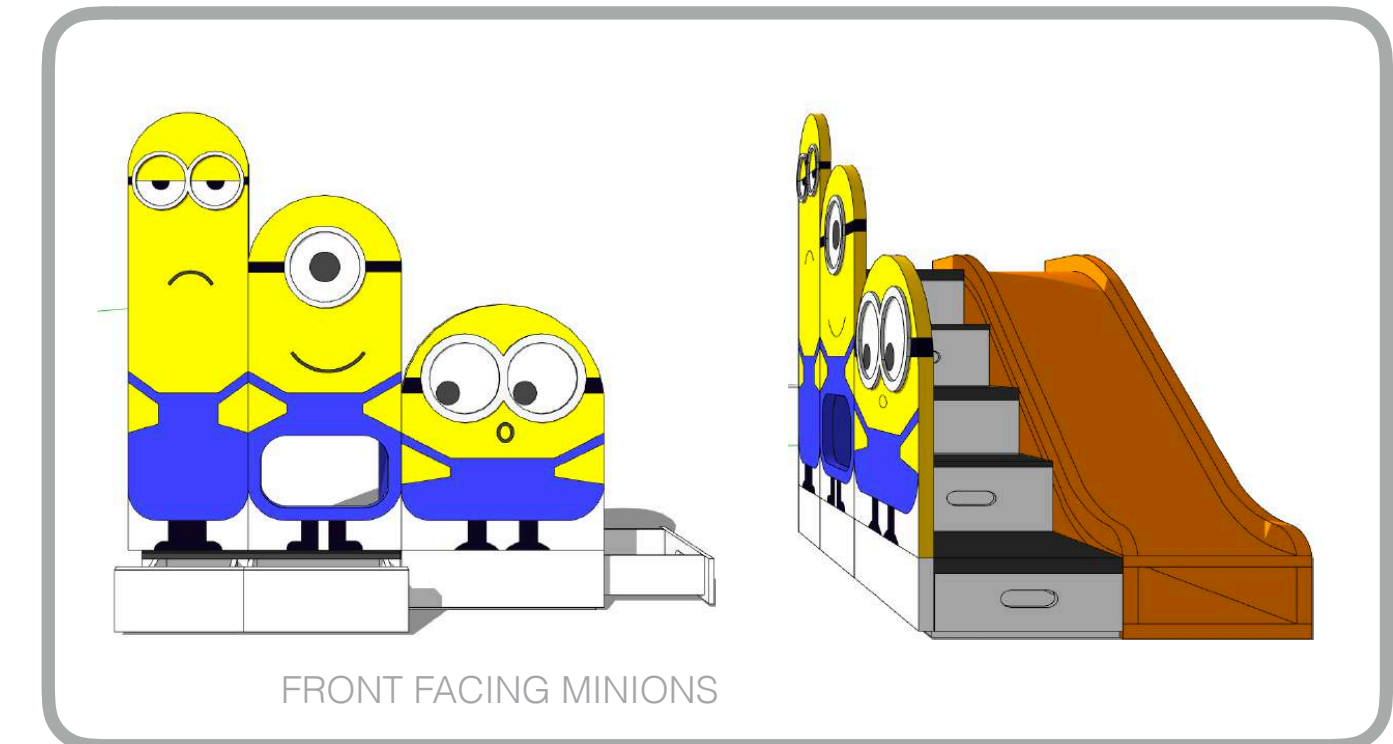
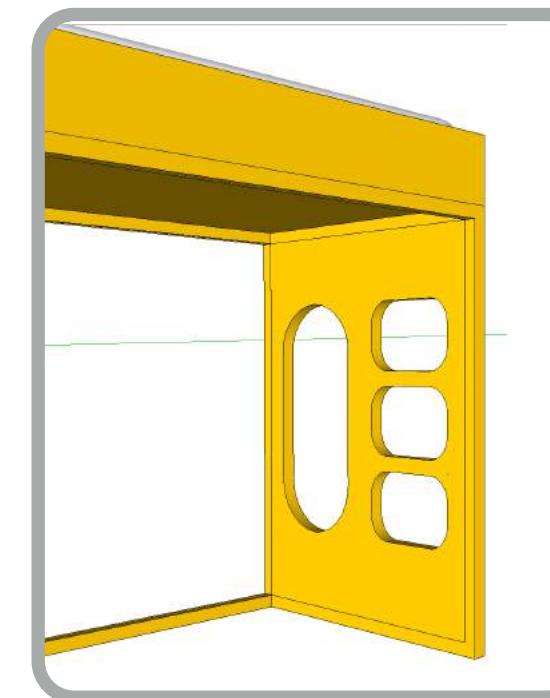
Example: Option 2A Assembly



WARDROBE & BOOKSHELF



BEDSIDE PANEL



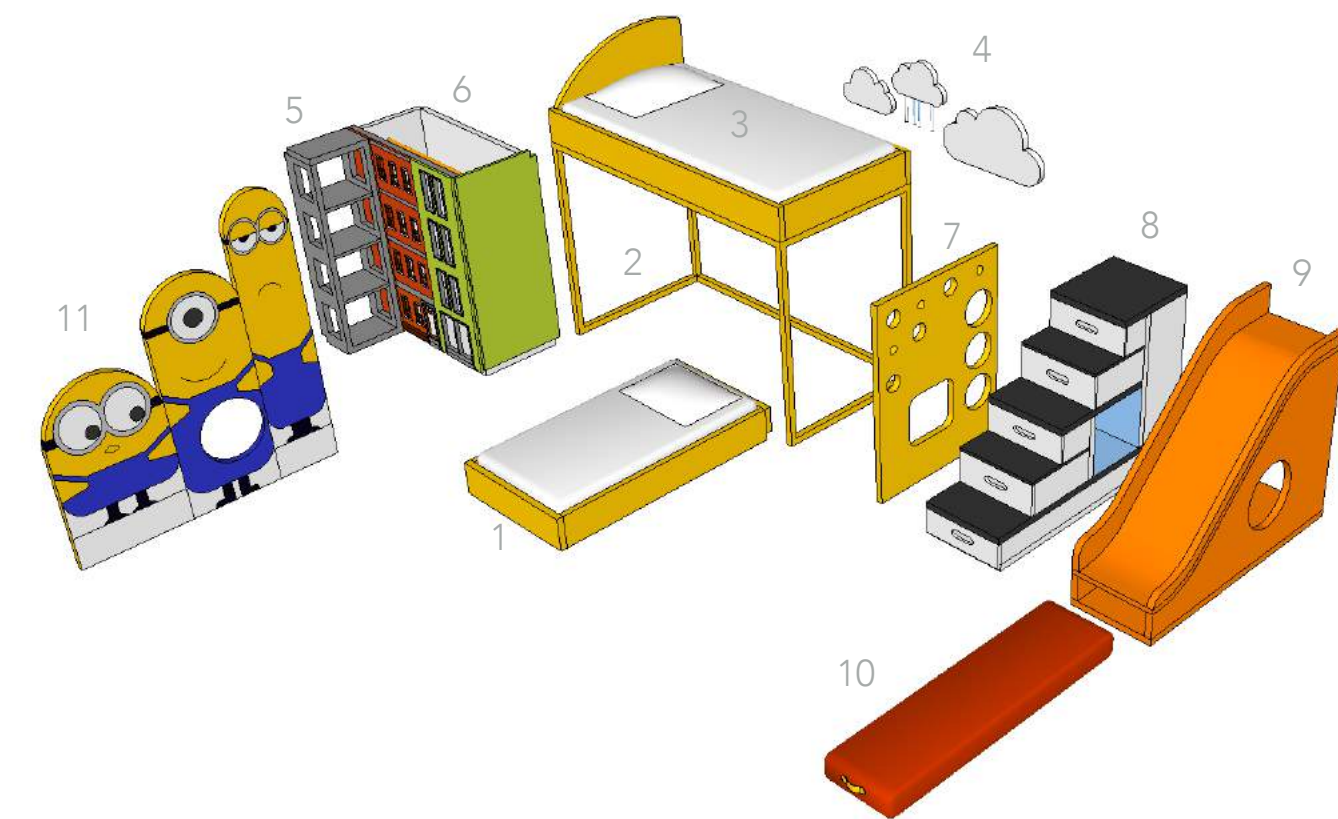
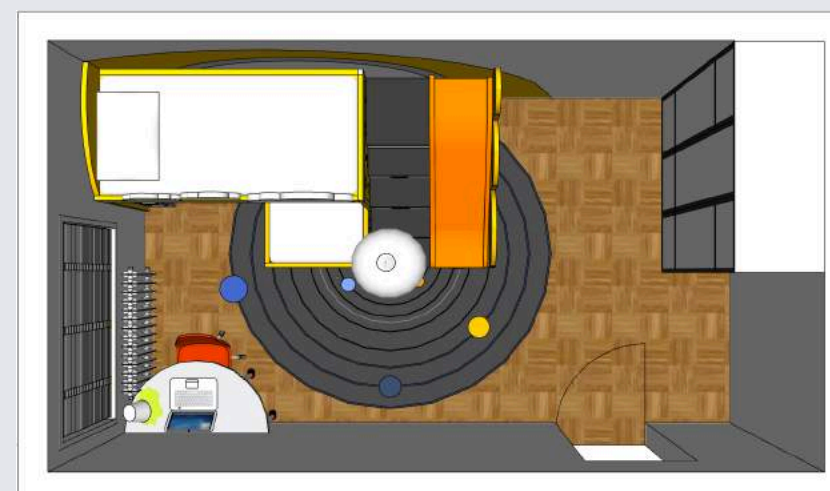
FRONT FACING MINIONS



Option 2B:  
Integrated Storage &  
Side Facing Minions Panel



Integrated wardrobe / bookshelf and front facing slide and stairs provide an opportunity for substantial storage in the rest of the room. Illustrations show main wardrobe occupying only half of available length and can be extended across the whole wall if storage needs are of primary importance.



- 1 - SMALL BED, 2 - SUPPORT FRAME, 3 - LARGE BED, 4 - BED GUARDS, 5 - BOOKSHELVES, 6 - MINI WARDROBE, 7 - SLIDE & TUNNEL PANEL, 8 - STAIRS/DRAWERS, 9 - SLIDE, 10 - PULL-OUT CUSHION, 11 - MINIONS PANEL



# Inside the Slide

