



ACME D3

From Studio to One Bedroom Split Level Apartment



Space planing for this apartment went through several stages, each becoming more daring. It all started with a long, narrow and dark studio flat for which we designed an un/folding bedroom. It was then discovered that hidden behind a false ceiling there exists a tall sloping roof, prompting our client to start thinking about mezzanine options. Overall height allowed for only an auxiliary mezzanine, which despite being useful in such a limited space, appeared more as an appendage than a part of it. In collaboration with their engineer, our client decided to lower the front half of the floor to gain extra height and this lead us to create a bright and airy multilevelled one bedroom apartment. Space is designed in such a way that each level retains its distinct function and helps create a natural flow of space.



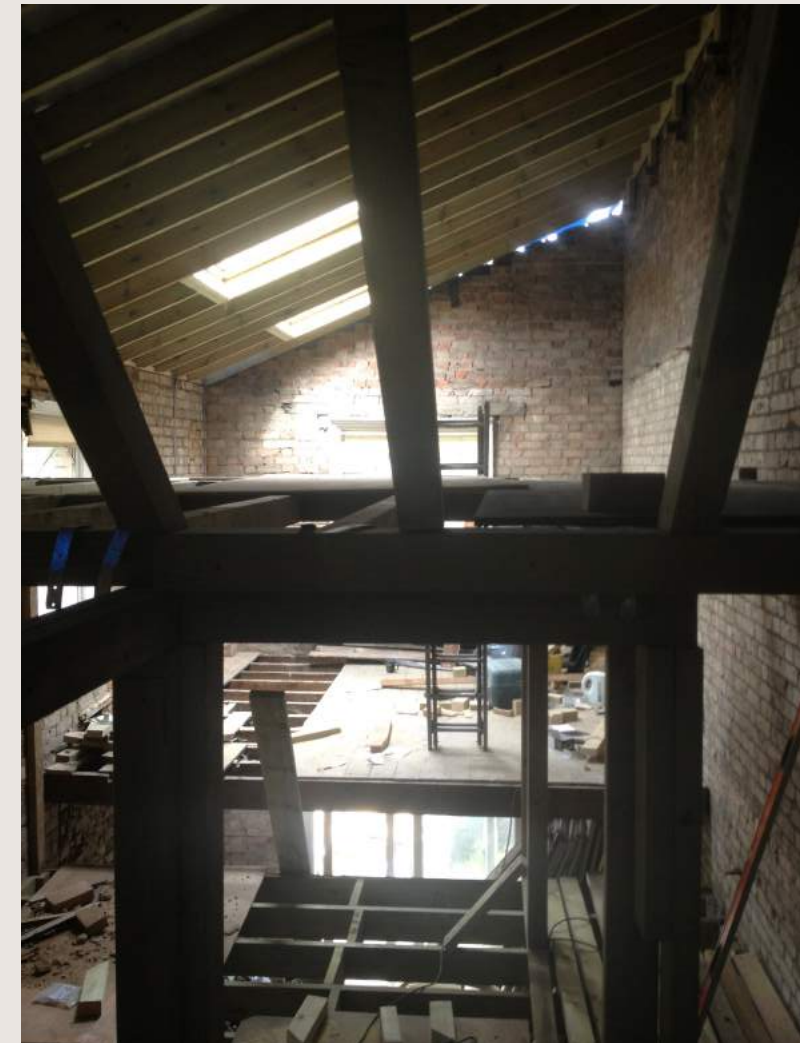
Studio Flat Brief

Studio flat, along with the rest of a converted Victorian house, is going through total strip renovation.

We went through several stages of spatial development with our client, residential property developer.

"During the first stages developed with you it became clear that, due to limited height, mezzanine could only serve as a secondary part of the apartment."

With our engineer we decided to lower one part of the floor, which should provide enough height for a more usable space. That still leaves us uncertain how to spatially arrange the apartment, so, to avoid the costly mistakes, we'd rather do it on paper with your help. Once the layout is established kitchen, bathroom and any custom / built-in furniture are going to be installed. Potential clients will be shown 3D furnished renders"



Studio Flat to One Bedroom Split Level Apartment



By lowering part of the floor, the space split into three distinct levels as shown on longitudinal section above. From 33 sqm, square footage increased to almost 50 sqm (49.70 to be precise) which transformed a tunnel like dark studio flat into a multilevelled, airy and bright one-bedroom apartment.

There are two space plans or layout options and both work well.

Option 1 proved to be more suitable to our clients for having a separate bedroom.

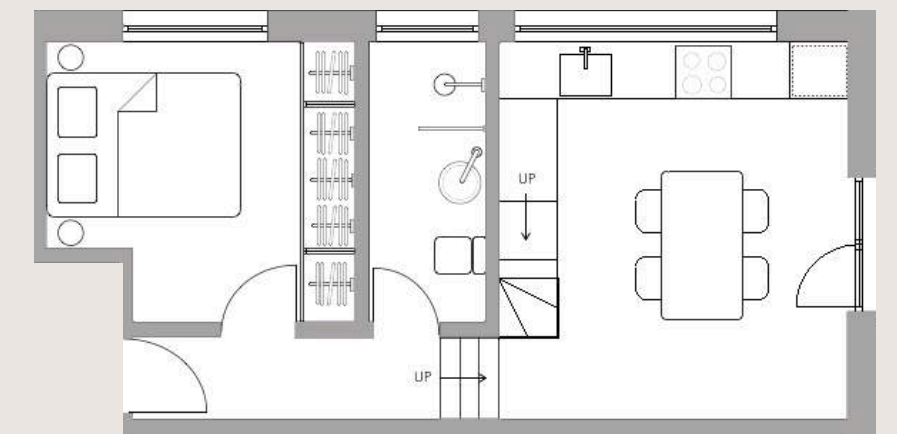
In this option the **entry level** contains a double bedroom and toilet/shower room.

Generously proportioned hallway leads to **second level** dedicated to food. Single line kitchen uses all the available height for storage and instead of splash back has a frosted glass window - this brings additional light and protects privacy. Juliette balcony doors are paired with an additional window above to compliment the form of space and bring in natural light. Generous dining table takes the centre stage.

Mezzanine level is reached by steps which initially start as a low storage platform.

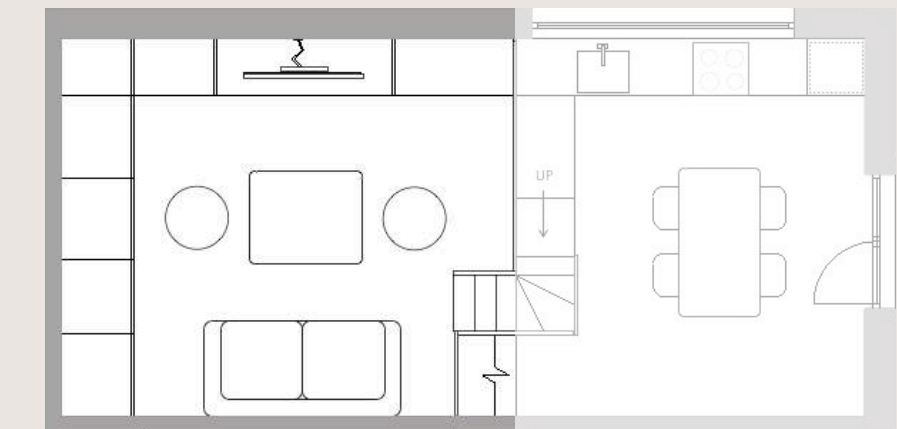
Lowest part of the third level is used for a custom media cabinet and sloping elevation contains substantial storage and front bench to extend the seating area. Triple roof window brings light to the least naturally illuminated area and provides more headroom.

LAYOUT OPTION 1



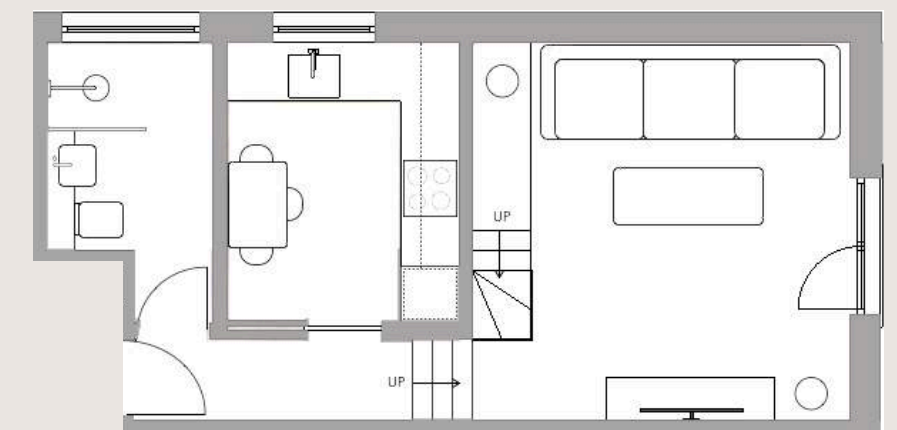
LEVEL 1: BEDROOM & BATHROOM

LEVEL 2: COOKING/DINING



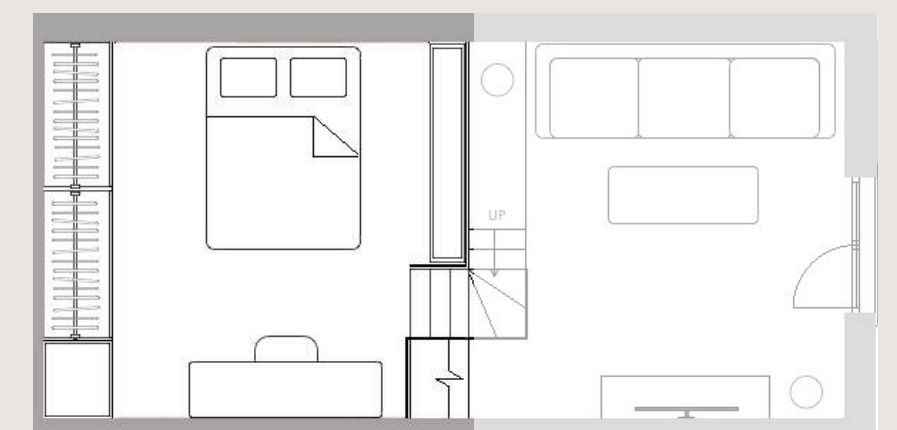
LEVEL 3: MEZZANINE LIVING ROOM

LAYOUT OPTION 2

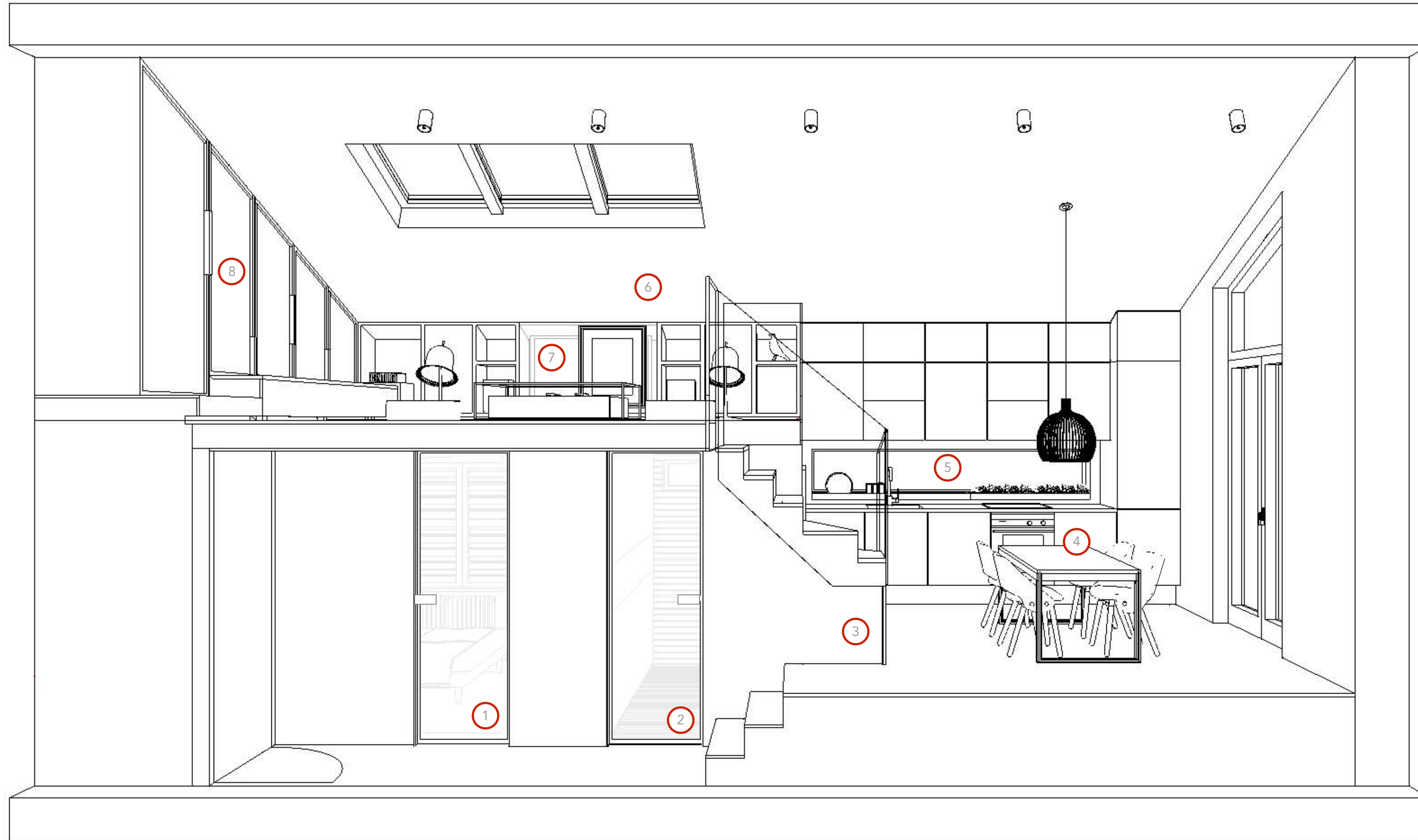


LEVEL 1: BATHROOM & KITCHEN

LEVEL 2: LIVING ROOM



LEVEL 3: MEZZANINE BEDROOM



Longitudinal Section

- 1 - BEDROOM
- 2 - BATHROOM
- 3 - UNDER STAIRS STORAGE
- 4 - KITCHEN & DINING
- 5 - FROSTED WINDOW
- 6 - MEZZANINE LIVING ROOM
- 7 - TV ON STRETCH BRACKET BEHIND SLIDING SCREEN
- 8 - STORAGE





Option A
Straight Corner Stairs
With Storage



Option B
Curved Stairs
With Storage





How to Deal with Tall Walls & High Ceilings

High ceilings are in most cases a desirable feature in any space but actually require quite a thoughtful approach not to make a room appear stark or even oppressive.

There are many different ways of addressing a tall wall problem:

Art - hang a large statement piece in the centre of the wall or create a gallery wall - this draws the eyes up visually balancing the room

Statement Lighting - appropriate style and scale light fixture hung from a tall ceiling creates a visual connection

Statement Feature - this can range from paint, wall paper to various materials cladding; however one of the best and most useful ways is to have a custom built shelving.



How to Deal with Tall Walls & High Ceilings

To address the issue of tall and empty walls, which can make the space appear stark and austere, the soaring shelving unit is quite an extravagant design statement that adds an air of understated luxury.





Mezzanine Living Room

Low ceiling and sharp angles are counterbalanced with soft shaped furniture and fittings like low sofa, round floor cushions and bell shaped Lolita Lamps. Sloping elevation contains deep storage space and a front bench to extend the seating capacity.



Mezzanine Living Room

Lowest mezzanine wall is used for a simple fitted cabinet with open and enclosed shelving. TV with extendable wall mount is hidden behind semi transparent sliding screen.



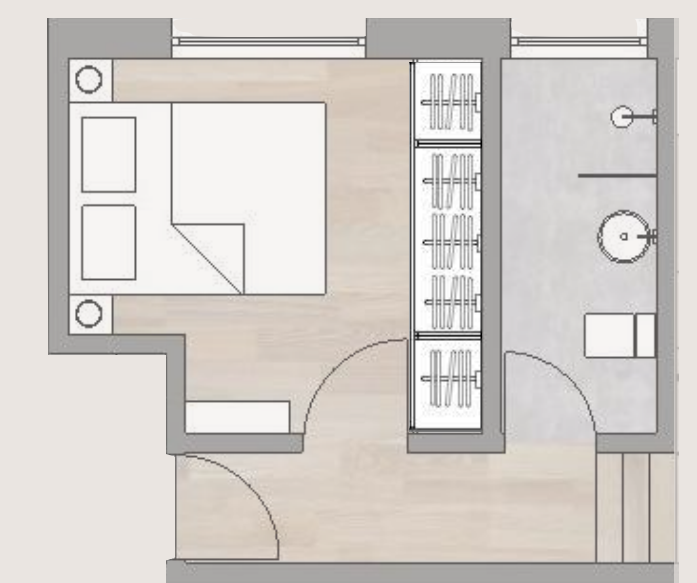
Small Bedroom Design

When faced with space limits in bedrooms, the starting point should always be the bed itself, or rather its position and users.

Our needs do vary and some people prefer the seeming protection of the solid wall, however it is wise to leave the space on each side of the bed when possible, especially if used by more than one person.

In this particular case the most natural position for the bed (not facing the door, clear view around the room and through the window, away from radiator,...) dictated the wardrobe depth. Instead of the usual 600mm, wardrobe is reduced to 470mm, so the hangers are front facing and shelves are of perfect depth.

This way the movement around the room is free flowing. Translucent glass doors visually widen the room.





Small Bedroom Design

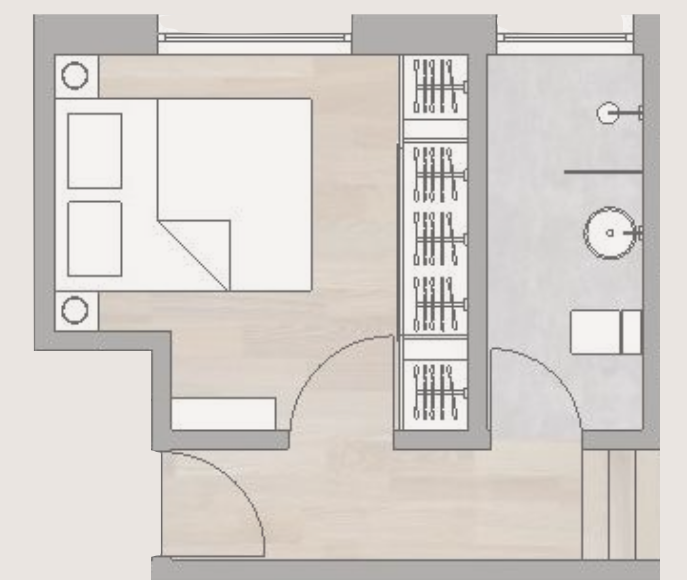
Small bedrooms with low ceilings always present a design challenge. To counterbalance the lack of height low set bed is always a good solution along with a ceiling light fixture if central illumination is needed.

Hanging bedside lamps contribute to visual perception of height.

Mirror covered entry door has multiple functions:

- it reflects the window and brightens the room
- it visually enlarges the space
- it is great for checking outfits

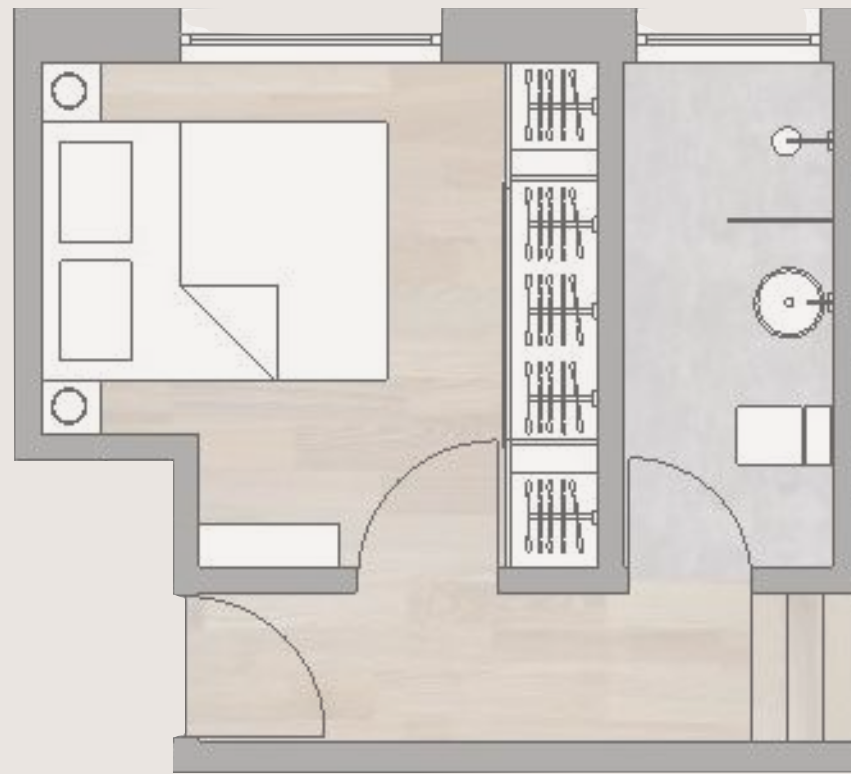
Walls are adorned with art and a floor to ceiling bookshelf (which creates an additional 'function') creating space that appears luxurious despite its limited size.



Small Bathroom Design

Space carved out for the bathroom is long and narrow. Although not always the case, occasionally it is wise not to challenge the given shape but accentuate it.

All the bathroom fixtures are placed along one wall to create a clear passage. Floor and shower wall are clad in wood adding warmth, along with the strip of tiles, to an otherwise stark bathroom.

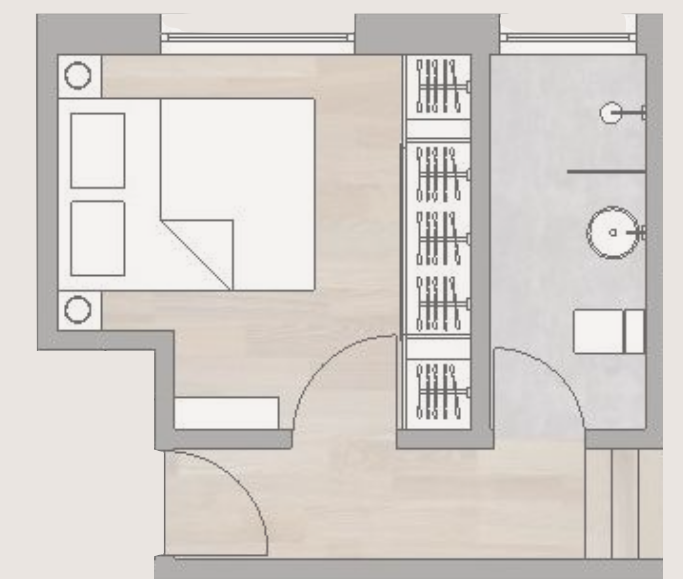




Small Bathroom Design

Tiny bathrooms benefit from sculptural fixtures like a cylinder shaped wash basin and toilet.

In low ceiling bathrooms ceiling height mirrored cabinets provide necessary storage, reflect ceiling lights and (in this case) visually double the narrow window, making the space appear wider and brighter.





Small Bathroom Design

Pale wood cladding, strip of geometric tiles and black fittings on a cement/concrete background create a harmonious and soothing space, great for a relaxing start or end of the day.

