

ACME D3

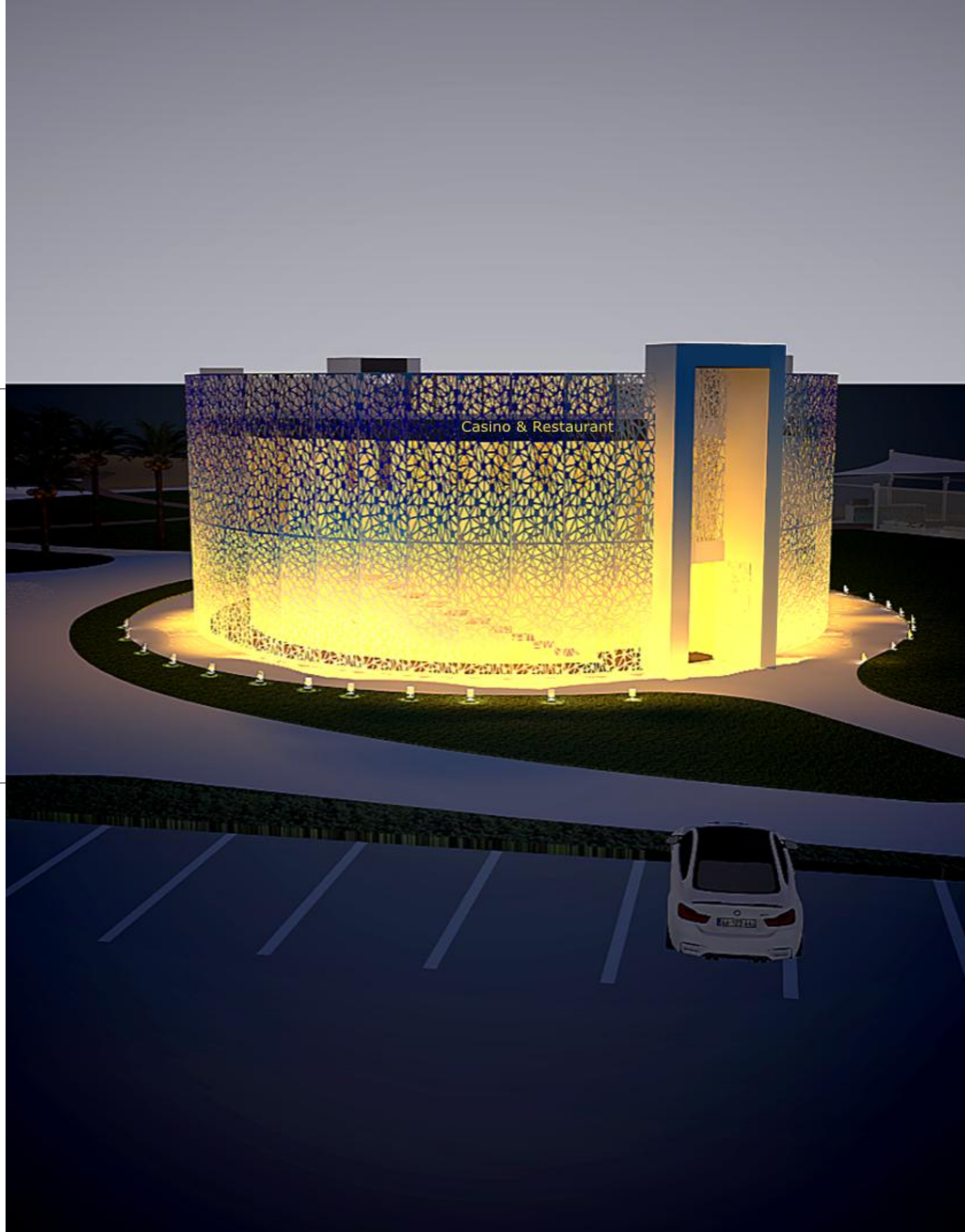
## Casino Design Concept

The Lantern is a working title for a new casino and restaurant building. Situated on the beach plot it appears at night as an intricate lighting beacon, attracting attention from both land and sea. During the day its delicate facade glows in the sunlight.

Despite its independence from the Chelsea Plaza, it fits well with existing buildings as it nestles into a new landscape carved out of already present pathways.

Double layered Lantern building is formed out of protective and solid inner circle, 18 meters in diameter, enveloped by additional layer reserved for circulation, services and utilities.

The cladding is constructed out of perforated steel which serves as a protective sun-shading layer. It also gives a character to the building as it affects appearance of both exterior and interior depending on the source of light. By changing the colour of architectural lighting the Lantern changes its appearance and character.





## Casino Design Concept

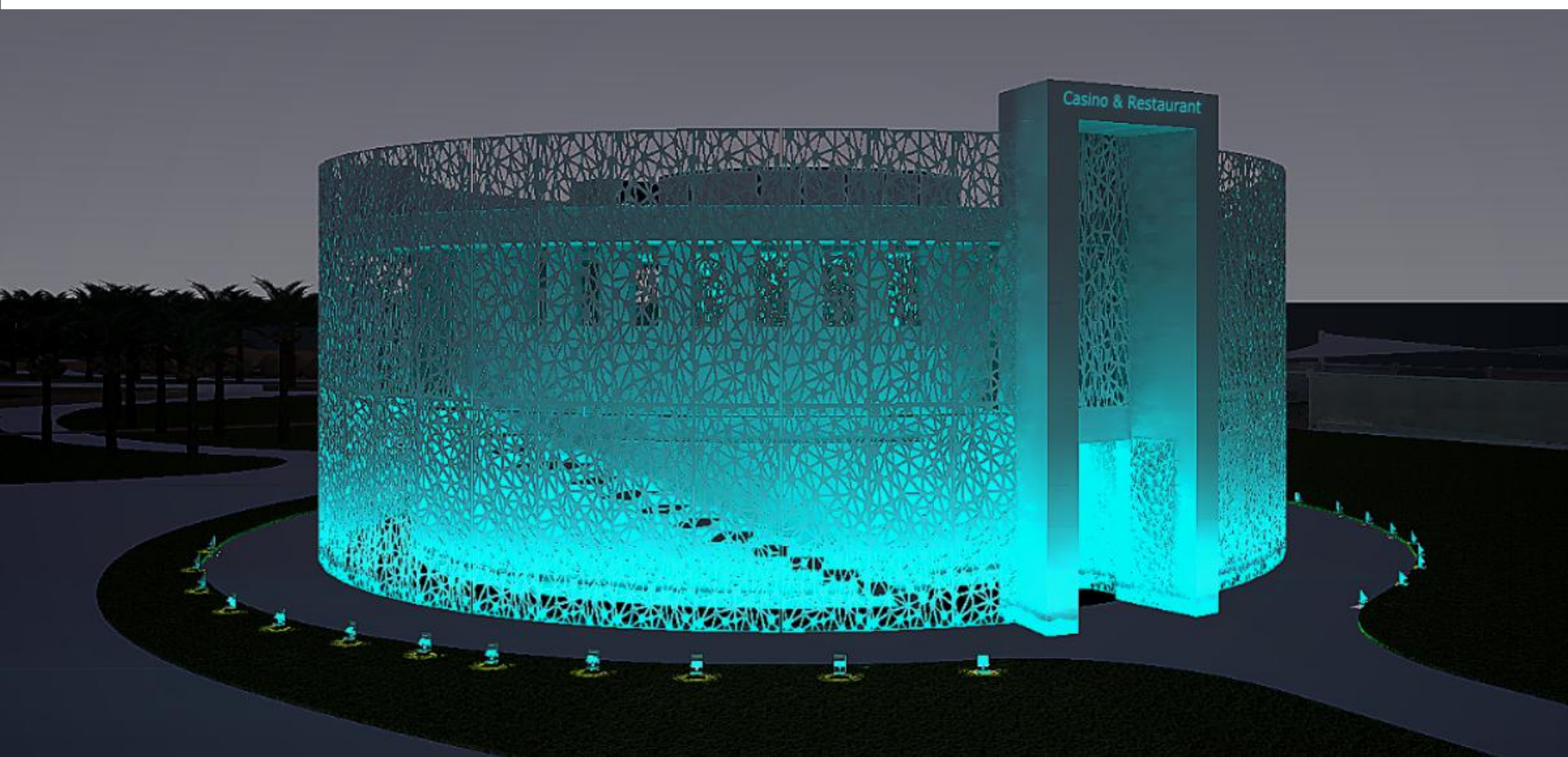
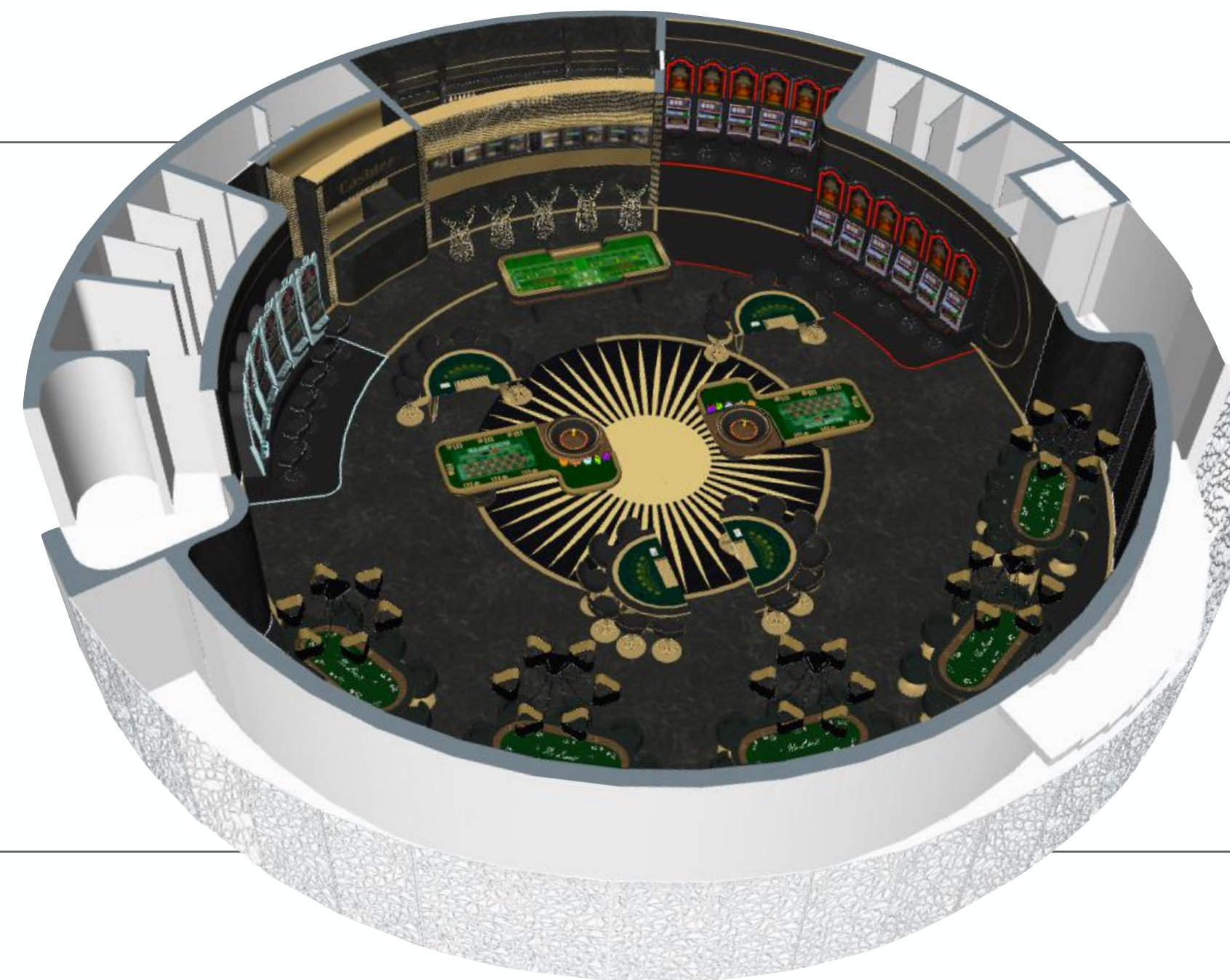
For many decades casino proprietors and designers were led by the idea that casino spaces should be designed to entrap visitors in a confusing and visually exhausting low ceiling maze void of any natural light, clocks, where they would get lost and essentially be forced to spend more time and money.

In recent years this idea was turned upside down as psychological research shows that casino spaces which make visitors feel safe, protected and comfortable in a luxurious and easy to navigate environment proved to be financially most viable.

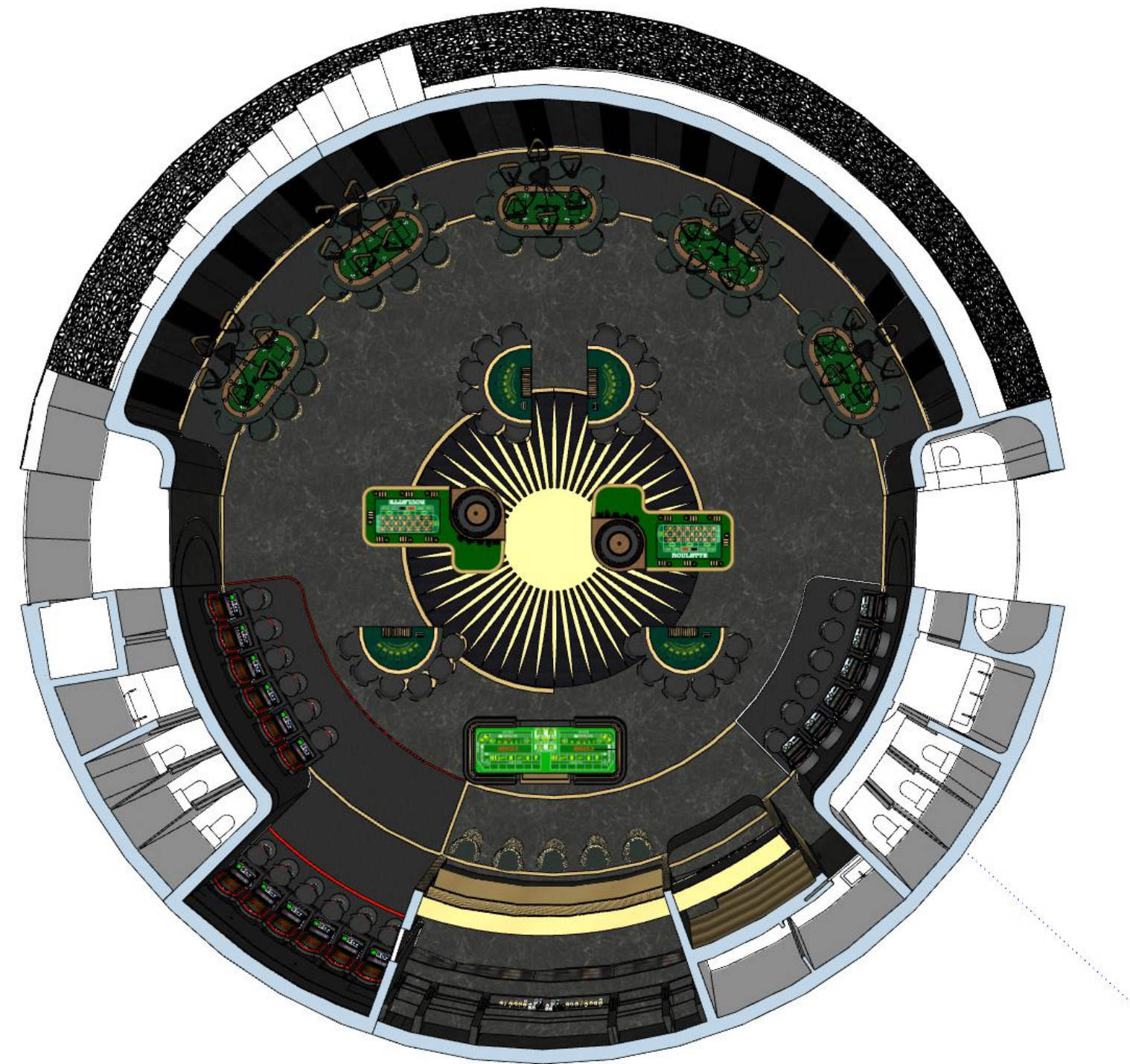
Essentially, casino should be designed as a thrilling and inviting adult 'playground' which is intuitive and easy to navigate, providing an emotional context clients would enjoy and wish to repeat.

In this particular case the round shape of the building created a casino space which contains 360 degrees of pleasure, luxury, intimacy and protectiveness. Placed at the ground level and entered on two opposing sides it gives visitors immediate oversight of facilities. Centrally spaced circular atrium has a number of important roles:

- it provides natural light and ventilation which helps with energy efficiency and reduction of the costs usually involved in running these energy guzzlers
- it transforms the space from what would be a wide span and low ceiling nightmare into an airy, spacious and luxurious arena



# Casino Design Concept



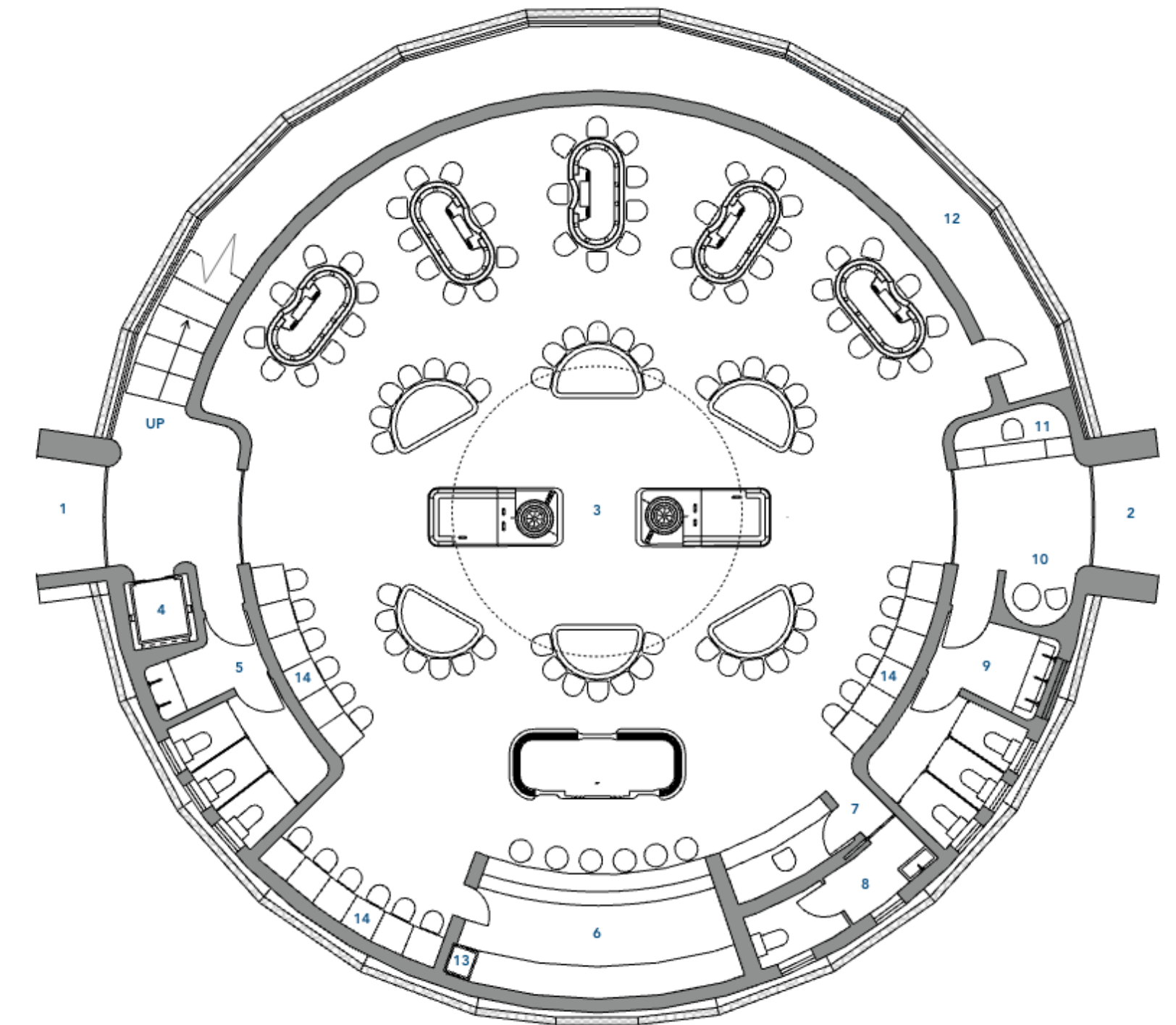
Although the layout of the casino is presented as open plan with small fixed clusters of games machines, it can be arranged in multiple ways. For example poker tables area can have folding partitioning walls or curtains that would create separation from the rest of the space and provide privacy for players or the central focus of the room can be changed from Roulette table to any other which operators would like to accentuate.

The adaptability of the space creates a venue that can change functions as needed. In any case arrangement of the layout will depend on the operators' and security needs and requirements.

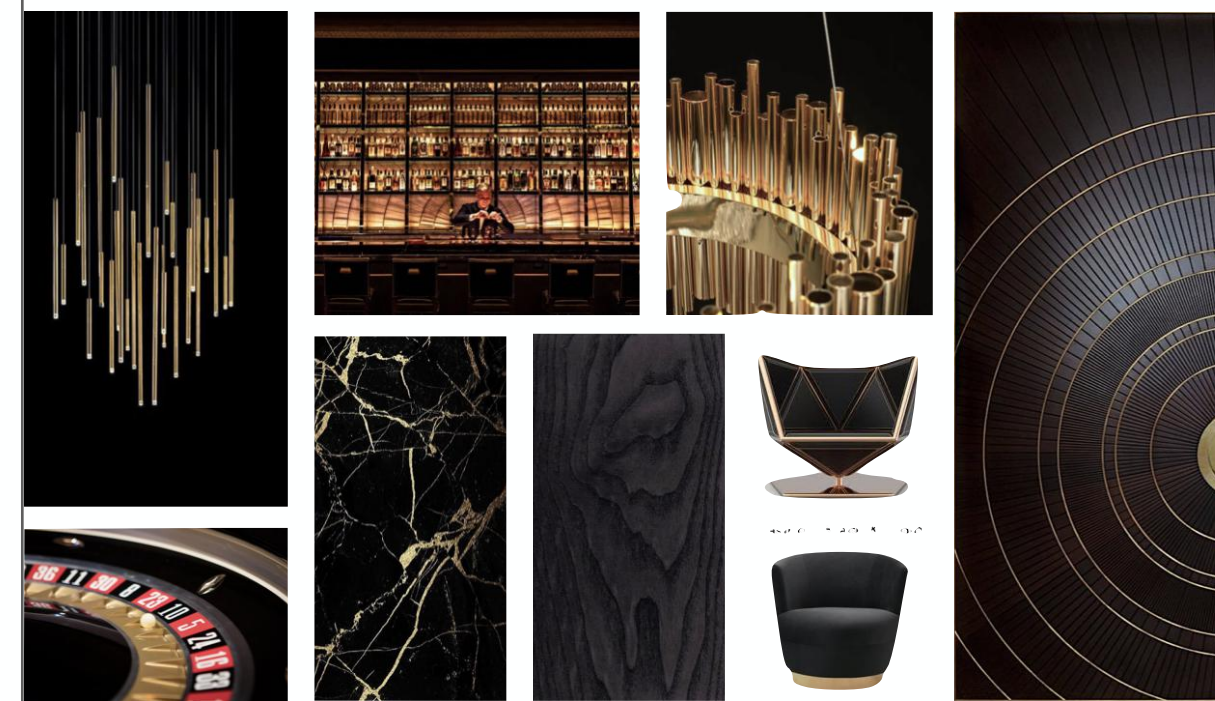
The look:

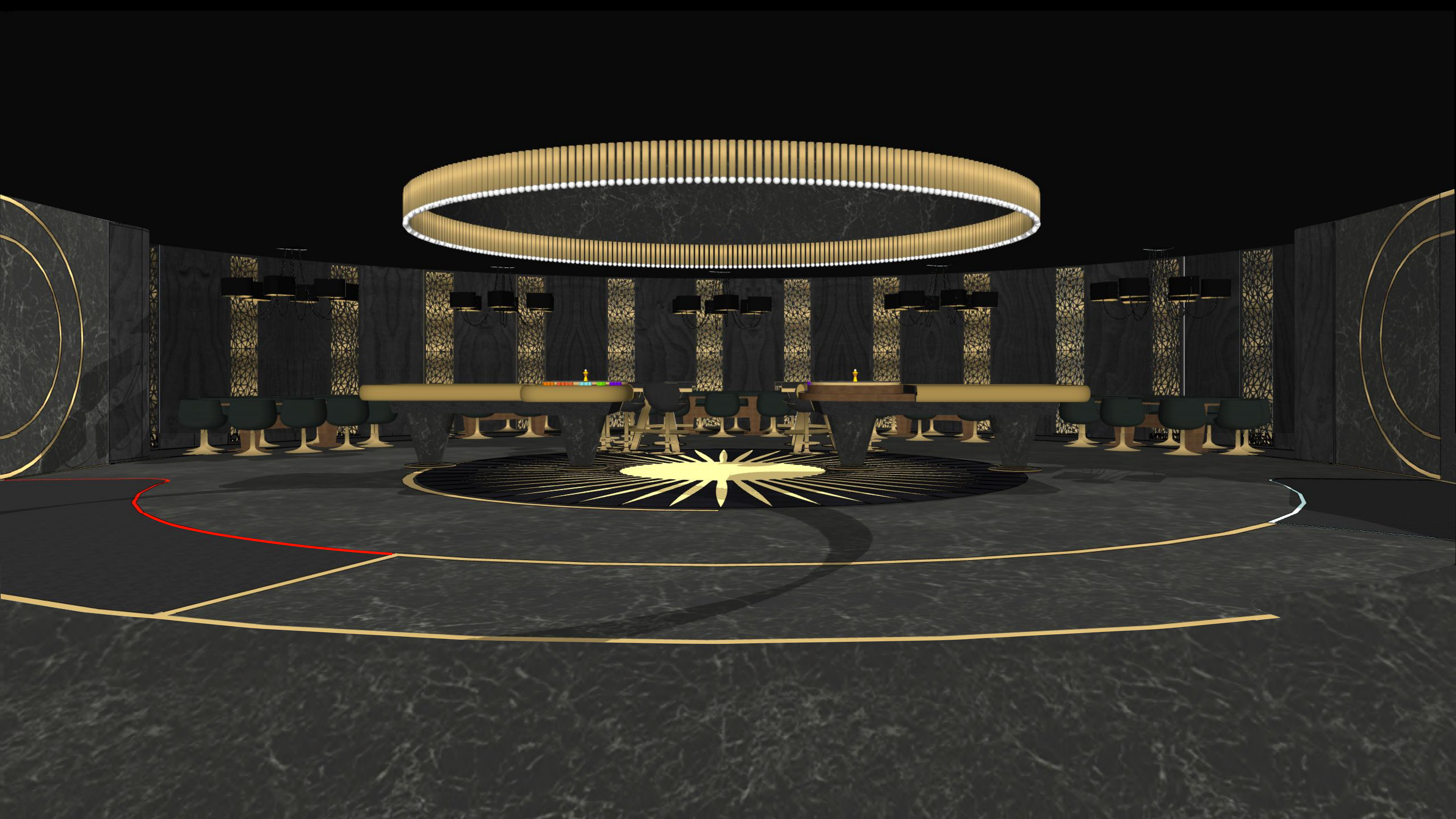
Black and gold is a combination that goes back to the times of ancient Egyptian pharaohs and Roman emperors. It is a striking contrast that elevates opulence and splendour of the setting while restraining them at the same time.

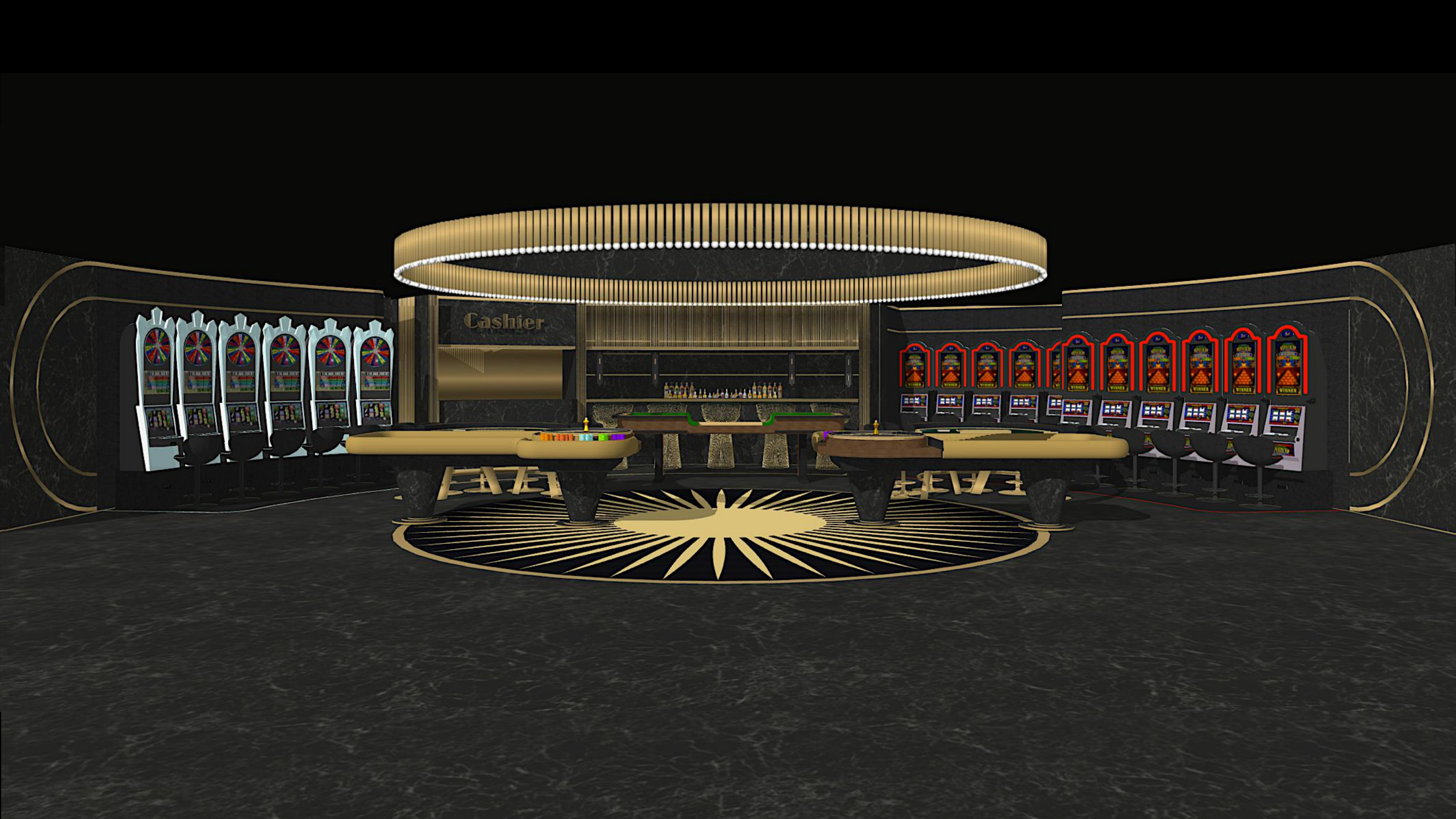
In the casino setting it provides the sensation of a luxurious, intimate and sheltered cave which is simultaneously relaxing and exciting.



- 1 - CASINO & RESTAURANT ENTRANCE
- 2 - CASINO ENTRANCE
- 3 - CASINO
- 4 - LIFT
- 5 - M TOILETS
- 6 - BAR
- 7 - CASHIER
- 8 - STAFF TOILETS
- 9 - F TOILETS
- 10 - SECURITY
- 11 - RECEPTION DESK
- 12 - SECURITY OFFICES, SERVICES, HVAC
- 13 - FOOD LIFT / DUMBWAITER
- 14 - SLOT MACHINES

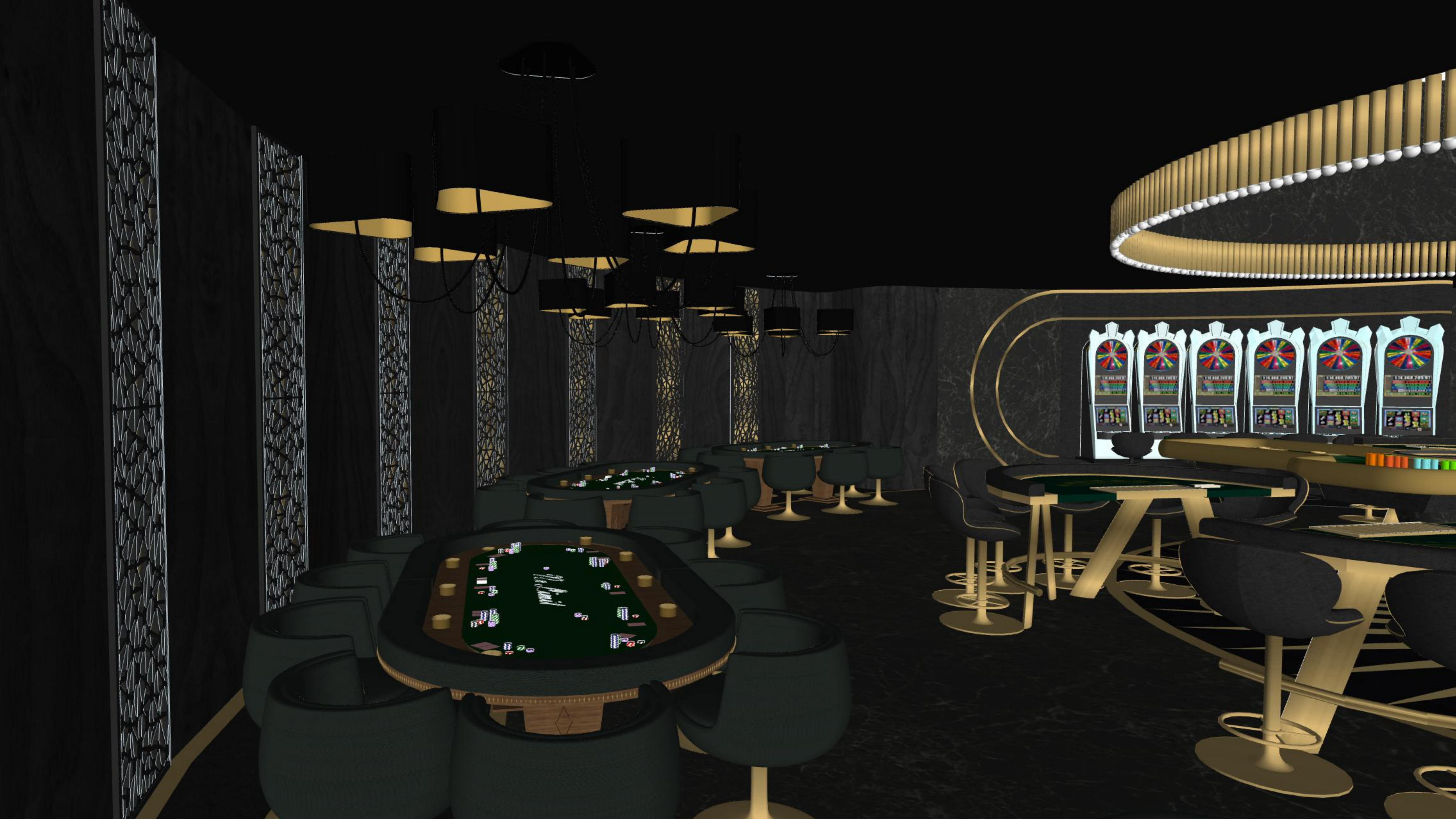






Cashier





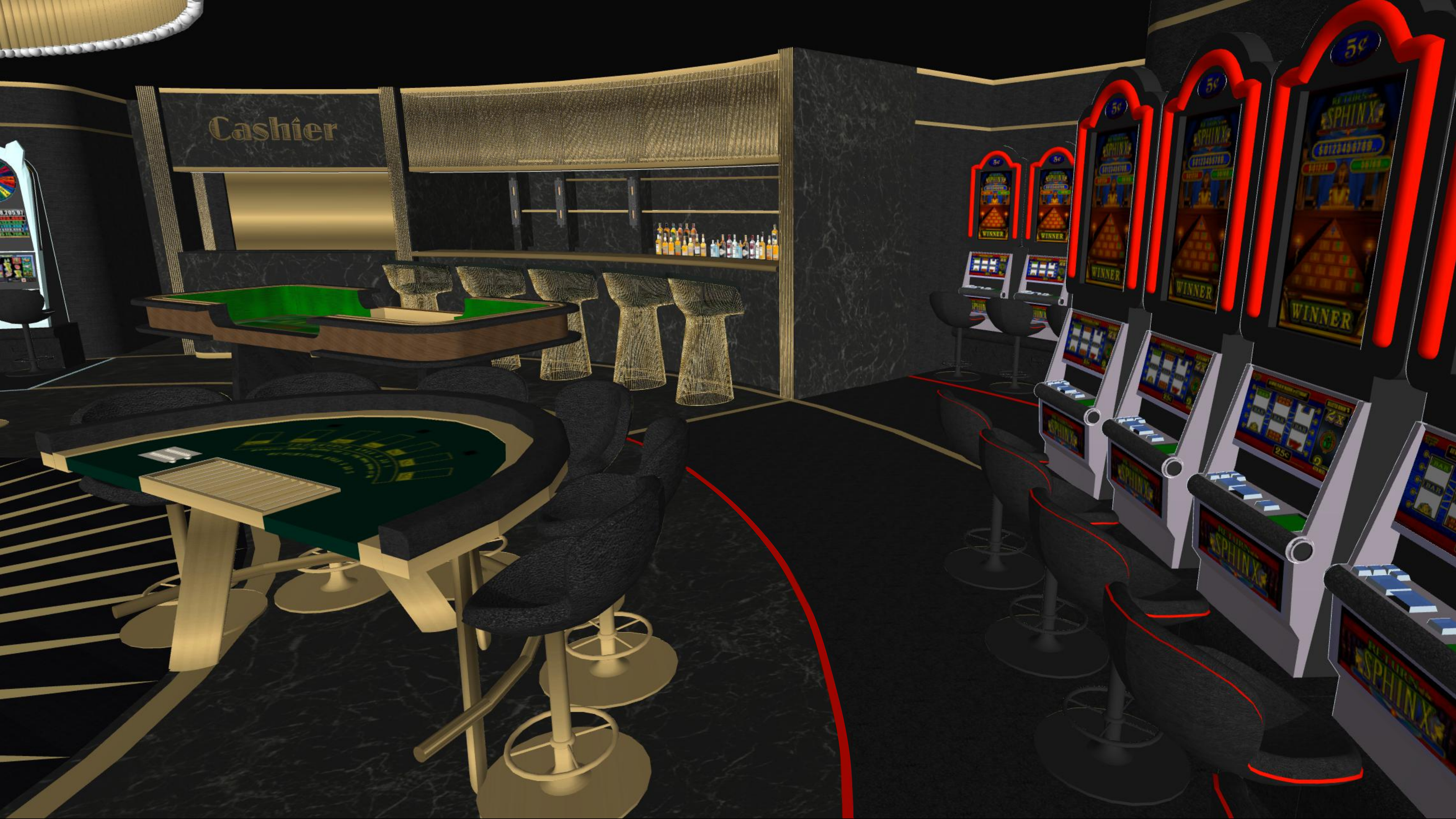


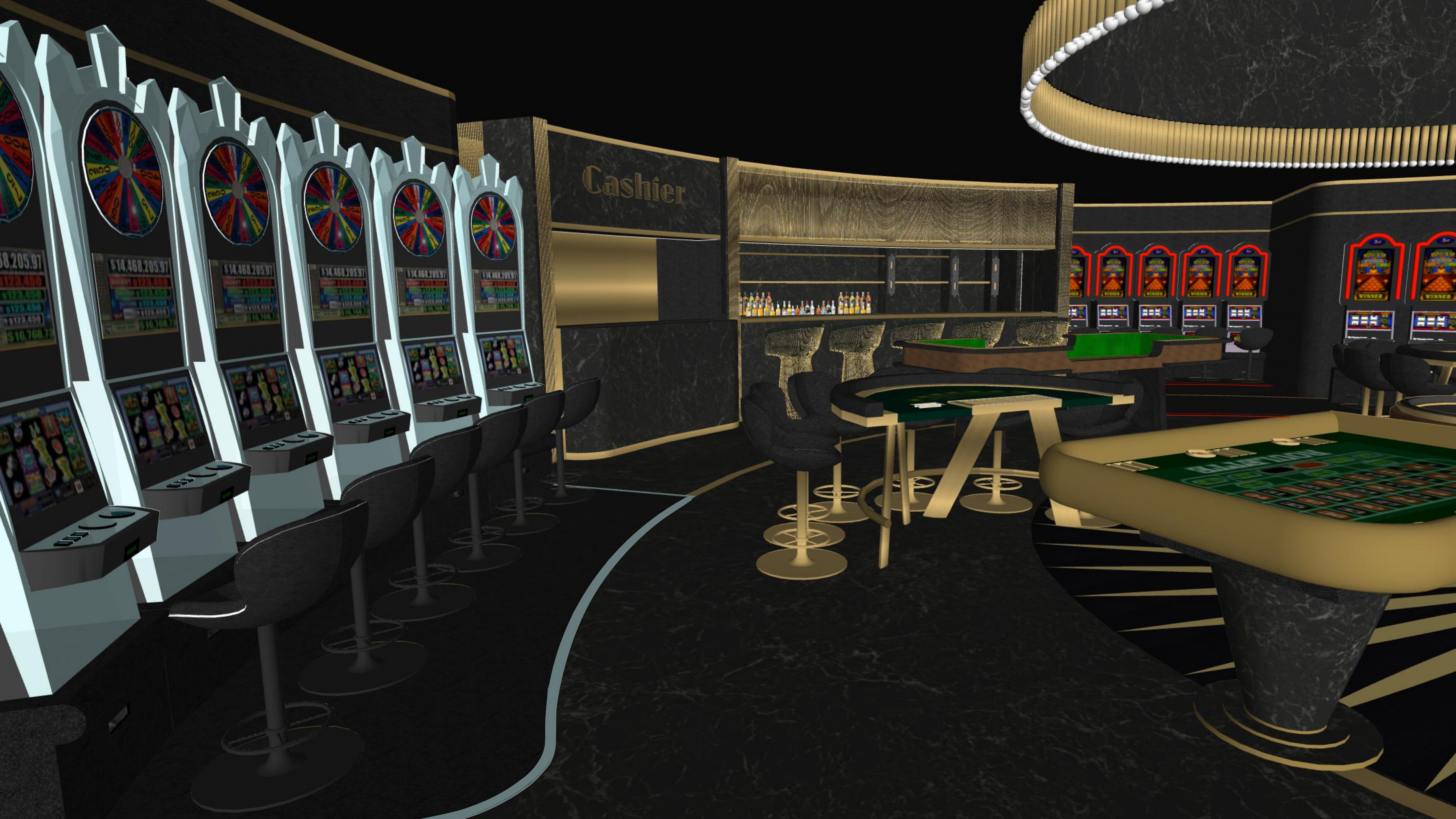
Cashier





Cashier





Cashier